



San Joaquin

Joint Powers Authority

September 25, 2020 Board Meeting



San Joaquin Joint Powers Authority

Item 1

Call to Order

Pledge of Allegiance

Roll Call



Tips and Rules for Teleconferencing



Item 2

Consent Calendar

- 2.1 Approve Minutes from May 29, 2020 Board Meeting
- 2.2 Next Board Meeting Location
- 2.3 SJPA Operating Expense Report
- 2.4 Administrative Items



Item 3

Public Comments

Please use the GoToMeeting chat function to alert staff if you wish to make a Public Comment.

Alternatively, you may write in your public comment to publiccommentssjpa@sjpa.com. Public comments should be limited to two minutes and no more than 240 words.



San Joaquin Joint Powers Authority

Item 4

Approve a Resolution of the Governing Board of the San Joaquin Joint Powers Authority Authorizing the Chair to Execute an Amendment to the 2020 San Joaquins Intercity Passenger Rail Service Operating Agreement with Amtrak to:

- a) Revise the 2020 Appendix D Annual Payment to \$40,139,950**
- b) Revise the Continuation Clause to Eliminate the 3% Escalation Component**
- c) Adopt 2021 Restricted Service Levels Related to COVID-19**
- d) Adopt 2021 Appendix D Annual Payment of \$43,469,946**

Stacey Mortensen

Approve Operating Agreement with Amtrak

- The FY 2020 Operating Agreement with Amtrak for the San Joaquins Intercity Rail Service was approved by the Board for 7 Daily Round Trips and associated Thruway Bus Service.
- Appendix D (Annual Payment) of the 2020 Operating Agreement was approved for an amount not-to-exceed \$51,374,352.
- In March, the broad impacts of COVID 19 significantly reduced passenger rail ridership, particularly related to the various shelter-in-place mandates.

Approve Operating Agreement with Amtrak

- In the Approval of the Federal CARES Act in March to provide relief funding to Amtrak, the expenses for State Supported Routes were capped at 80% of the FY2019 expenditure levels.
- To reconcile the fiscal year, the Appendix D needs to be revised to reflect an amount of \$40,139,950.
- In light of the likely uncertainty in FY2021 for the rebound of passenger rail ridership and the return to normal for many sectors of society, SJJPA and Amtrak staff agree that amending the FY20 Operating Agreement is the most efficient way forward.

Approve Operating Agreement with Amtrak



- The Amendment primarily relates to eliminating the 3% automatic price escalation associated with the Continuation Clause, revising the Service Description to reflect the decreased level of train and bus service and establishing a new annual payment amount.
- Counsel and staff are reviewing the Operating Agreement and Amendment for any other administrative changes that may be necessary, but none are anticipated to have any material impact on the scope of the Agreement.

Approve Operating Agreement with Amtrak

Fiscal Impact:

- State funding for the FY 2021 Operating Agreement is available through a combination of carryover funds from FY 2020 and State funding through the approved SJJPA Business Plan.

Approve Operating Agreement with Amtrak

Recommendation:

- Approve a Resolution of the Governing Board of the San Joaquin Joint Powers Authority Authorizing the Chair to Execute an Amendment to the 2020 San Joaquins Intercity Passenger Rail Service Operating Agreement with Amtrak to:
 - a. Revise the 2020 Schedule D Annual Payment to \$40,139,950
 - b. Revise the Continuation Clause to Eliminate the 3% Escalation Component
 - c. Adopt 2021 Restricted Service Levels Related to COVID-19
 - d. Adopt 2021 Appendix D Annual Payment of \$43,469,946



San Joaquin Joint Powers Authority

Item 5

Approve a Resolution of the Governing Board of the San Joaquin Joint Powers Authority Approving Amendment 01 to Agreement 19-J-03-25-0-00 with AECOM to Increase the Total Compensation Amount by \$50,000 for the Completion of Project Development Consulting Services for Madera Station Relocation Project, Revised Total Contract Amount Not-To-Exceed \$416,000 and Authorizing the Executive Director to Execute Any and All Documents Related to the Project

Dan Leavitt

Madera Station Relocation Amendment 01

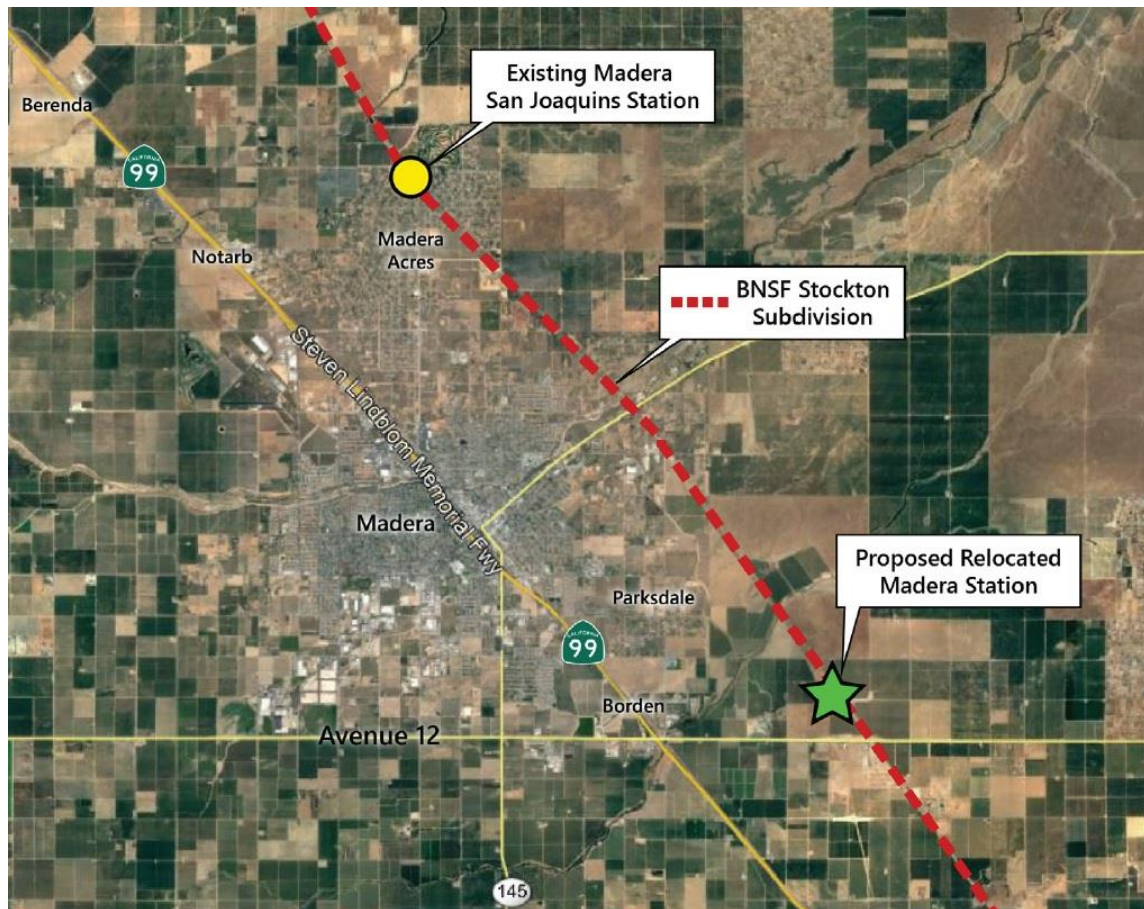
- On May 31, 2019, the SJJPA approved an agreement with AECOM for Project Development Services (planning, outreach, environmental and engineering support) for the Madera Station Relocation Project.
- The Madera Station Relocation Project is an element of the Valley Rail program and the relocated Madera San Joaquins Station is funded as part of the 2018 TIRCP award.

Madera Station Relocation Amendment 01

- As the IS/MND progressed in coordination with the California High-Speed Rail Authority and property owners in the vicinity of the station, significant revisions of the design for the new Madera Station were required that were expanded the original project limits.
- Additional public outreach within Madera County was also undertaken that exceeded the level contemplated in the original scope.

Madera Station Relocation Amendment 01

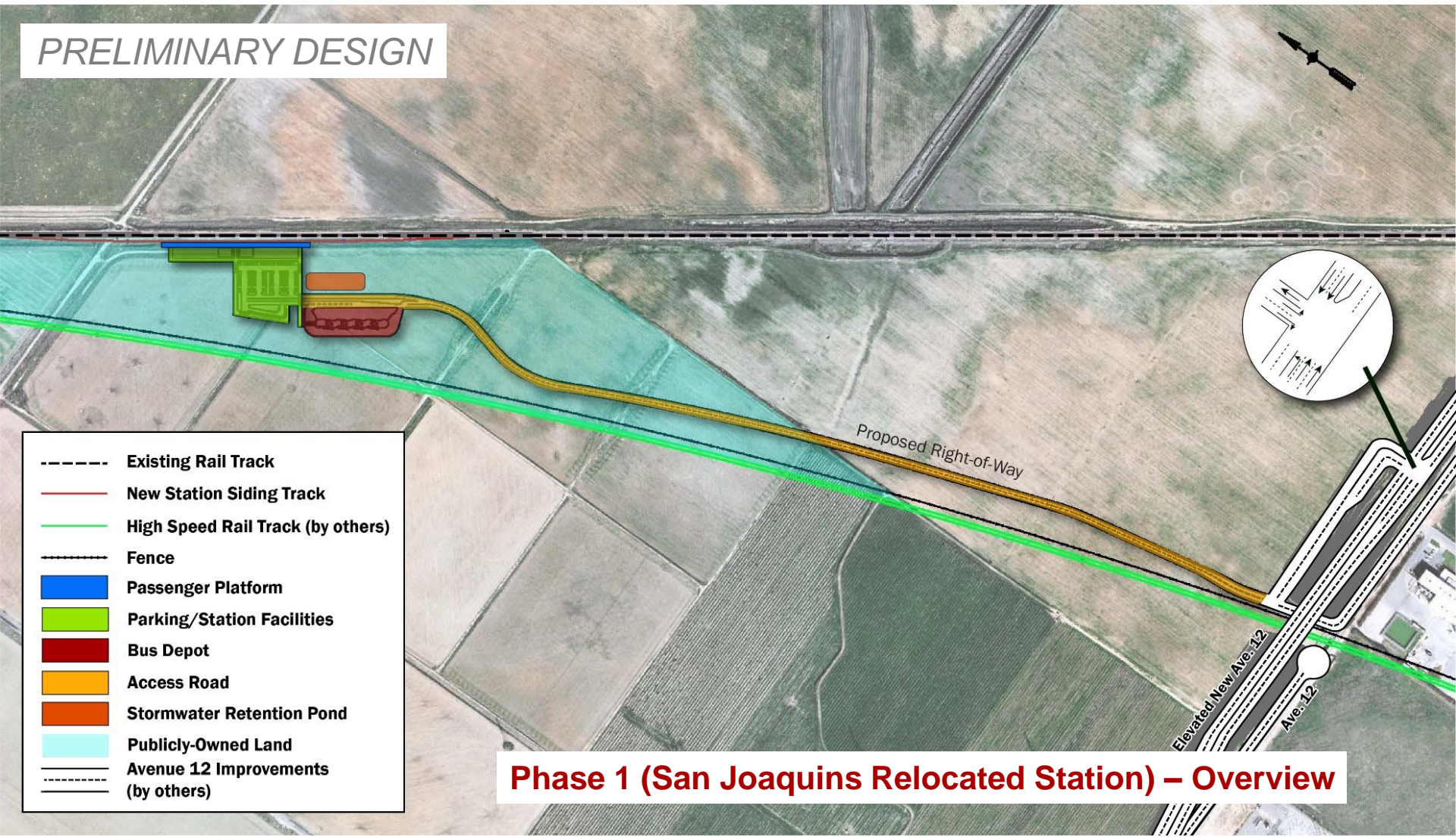
Project Location



- Existing Madera San Joaquins Station located in vicinity of Madera Acres
- Proposed Station located just north of Avenue 12 along the existing BNSF tracks

Madera Station Relocation Amendment 01

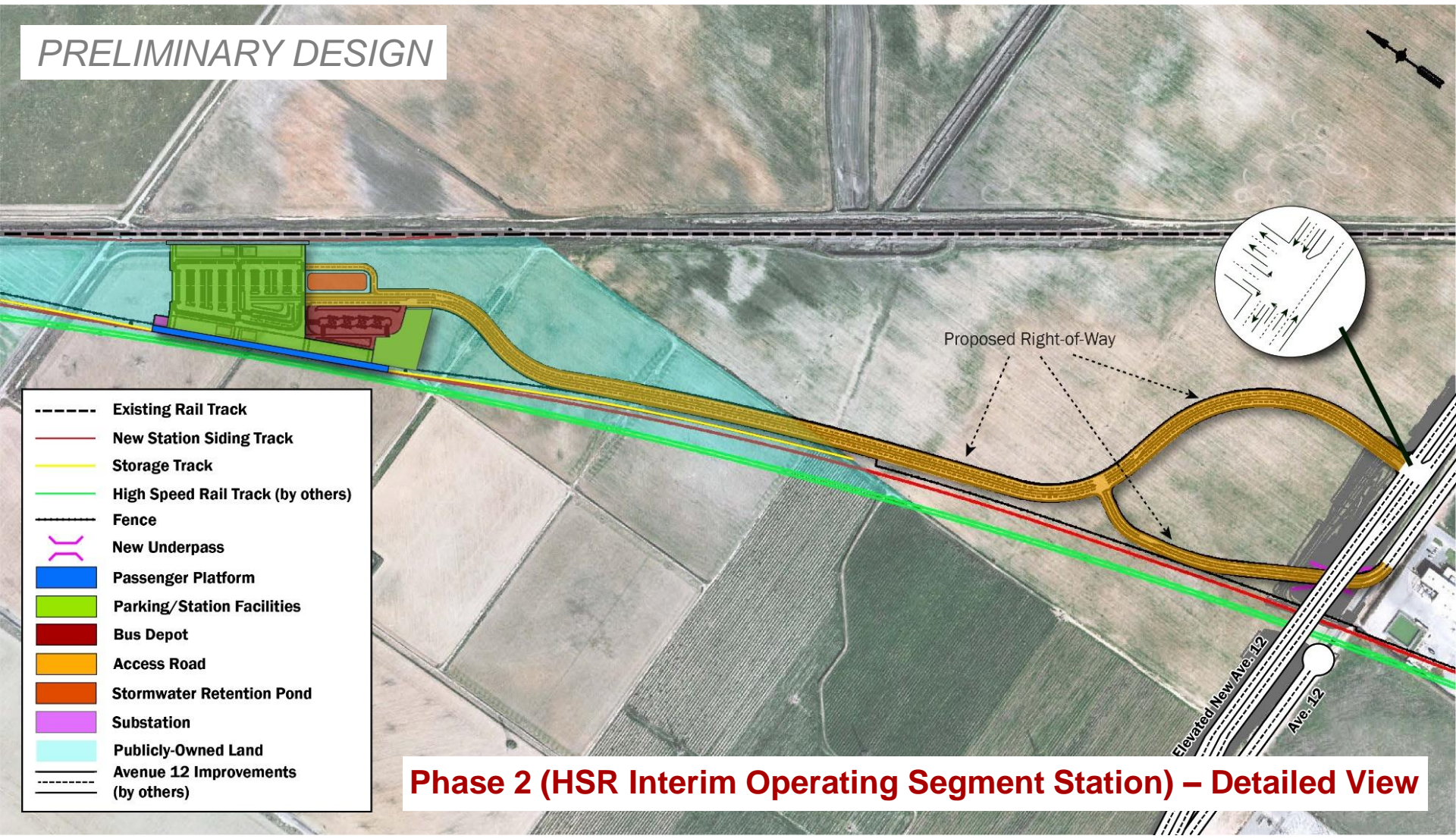
PRELIMINARY DESIGN



Phase 1 (San Joaquins Relocated Station) – Overview

Madera Station Relocation Amendment 01

PRELIMINARY DESIGN



Madera Station Relocation Amendment 01



Project Schedule

Environmental Clearance

- Release of Draft IS/MND – Early October
- Comment Period (incl. Public Webinar) – Early Oct/Early Nov
- Release of Final IS/MND – Mid January
- Approval of IS/MND at SJJPA Board – Late January

Madera Station Relocation Amendment 01



Project Schedule

Future Phases of the Project

- Final Design – 2021-2022
- Construction (Phase 1) – 2023-2024
- Commencement of San Joaquins Service (Phase 1) – 2024
- Construction (Phase 2) – 2026-2028
- Commencement of Interim HSR Service (Phase 2) – 2029

Madera Station Relocation Amendment 01



- The draft IS/MND is nearly complete and will be released to the public no later than October 2020.
- Additional funding for the AECOM contract is needed to respond to comments and complete the Final IS/MND.

Madera Station Relocation Amendment 01

Fiscal Impact:

- Project costs for the current fiscal year are identified in the 2020/2021 Work Program & Budget within the Capital Projects Budget. Funding for the Madera Station Relocation IS/MND comes from the 2018 “Valley Rail” TIRCP award.

Madera Station Relocation Amendment 01

Recommendation:

- Approve a Resolution of the Board Members of the San Joaquin Joint Powers Authority Approving Amendment 01 to Agreement 19-J-03-25-0-00 with AECOM to Increase the Total Compensation Amount by \$50,000 for the Completion of Project Development Services for Madera Station Relocation Project, Revised Total Contract Amount Not-To-Exceed \$416,000 and Authorizing the Executive Director to Execute Any and All Documents Related to the Project.



San Joaquin Joint Powers Authority

Item 6

San Joaquins Operations and Ridership/Revenue Update

David Lipari

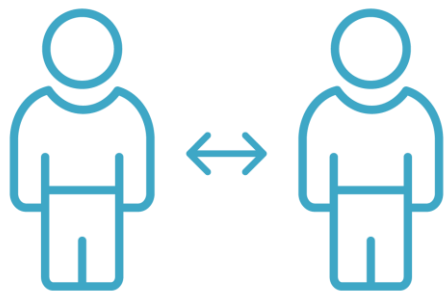
Currently Operating Trains

Southbound San Joaquins Trains				
STATION	710	712	716	718
OAKLAND	7:36AM	9:36AM	1:36PM	5:36PM
EMERYVILLE	7:47AM	9:47AM	1:46PM	5:46PM
RICHMOND	7:55AM	9:55AM	1:55PM	5:55PM
MARTINEZ	8:25AM	10:25AM	2:25PM	6:25PM
ANTIOCH	8:50AM	10:50AM	2:50PM	6:50PM
STOCKTON	9:23AM	11:23AM	3:23PM	7:23PM
MODESTO	9:56AM	11:56AM	3:56PM	7:56PM
TURLOCK-DENAIR	10:12AM	12:12PM	4:09PM	8:09PM
MERCED	10:45AM	12:45PM	4:45PM	8:45PM
MADERA	11:19AM	1:19PM	5:19PM	9:19PM
FRESNO	11:49AM	1:49PM	5:49PM	9:49PM
HANFORD	12:24PM	2:24PM	6:24PM	10:24PM
CORCORAN	12:40PM	2:40PM	6:40PM	10:40PM
WASCO	1:17PM	3:17PM	7:17PM	11:12PM
BAKERSFIELD	1:57PM	3:57PM	7:57PM	11:57PM

Currently Operating Trains

Northbound San Joaquins Trains				
STATION	711	713	715	719
BAKERSFIELD	4:12AM	8:12AM	12:12PM	4:12PM
WASCO	4:39AM	8:39AM	12:39PM	4:39PM
CORCORAN	5:14AM	9:14AM	1:19PM	5:19PM
HANFORD	5:34AM	9:34AM	1:39PM	5:39PM
FRESNO	6:12AM	10:16AM	2:16PM	6:16PM
MADERA	6:38AM	10:42AM	2:42PM	6:42PM
MERCED	7:23AM	11:23AM	3:23PM	7:23PM
TURLOCK-DENAIR	7:45AM	11:45AM	3:45PM	7:45PM
MODESTO	8:03AM	12:03PM	4:03PM	8:03PM
STOCKTON	8:40AM	12:40PM	4:40PM	8:40PM
ANTIOCH	9:08AM	1:08PM	5:09PM	9:08PM
MARTINEZ	9:30AM	1:30PM	5:31PM	9:30PM
RICHMOND	9:54AM	1:54PM	5:55PM	9:56PM
EMERYVILLE	10:09AM	2:14PM	6:14PM	10:17PM
OAKLAND	10:27AM	2:27PM	6:27PM	10:29PM

Health and Safety Response



Social Distancing Policy



Facial Covering Requirement



Hand Sanitizer



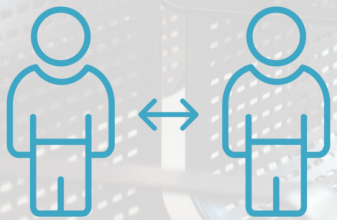
Contactless Ticketing



Advanced Cleaning Protocols









San Joaquins Operations and Ridership/Revenue Update

Reopening of San Joaquins Stations

- On March 23, 2020, as a part of the operational changes in response to COVID-19, the Hanford, Fresno, Merced, and Modesto stations were closed.
- As SJJPA staff has evaluated the operational environment, it has agreed with Amtrak to reopen the stations on October 5, 2020.
- Amtrak's internal cleaning and safety protocols will continue to keep passengers safe with the stations reopening.
- Passengers will regain the ability to check bags, purchase tickets (credit card only), and wait socially distanced indoors.
- This will be a helpful step for riders returning to the service, especially in advance of the Holiday Season and colder months.

San Joaquins Operations and Ridership/Revenue Update

Reopening of San Joaquins Stations

- The stations reopening is a part of a larger plan to align the service for FY21.
- On October 5, 2020, many of the San Joaquins and shared stations will begin operating with reduced hours and workforce that is aligned with the current reduced schedule to meet the needs of the passengers.

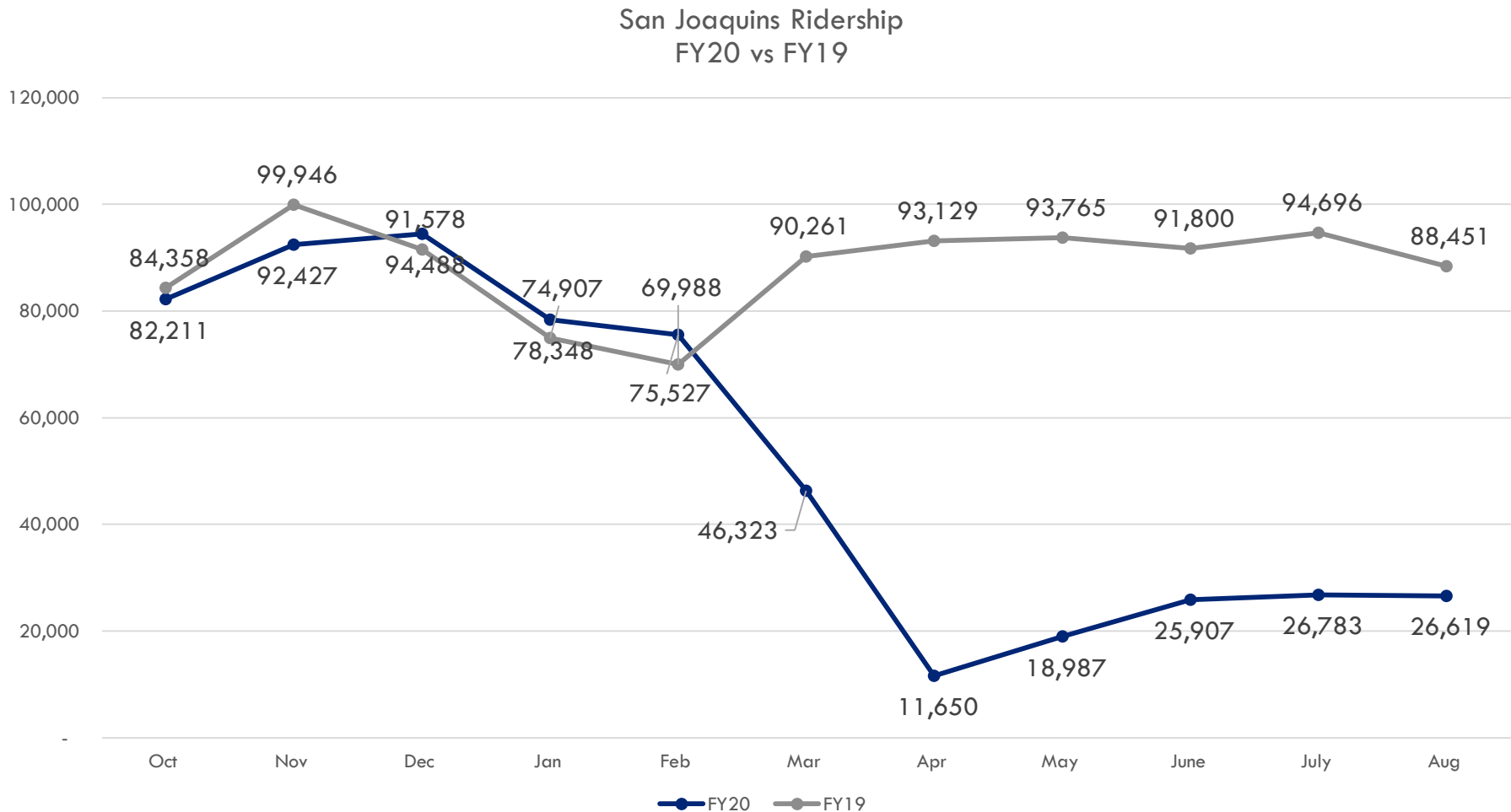
San Joaquins Operations and Ridership/Revenue Update

Reopening of San Joaquins Stations

New San Joaquin and Shared Station Hours		
Station	Previous Station Hours	October 5, 2020 Station Hours
BAKERSFIELD	3:45A-10:30P	3:45A-10:30P
HANFORD	5:15A-9:00P	9:00A-6:30P
FRESNO	3:45A-10:00P	5:45A-6:30P
MERCED	5:00A-9:00P	10:15A-7:30P
MODESTO	7:00A-10:00P	7:30A-4:45P
STOCKTON	7:00A-8:30P	8:10A-8:45P
SACRAMENTO*	5:00A-11:59P	5:00A-12:00A
MARTINEZ*	5:15A-11:30P	5:30A-11:00P
EMERYVILLE*	4:50A-11:00P	6:00A-10:30P
OAKLAND*	5:00A-11:59P	6:00A-10:30P
*Shared Stations – Stations that are shared with Capitol Corridor and Amtrak Long Distance Service.		

San Joaquins Operations and Ridership/Revenue Update

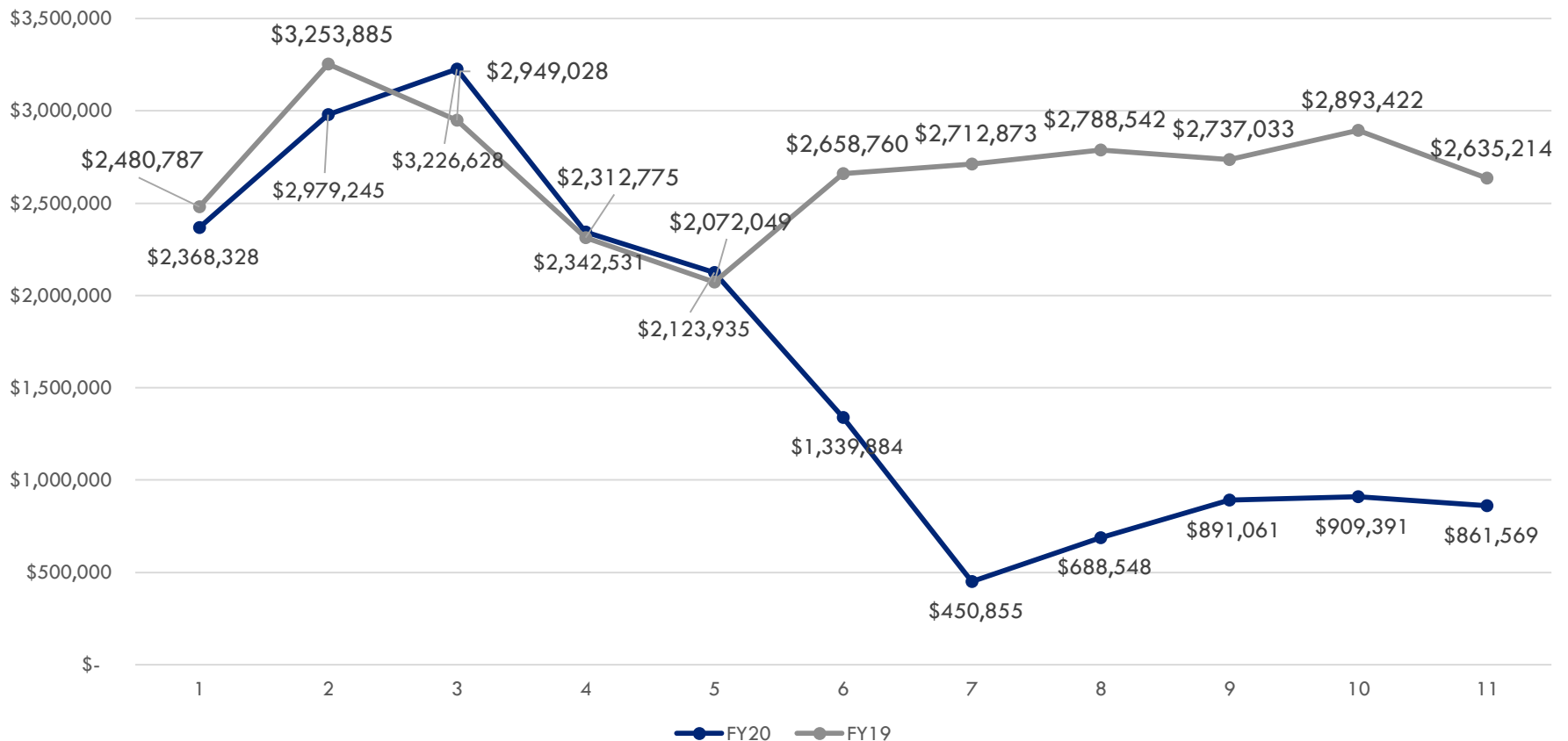
San Joaquins Ridership



San Joaquins Operations and Ridership/Revenue Update

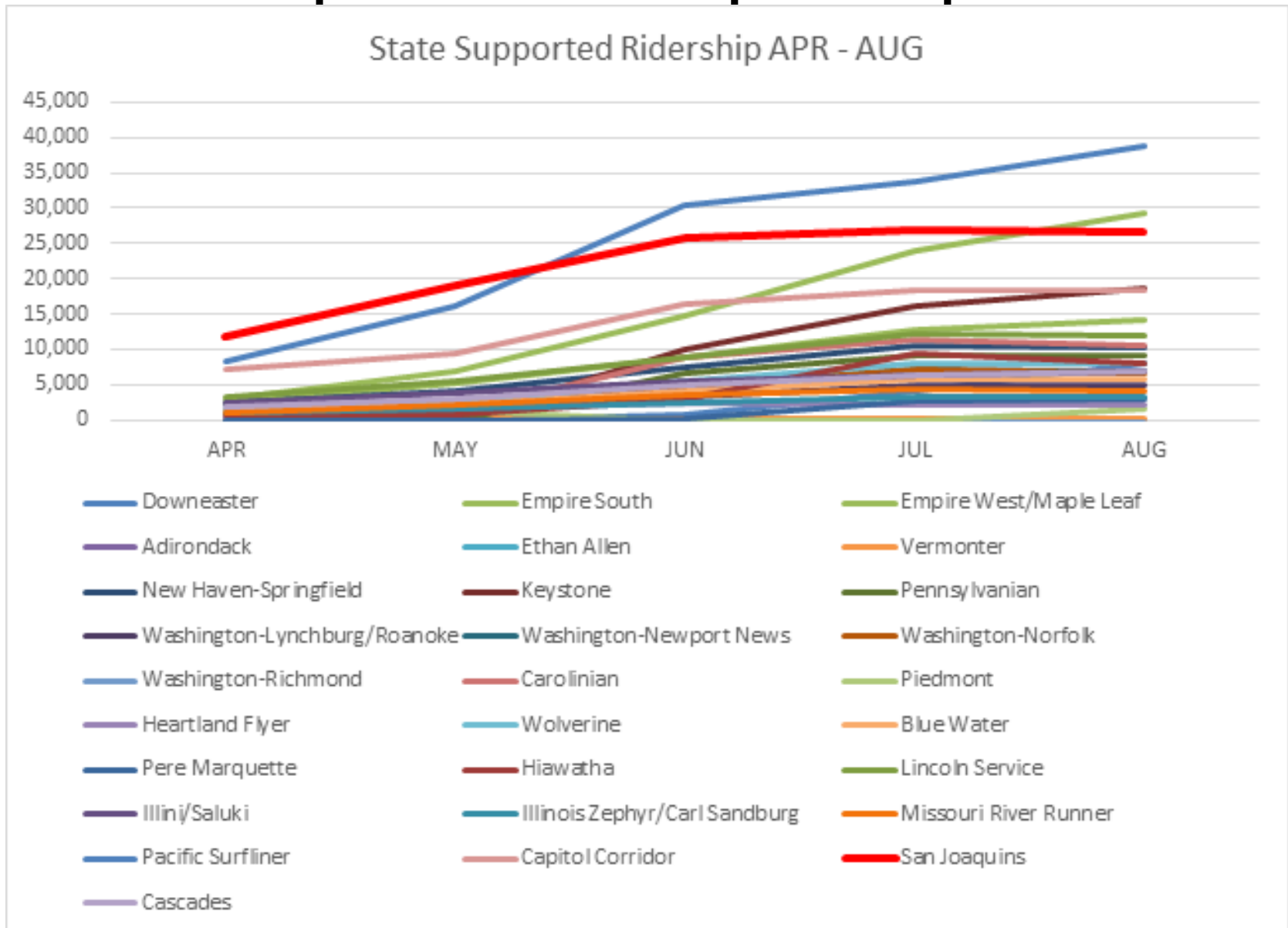
San Joaquins Revenue

San Joaquins Revenue
FY20 vs FY19



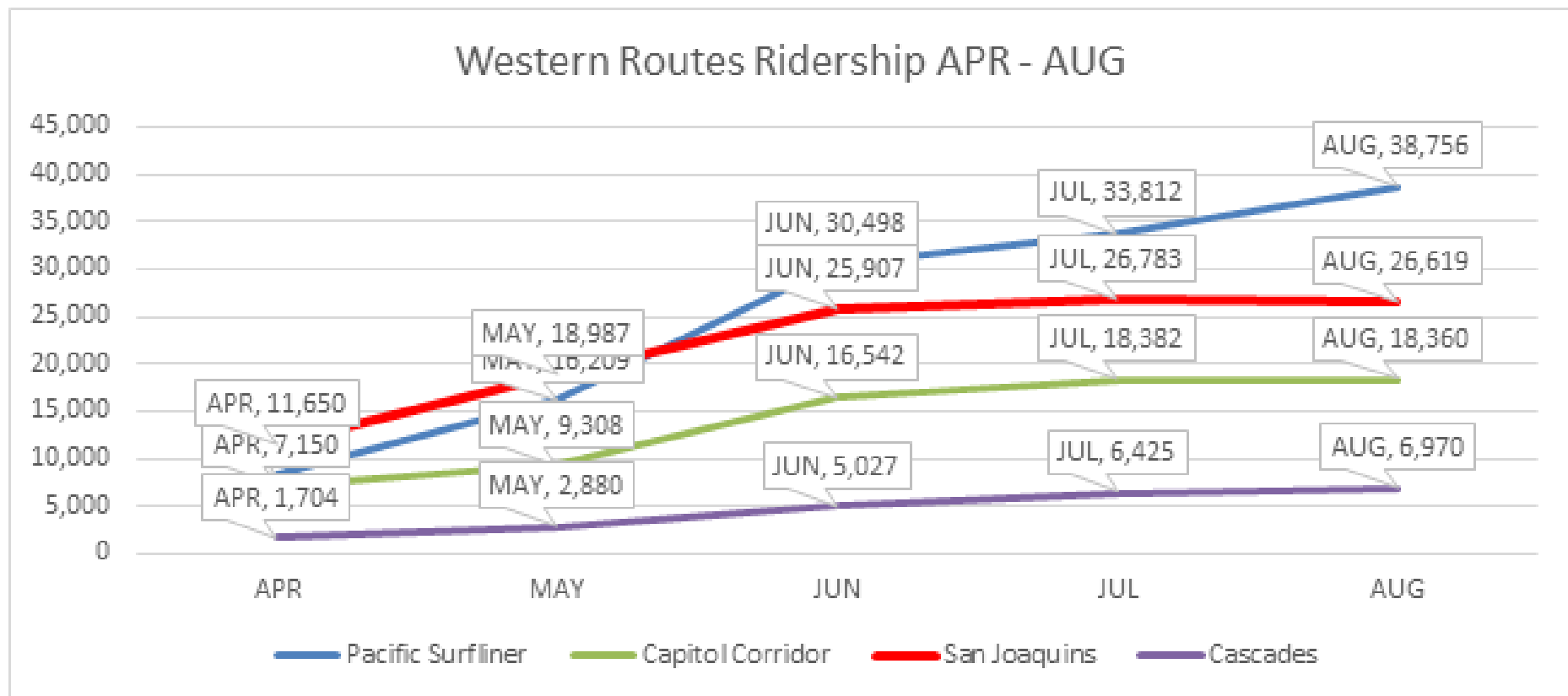
San Joaquins Operations and Ridership/Revenue Update

San Joaquins Ridership Comparison



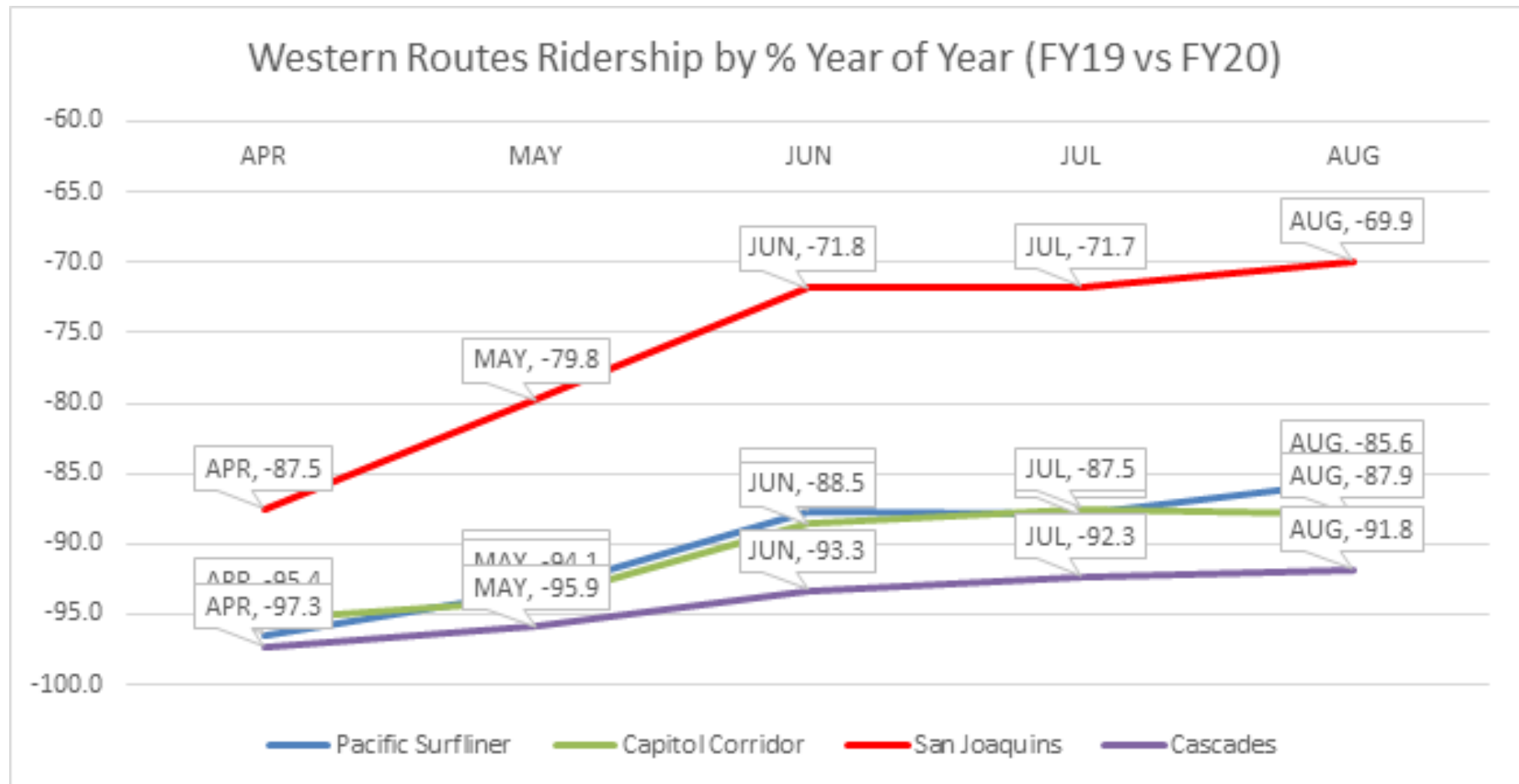
San Joaquins Operations and Ridership/Revenue Update

San Joaquins Ridership Comparison



San Joaquins Operations and Ridership/Revenue Update

San Joaquins Ridership Comparison



San Joaquins Operations and Ridership/Revenue Update

Near Term Operational Initiatives

- Monitoring Station Re-openings
- Continual monitoring of peak loads to ensure appropriate social distancing space
- Holiday operations planning and outreach
- New Siemens Rail Car introduction – March/April



San Joaquin Joint Powers Authority

Item 7

Update on San Joaquins Thruway Bus Network

Paul Herman

San Joaquins Thruway Bus Update

- The COVID-19 crisis has decimated public transportation ridership throughout California.
 - San Joaquins ridership and revenue dropped by over 85% in April.
- Although San Joaquins ridership is beginning to rise, the COVID-19 pandemic has created a major recession and it will take time to for California to fully recover.

San Joaquins Thruway Bus Update

- The San Joaquins rail service operations have been reduced by nearly half of what it was.
- In addition, SJJPA has already suspended or significantly reduced thruway bus service on several routes.
- The San Joaquins remain an essential public transportation service for California, but additional cuts and cost-savings measures are needed.

San Joaquins Thruway Bus Update



- Costs can be cut substantially without losing significant potential San Joaquins ridership and revenue and the Thruway Bus Network will remain a vital part of the San Joaquins operations.
- SJJPA has worked with Amtrak on the contracts currently held by Amtrak to make sure that routes that are truncated, suspended, or terminated are altered in accordance with the contracts provisions.

CALIFORNIA'S AMTRAK PASSENGER RAIL and THRUWAY BUS SERVICE



San Joaquins Thruway Bus



Sacramento to Marysville/Chico/Redding – RT 3

Route 3 Ridership			
	Total Riders (FY17)	Riders/Day	% of Total
Lodi	3131	8.58	2.4%
Elk Grove	4403	12.06	3.4%
Sacramento	85454	234.12	65.0%
Sacramento (Capitol)	1194	3.27	0.9%
Davis	10895	29.85	8.3%
Marysville	3420	9.37	2.6%
Oroville	2652	7.27	2.0%
Chico	15310	41.95	11.7%
Red Bluff	1414	3.87	1.1%
Redding	3528	9.67	2.7%
Total	131401	360.00	

San Joaquins Thruway Bus



Martinez to McKinleyville – RT 7

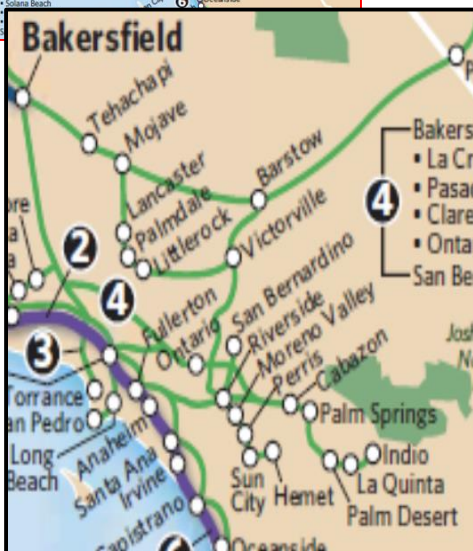
Route 7 Ridership			
	Total Riders (FY17)	Riders/Day	% of Total
Vallejo (Six Flags)	944	2.59	1.7%
Vallejo	3640	9.97	6.4%
Napa	4277	11.72	7.5%
Petaluma	3134	8.59	5.5%
Rohnert Park	3417	9.36	6.0%
Santa Rosa	11646	31.91	20.4%
Healdsburg	517	1.42	0.9%
Cloverdale	323	0.88	0.6%
Ukiah	4109	11.26	7.2%
Willits	1289	3.53	2.3%
Laytonville	724	1.98	1.3%
Leggett	95	0.26	0.2%
Garberville	3811	10.44	6.7%
Rio Dell-Scotia	404	1.11	0.7%
Fortuna	1900	5.21	3.3%
Eureka	6404	17.55	11.2%
Arcata	10002	27.40	17.5%
McKinleyville	472	1.29	0.8%
Total	57108	156.46	

San Joaquins Thruway Bus



Bakersfield / Palm Springs / Indio - RT 19

Route 19 Ridership			
	Total Riders (FY17)	Riders/Day	% of Total
La Crescenta	528	1.45	1.1%
Pasadena	5663	15.52	12.2%
Claremont	4839	13.26	10.4%
Ontario	6938	19.01	14.9%
Riverside	10234	28.04	22.0%
San Bernardino	10258	28.10	22.0%
Cabazon	268	0.73	0.6%
Palm Springs (Airport)	1308	3.58	2.8%
Palm Springs (Downtown)	596	1.63	1.3%
Palm Desert	460	1.26	1.0%
La Quinta	175	0.48	0.4%
Indio	1810	4.96	3.9%
Moreno Valley	821	2.25	1.8%
Perris	880	2.41	1.9%
Sun City	552	1.51	1.2%
Hemet	552	1.51	1.2%
Hemet (Simpson Center)	684	1.87	1.5%
Total	46566	127.58	



© 2013 Pearson Education, Inc. or its affiliate(s). All rights reserved. Pearson Education, Inc., publishing as Pearson Benjamin Cummings, 101 Philip Drive, Assinippi Park, New York, NY 10986-1996

© 2015 Pearson Education, Inc. or its affiliate(s). All rights reserved.



San Joaquins Thruway Bus



RT 1 – Bakersfield to LA / Southern California

Route 1A + 1B Ridership			
	Total Riders (FY17)	Riders/Day	% of Total
Glendale	5273	14.45	2.2%
Los Angeles	205701	563.56	87.4%
Long Beach	6902	18.91	2.9%
San Pedro (Terminal)	411	1.13	0.2%
San Pedro (Library)	400	1.10	0.2%
Fullerton	2445	6.70	1.0%
Santa Ana	2707	7.42	1.1%
Irvine	818	2.24	0.3%
San Juan Capistrano	223	0.61	0.1%
Oceanside	2133	5.84	0.9%
Solana Beach	483	1.32	0.2%
San Diego	7912	21.68	3.4%
Total	235408	644.95	

Route 1C Ridership			
	Total Riders (FY17)	Riders/Day	% of Total
Santa Clarita-Newhall	7479	20.49	19.0%
Burbank Airport	7443	20.39	18.9%
Van Nuys	12741	34.91	32.4%
Westwood-UCLA	9323	25.54	23.7%
Westchester	634	1.74	1.6%
El Segundo	769	2.11	2.0%
Torrance	924	2.53	2.4%
Total	39313	107.71	



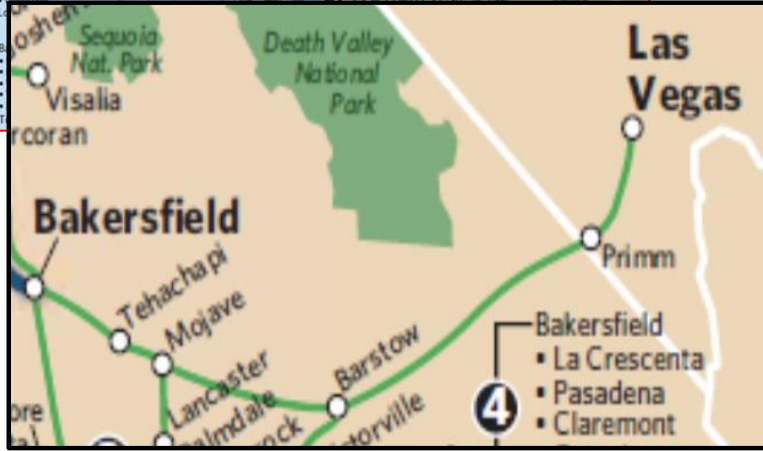
San Joaquins Thruway Bus

Bakersfield to Las Vegas – RT 9

CALIFORNIA — TRAIN AND THRUWAY SERVICE



Route 9 Ridership			
	Total Riders (FY17)	Riders/Day	% of Total
Barstow (Amtrak)	783	2.15	5.5%
Barstow (Bus Stop)	454	1.24	3.2%
Las Vegas (S. Strip)	9183	25.16	65.0%
Las Vegas (Greyhound)	3716	10.18	26.3%
Total	14136	38.73	



San Joaquins Thruway Bus

CALIFORNIA — TRAIN AND THRUWAY SERVICE



Bakersfield / Oxnard / Santa Barbara – RT 10

Route 10 Ridership

	Total Riders (FY17)	Riders/Day	% of Total
Fillmore	626	1.72	2.2%
Santa Paula	1630	4.47	5.9%
Oxnard	12924	35.41	46.4%
Ventura	2743	7.52	9.8%
Carpinteria	493	1.35	1.8%
Santa Barbara (Amtrak)	8028	21.99	28.8%
Santa Barbara (UCSB)	1418	3.88	5.1%
Total	27862	76.33	

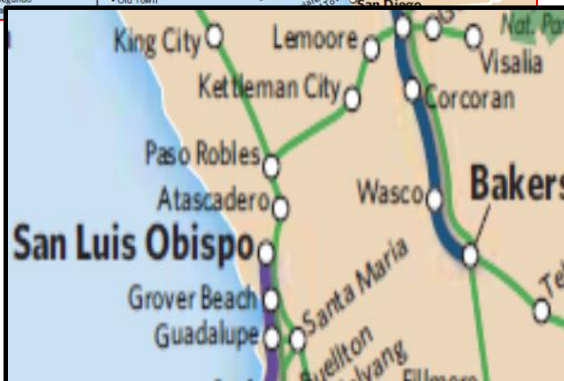


San Joaquins Thruway Bus

Visalia / Hanford / SLO / Santa Maria - RT 18



Route 18 Ridership			
	Total Riders (FY17)	Riders/Day	% of Total
Lemoore	179	0.49	0.7%
Lemoore (Naval Station)	15	0.04	0.1%
Kettleman City	66	0.18	0.3%
Paso Robles	3010	8.25	12.0%
Atascadero	764	2.09	3.0%
San Luis Obispo (Cal Poly)	2239	6.13	8.9%
San Luis Obispo (Amtrak)	6125	16.78	24.3%
Grover Beach	3609	9.89	14.3%
Santa Maria	3931	10.77	15.6%
Goshen	100	0.27	0.4%
Visalia	5129	14.05	20.4%
Total	25167	68.95	





San Joaquin Joint Powers Authority

Item 8

Update on Turlock-Denair Station Bus Loop Project

Rene Gutierrez

Turlock-Denair Station Location



Turlock-Denair Station



Turlock-Denair Station

Before:



Turlock-Denair Station Location

Before:



Turlock-Denair Station Parking Improvement

After:

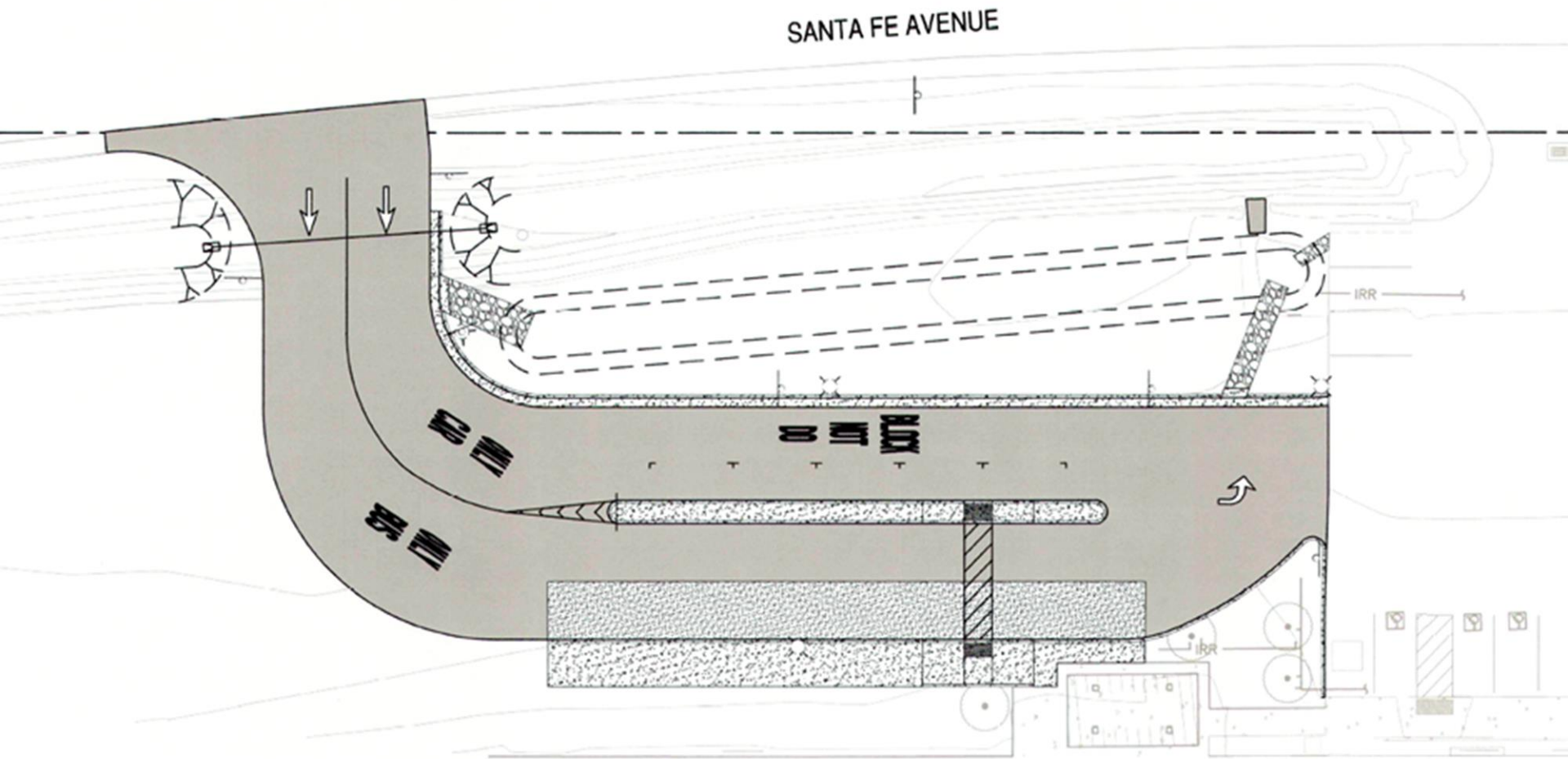


Turlock-Denair Bus Loop Project

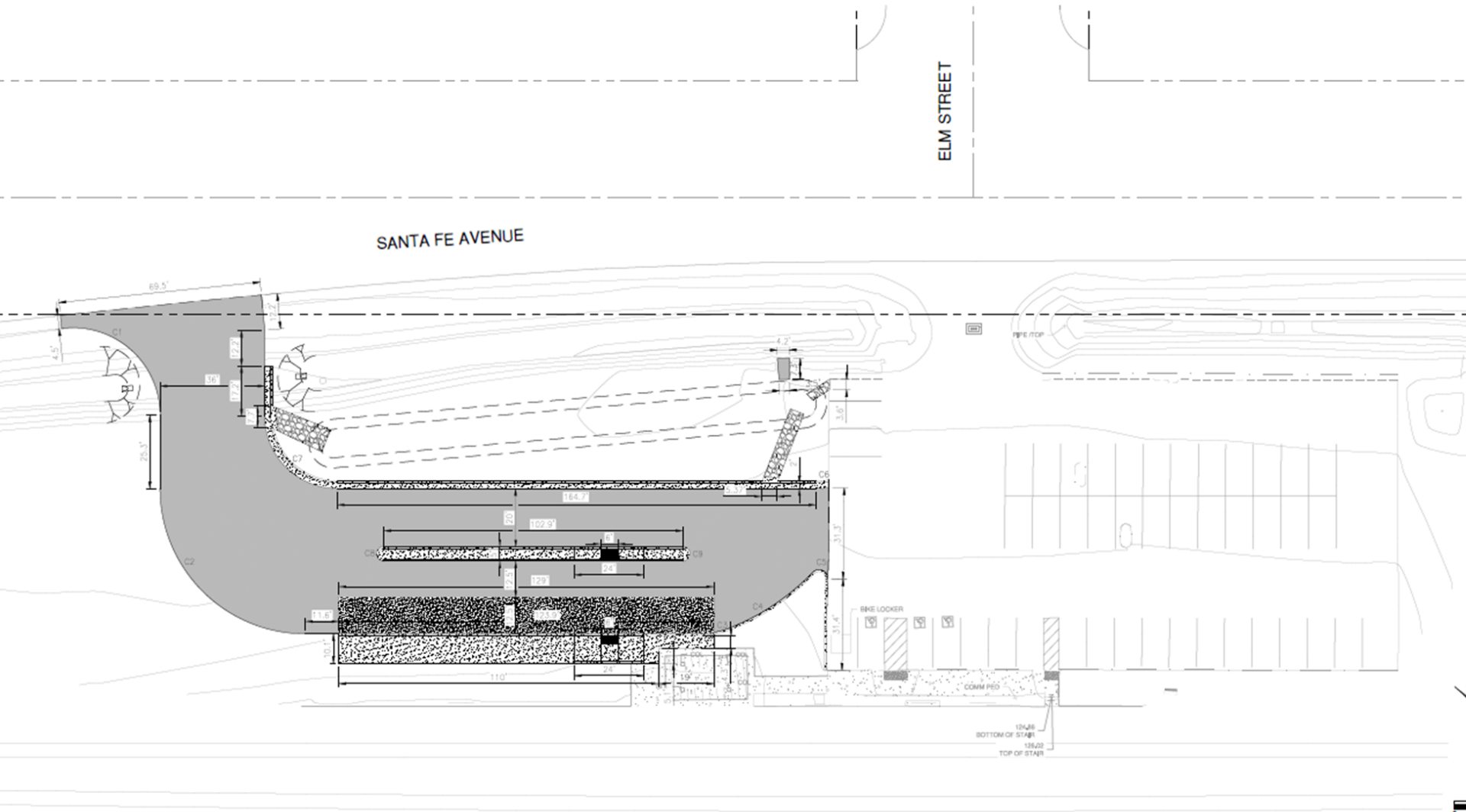
- Estimated project schedule for the bus-loop project at the Turlock-Denair Amtrak Station:

Project Milestone	Proposed	Completed
Begin Design	July 2019	July 2019
End Design Phase (Ready to List for Advertisement Milestone)	Dec 2019	Dec 2019
Project Approval and Environmental Document (PA&ED)	Nov 2019	Nov 2019
Plans, Specifications and Estimate (PS&E) 30% 90% 100%	Oct 2019 Nov 2019 Dec 2019	Oct 2019 Nov 2019 Dec 2019
Begin Construction Phase (Contract Award Milestone)	July 2020	July 2020
End Construction Phase (Construction Contract Acceptance Milestone)	Nov 2020	

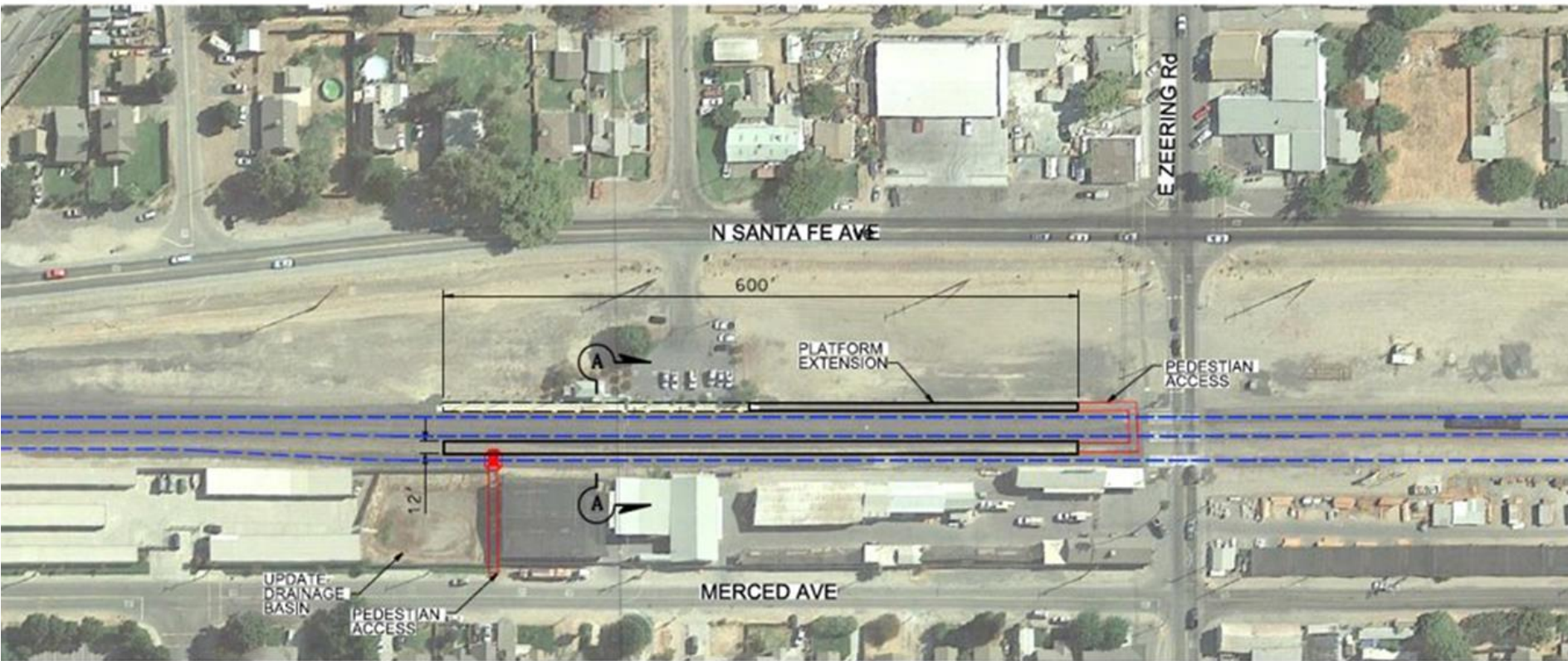
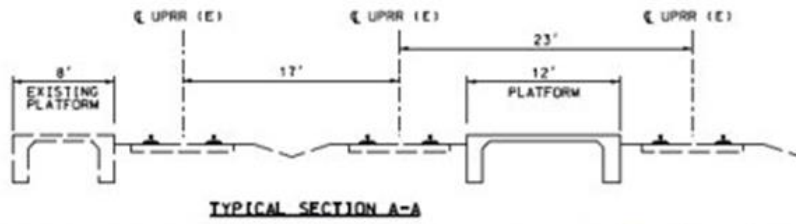
Turlock-Denair Bus Loop Project



Turlock-Denair Bus Loop & Parking Lot Improvement



Turlock-Denair Second Platform Design



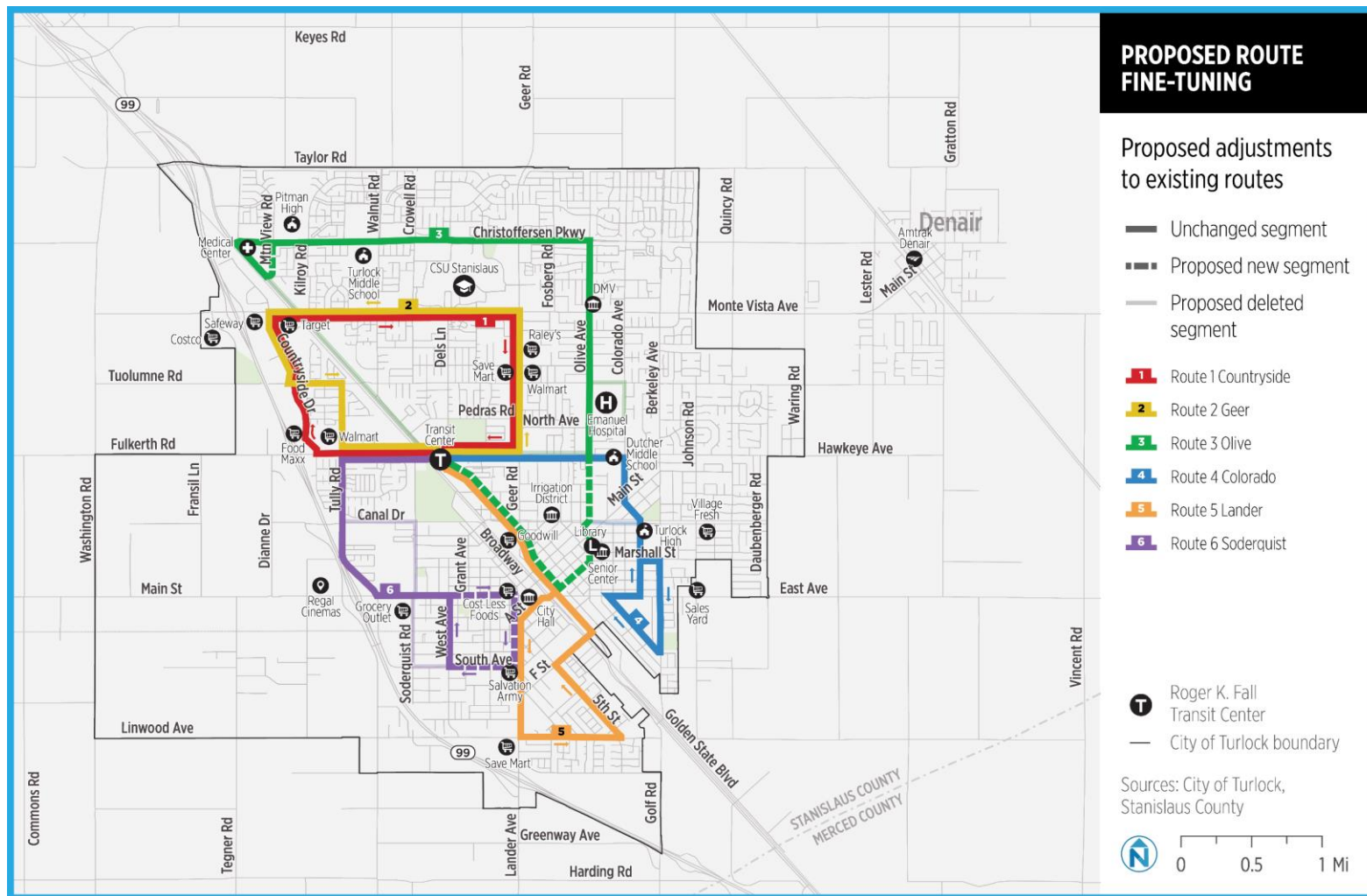
Turlock-Denair Station Outreach





1

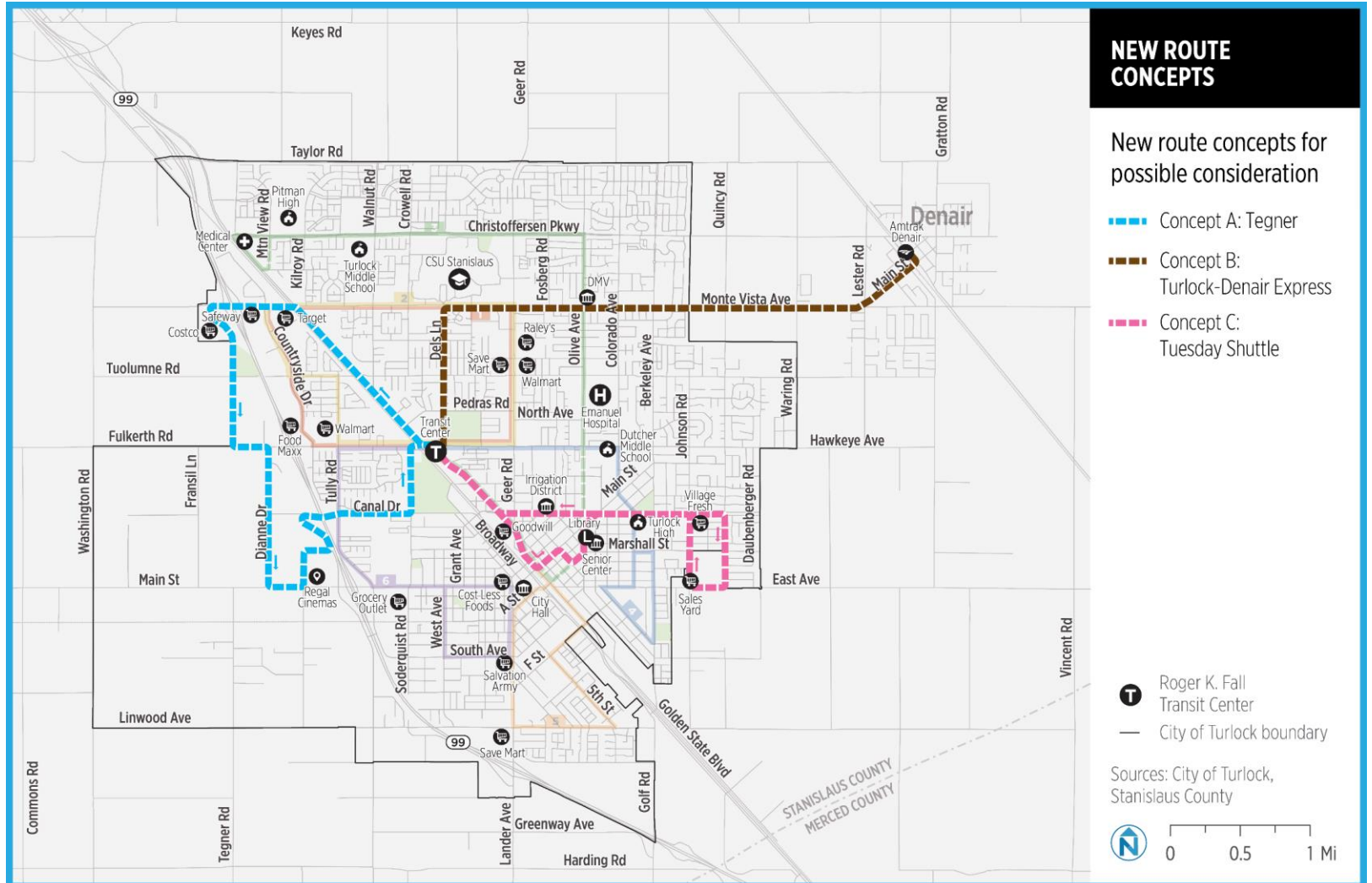
Fine-tuning today's transit network





2

Transit to
new areas





San Joaquin Joint Powers Authority

Item 9

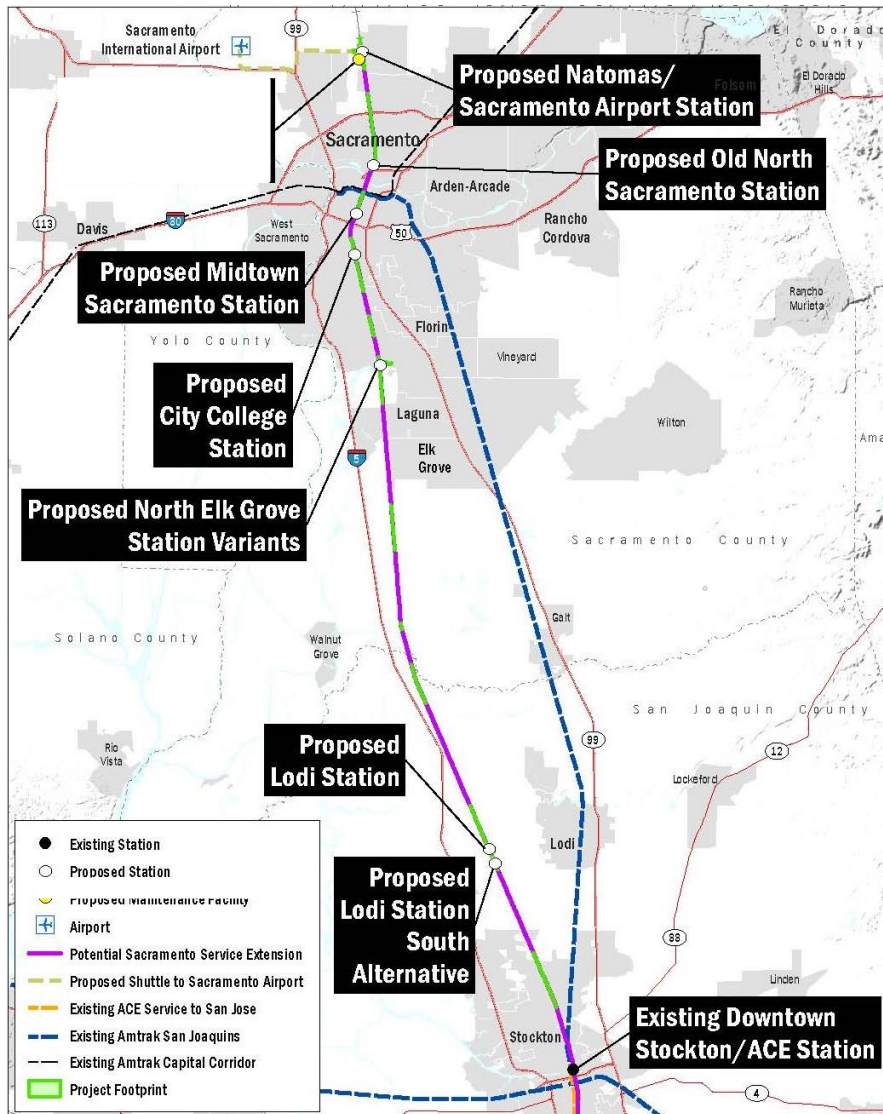
Update on Valley Rail Program

Kevin Sheridan



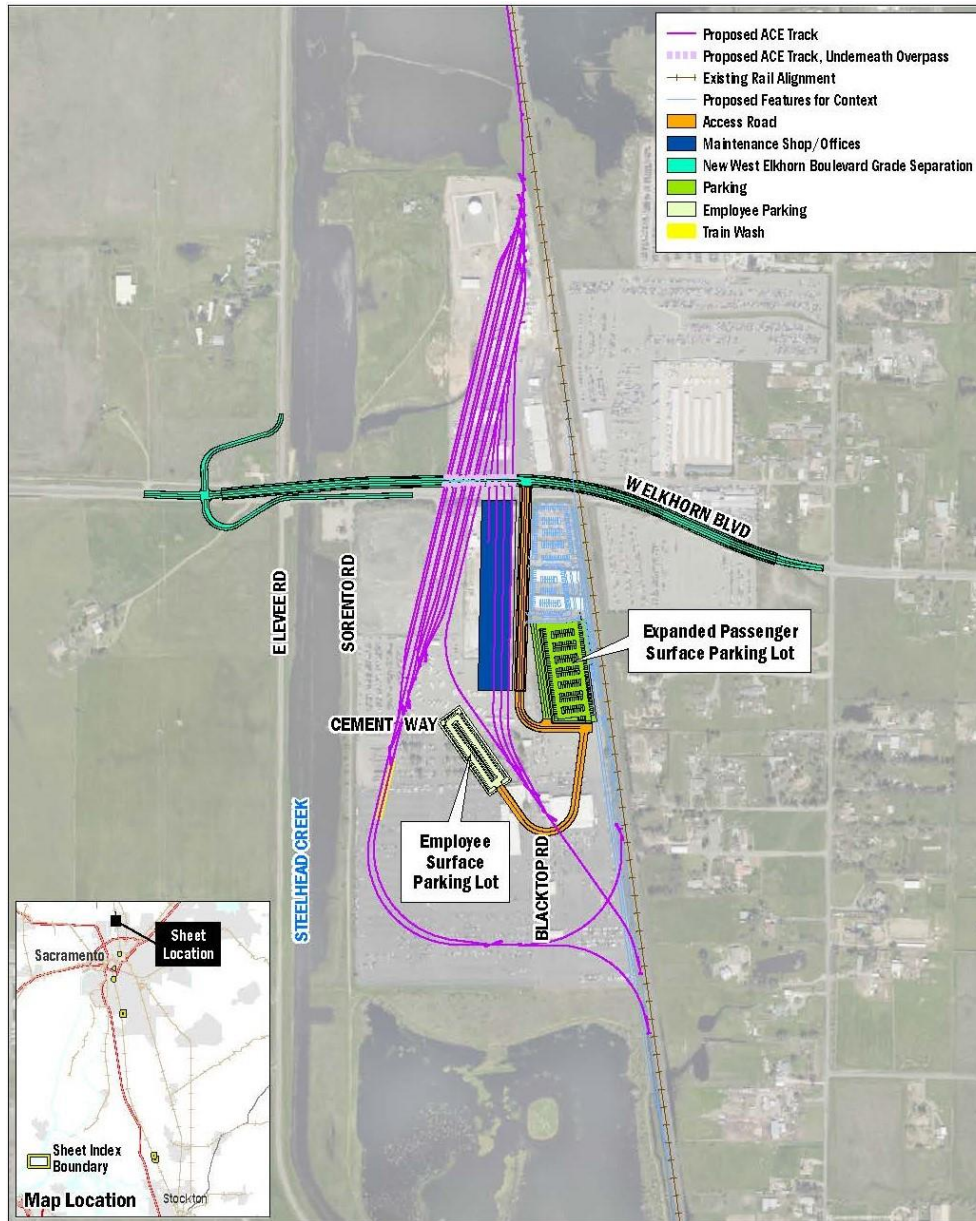
- Valley Rail Program includes expansion of both ACE and the San Joaquins Services
- Valley Rail is funded by the Transit and Intercity Rail Capital Program (TIRCP) and other state funding sources.

Overview of the Sacramento Extension

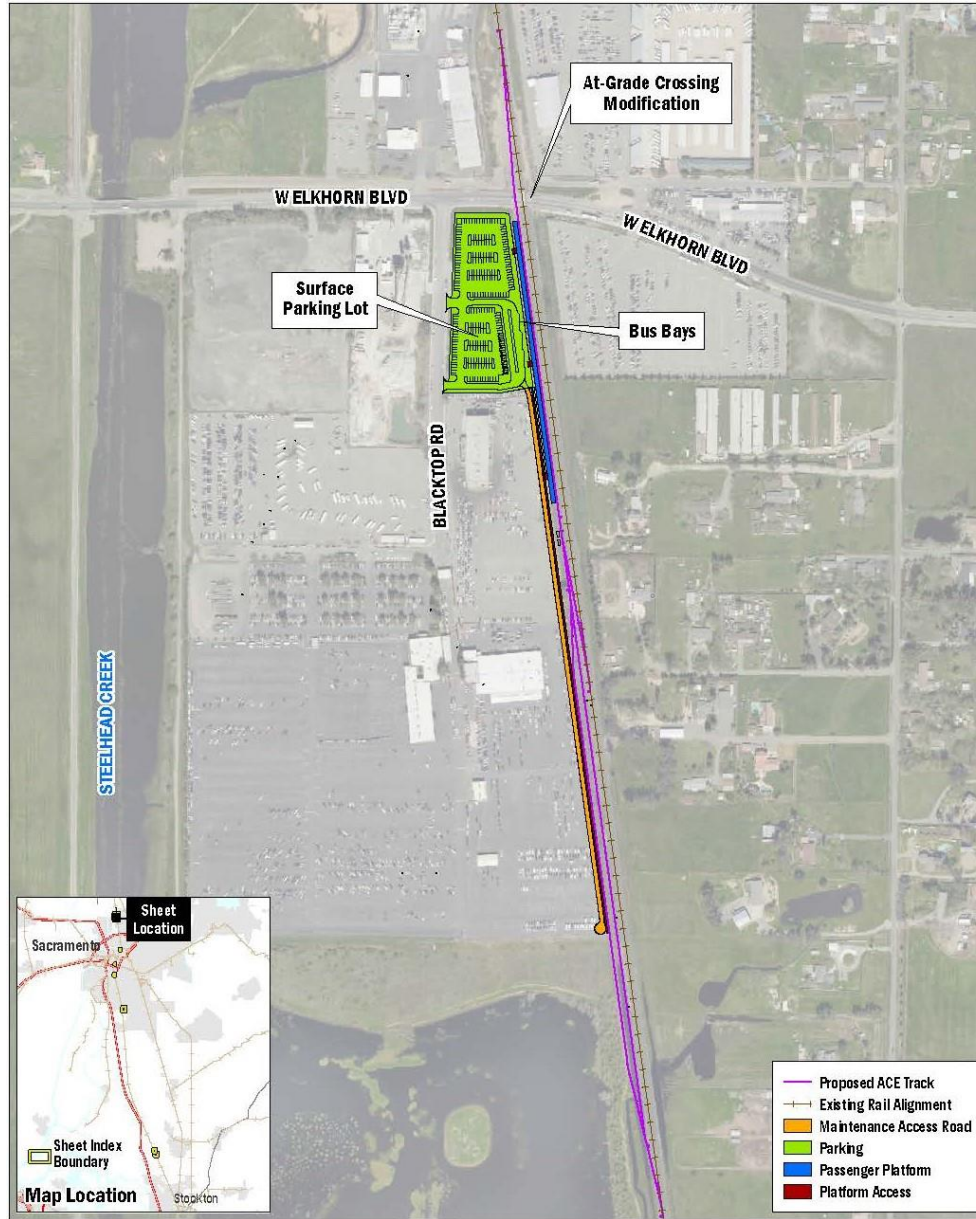


- Current service to Sacramento Valley Station is capped by UPRR
- Available service on the Sacramento subdivision by UPRR
- Service will support additional San Joaquins service and new ACE service

Removal of Phase 2 Maintenance Facility



Full Extent of Natomas Improvements

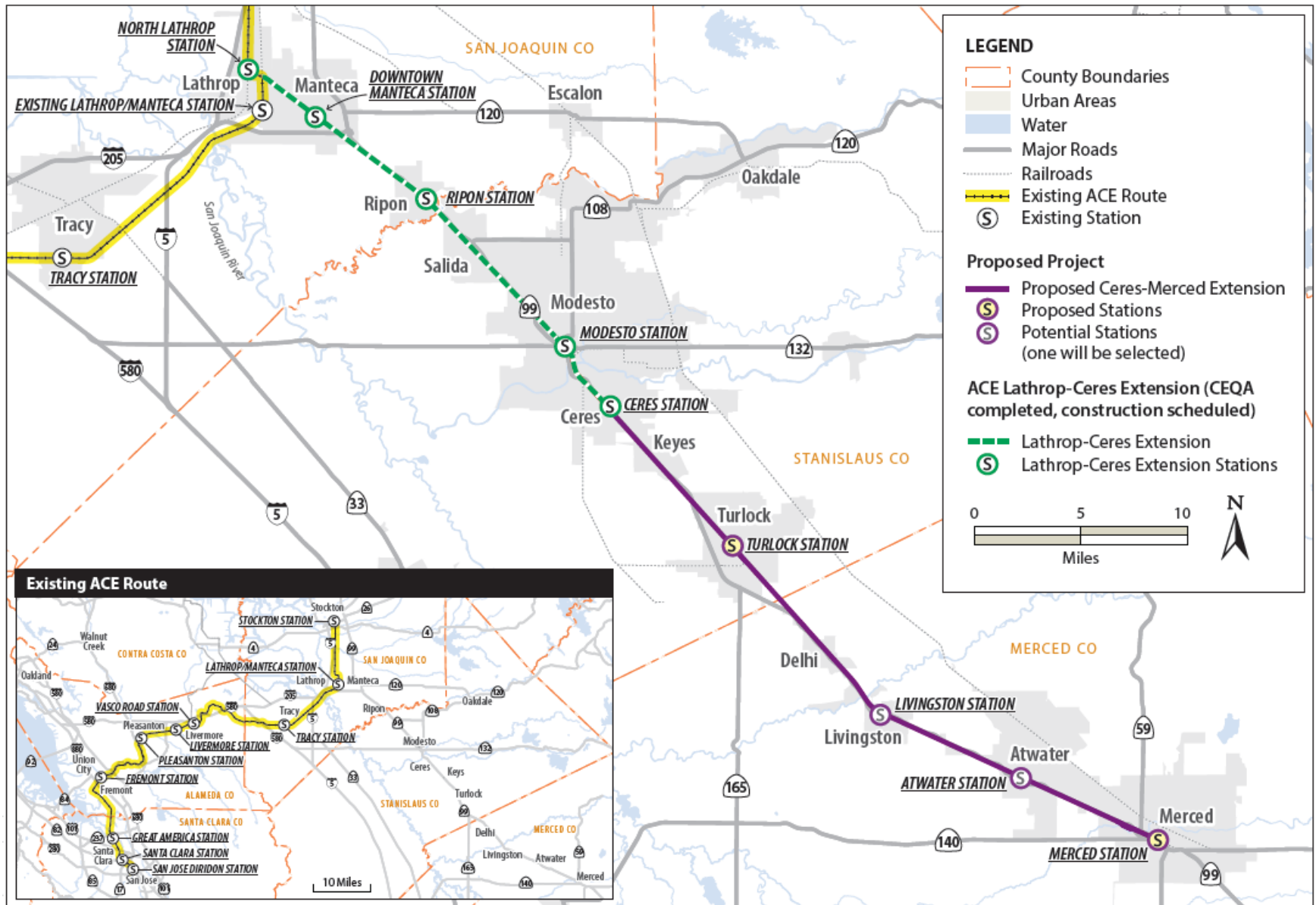


North Elk Grove Station Removed from Consideration





Project Overview: Project Location





Project Overview: Project Location (Close-Up View)





Key Project Milestones and Timeline





STOCKTON
DIAMOND

SJJPA Board Meeting

September 25, 2020
9 a.m.



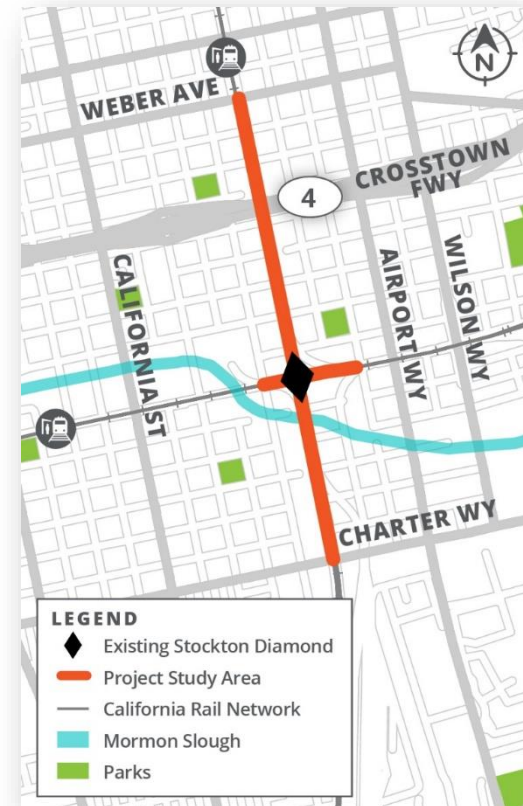
San Joaquin
Joint Powers Authority



STOCKTON DIAMOND GRADE SEPARATION PROJECT

Existing Rail Crossing

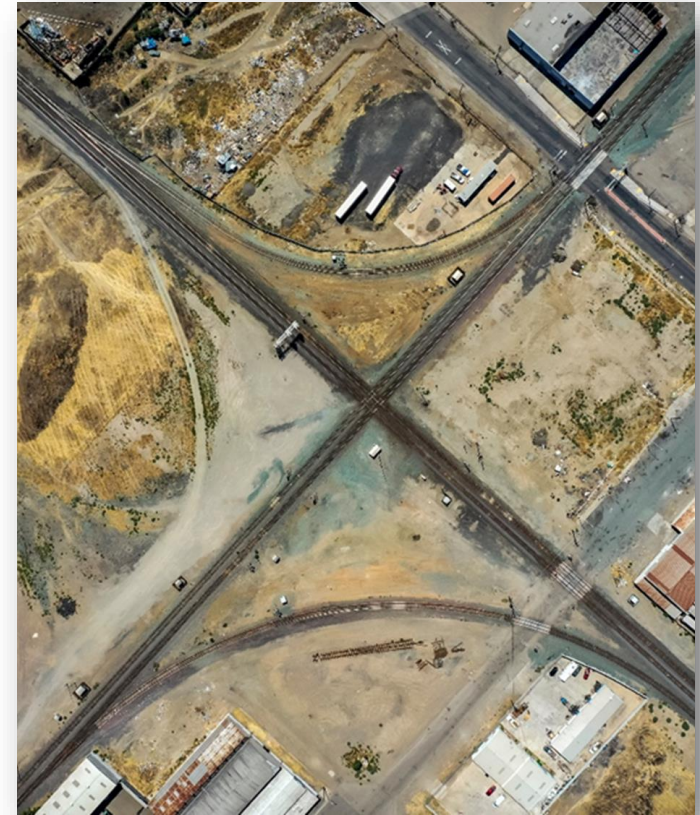
- Two rail lines intersect at-grade in Stockton
 - Union Pacific (runs north-south)
 - BNSF Railway (runs east-west)
- Stockton Diamond
 - Located just south of downtown
 - Double tracked, at-grade
- Rail lines shared with passenger services
 - UP (ACE & San Joaquins)
 - BNSF (San Joaquins)





Busiest, most congested rail bottleneck in CA

- **Critical** transportation **hub**
 - Freight from Port of Stockton to national network
 - Passenger service links affordable housing to jobs
- Significant rail **congestion** and service **delays**
- Impacts **frequency**, **reliability** and **expansion** potential
- Local **multi-modal delays** at rail crossings





STIMULATE MOBILITY: Improve rail efficiency and reliability



ENHANCE SAFETY: Improve track crossings



ECONOMIC VITALITY: Increased throughput and train velocity



INSPIRE CONNECTIONS: Support service expansion linking residents to jobs

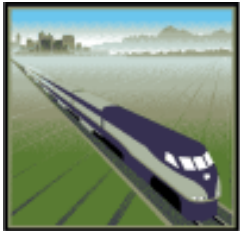


SUSTAINABILITY: Improve air quality with emission reduction

Project Partners



SAN JOAQUIN
REGIONAL
RAIL COMMISSION

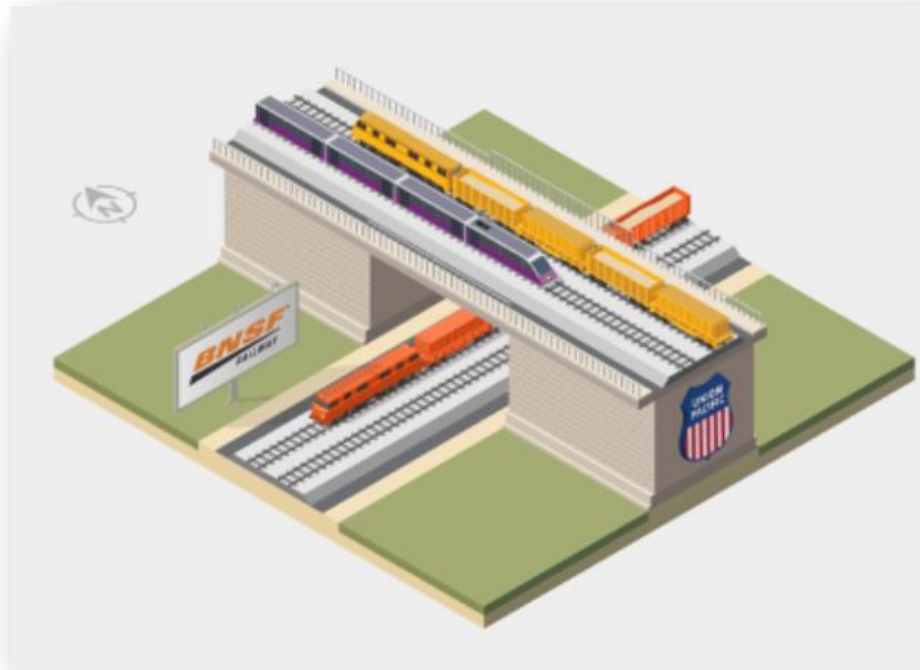


San Joaquin
Joint Powers Authority



CALIFORNIA
High-Speed Rail Authority

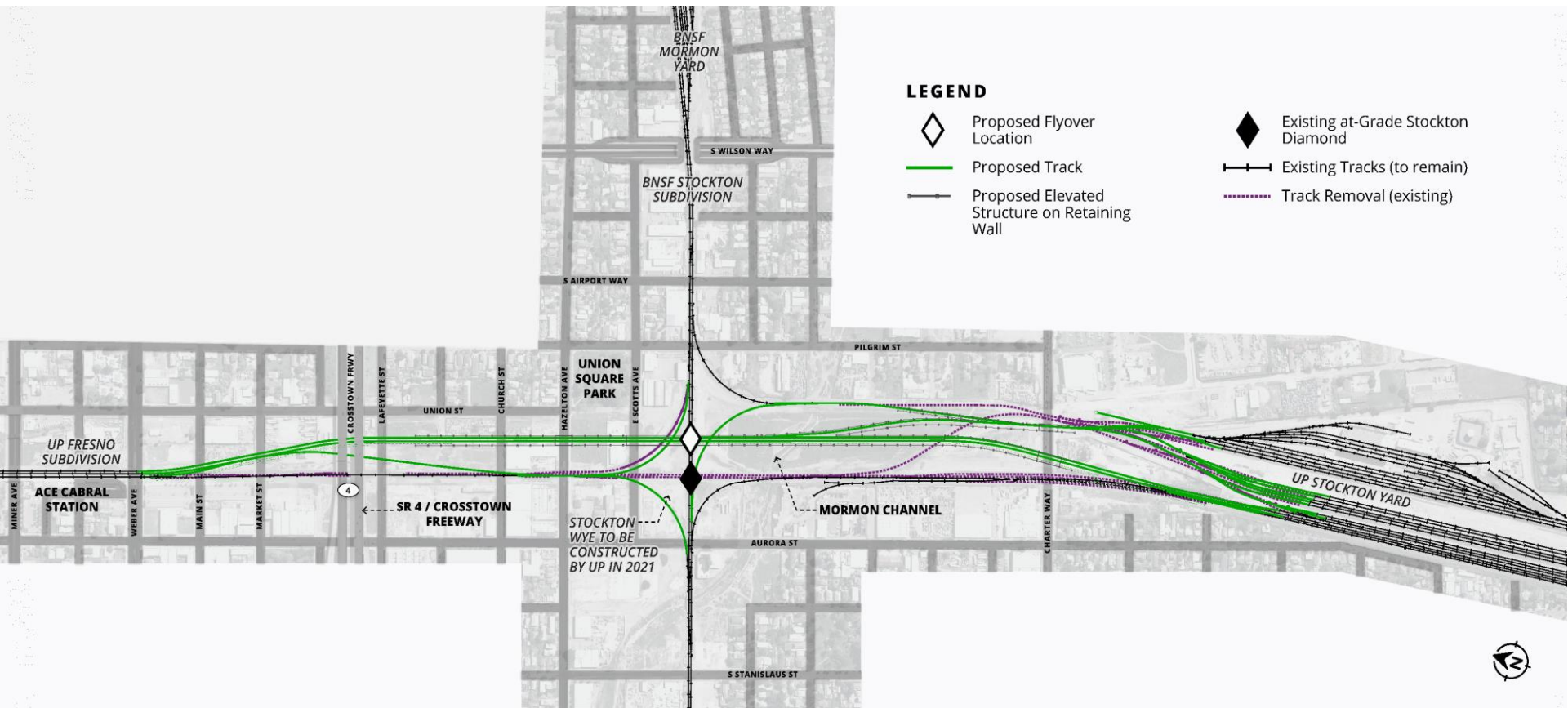




- Grade separation with flyover bridge
 - Uninterrupted rail flow through crossing
- Identification of feasible concepts
 - Partner and stakeholder coordination
- Grade separation concept reviewed for environmental impact
 - Identification of mitigation measures

Unlocking freight & passenger rail mobility in Northern CA

Proposed Flyover Bridge Location



Flyover Concept Examples



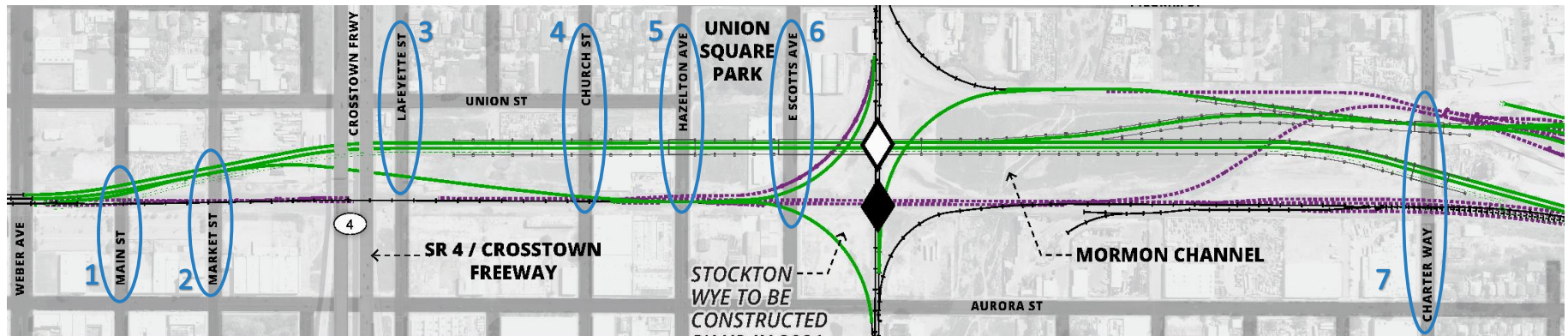
Design & materials to be determined through planning process

Local Road Crossings

- Revised alignment, rail connections and flyover bridge will impact several local east-west city streets
- Currently evaluating grade separation and closures at several crossings
- Changes to local roads to be determined through analysis and input

Potential Local Roadway Modifications:

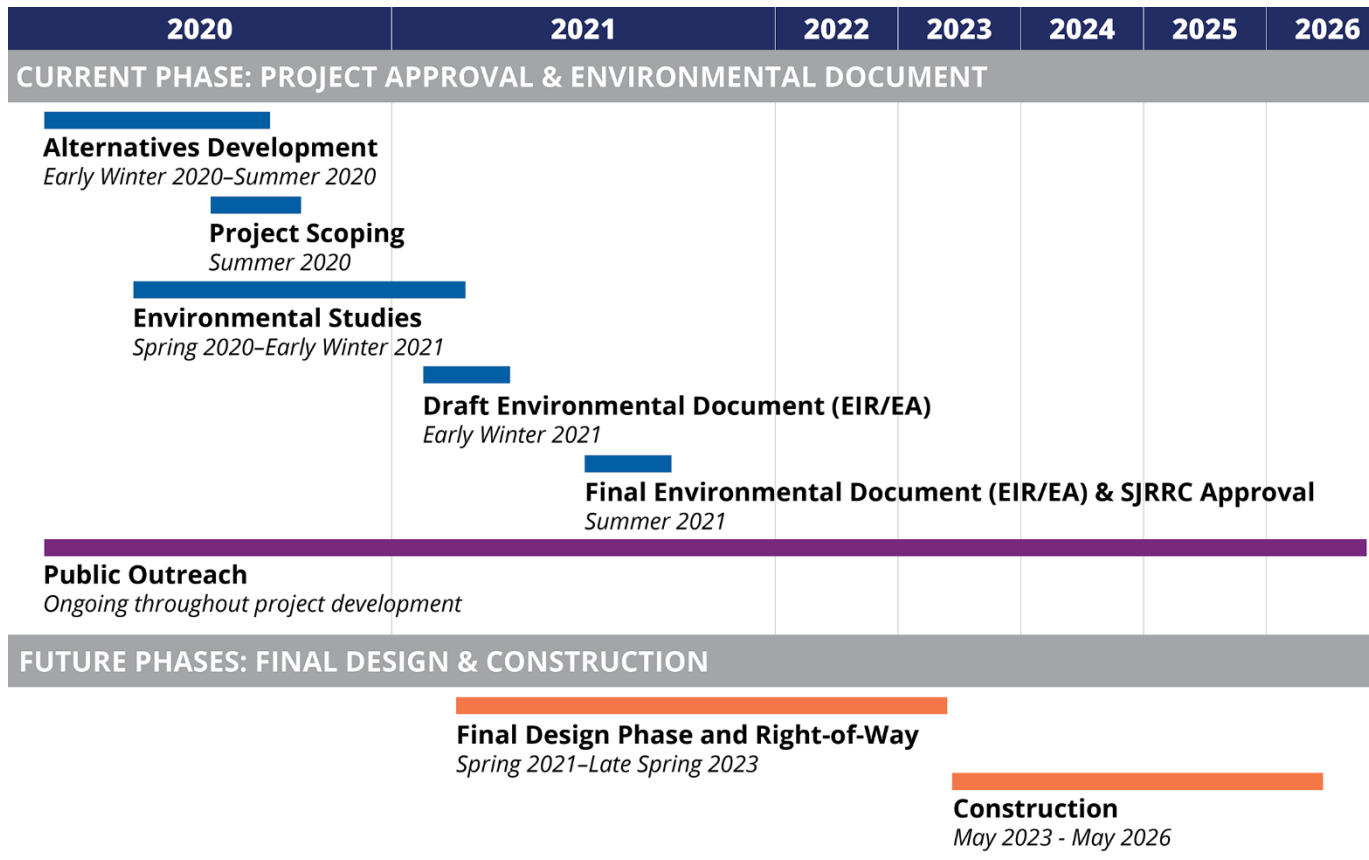
- | | |
|---------------------|---------------------|
| 1. Main Street | 5. Hazelton Avenue |
| 2. Market Street | 6. E. Scotts Avenue |
| 3. Lafayette Street | 7. Charter Way |
| 4. E. Church Street | |



Steps	Activity
1	Notice of Preparation of EIR/EA
2	Scoping & 45-Day Public Comment Period – Virtual Public Meetings
3	Draft EIR/EA Development
4	Draft EIR/EA Minimum 30-day Public Comment Period – Public Meeting
5	Development of FINAL EIR/EA (includes response to comments)
6	SJRRC Board Approval/Adoption – Public Hearing

While the public will be engaged throughout the CEQA/NEPA process, steps 2, 4 & 6 represent formal Public Comment Periods

Current & Future Project Phases





- Project currently estimated to cost \$237 million
- SJRRC working to secure funding from local, state and federal sources to complete project
 - Includes \$100 million in Trade Corridor Enhancement Program funding through California's Senate Bill (SB) 1
 - \$20 million Federal grant from the Better Utilizing Investments to Leverage Development (BUILD) Transportation Discretionary Grants program
- SB 132 and Interregional Transportation Improvement Program funding already secured to match project funds





stocktondiamond.com
(Sign-up to receive electronic updates)



(209) 235-0133



info@stocktondiamond.com

FOLLOW US ON SOCIAL



AltamontCorridorExpress



@ ACE_train



AltamontCorridorExpress



STOCKTON
DIAMOND



San Joaquin
Joint Powers Authority



STOCKTON DIAMOND GRADE SEPARATION PROJECT



San Joaquin Joint Powers Authority

Item 10

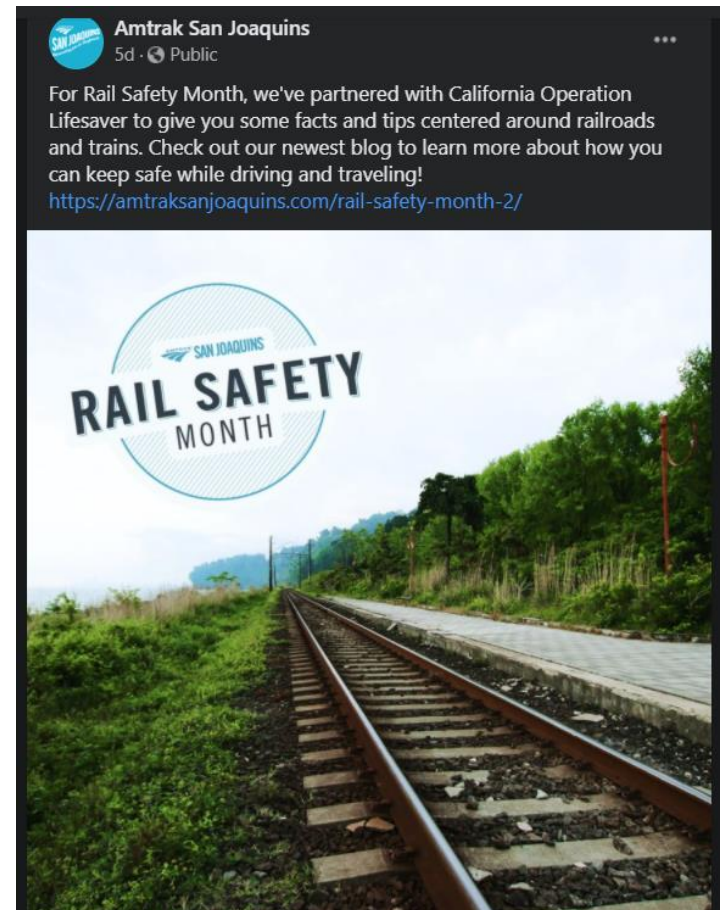
September Rail Safety Month Update

Freddy Rodriguez



San Joaquin Joint Powers Authority

□ Social Media Outreach





San Joaquin Joint Powers Authority



Amtrak San Joaquins

September 4 at 4:36 PM · Public

How Many Lives Can You Save? Stay Alert near railroad tracks. Don't become a statistic! Amtrak San Joaquins supports Operation Lifesaver in its mission to save lives. Take our Rail Safety Pledge by sharing this message. Tag us to show how many you reached!
@CAOperationLifesaver #RailSafetyMonth #RailSafetyWeek #SaveLivesTell5

**EVERY
3 HOURS**

**A PERSON OR VEHICLE
IS HIT BY A TRAIN.**

DON'T BE A STATISTIC



Amtrak San Joaquins

September 18 at 4:25 PM

Fridays are for red! Sport your red all throughout September with Amtrak San Joaquins and California Operation Lifesaver in support of Rail Safety Month! Our own team member, Freddy, has gotten his whole family on board as well! Snap a selfie and tag [California Operation Lifesaver](#) or send an email to caol@caol.us. Share with friends and help us in the mission to save lives!





San Joaquin Joint Powers Authority

Item 11

Executive Director's Report

Stacey Mortensen



San Joaquin Joint Powers Authority

Item 12

Board Member Comments

Chair Chiesa



San Joaquin Joint Powers Authority

Item 13

Adjournment

Chair Chiesa