

Madera Station Project



San Joaquin
Joint Powers Authority

Project Overview

What is the Madera Station Project?

The project includes 2 phases:

- Phase 1 addresses the existing Madera San Joaquins Station, which has extremely low ridership and lacks connecting bus service due to its location nearly three miles north of Madera. The San Joaquin Joint Powers Authority (SJPPA), in coordination with local leaders, will be building a new station near Avenue 12 to better meet regional goals of improving ridership and connectivity.
- Phase 2 expands on Phase 1 to construct a high-speed rail (HSR) station for the HSR initial segment (Merced to Bakersfield).

What has been completed to date?

SJPPA has completed environmental review in accordance with the California Environmental Quality Act (CEQA) to assess and inform the public about potential impacts of the Project. The Final Initial Study/Negative Mitigated Declaration (IS/MND) was approved by the SJPPA Board on January 22, 2021. The Phase 1 project is now in the final design phase. A schedule can be found on the back of this Fact Sheet.

Who is the Lead Agency?

SJPPA manages the San Joaquins rail service and is the CEQA lead agency for this effort. The SJPPA is working closely with the Madera County Transportation Commission, Madera County, City of Madera, the California State Transportation Agency (CalSTA), and the California High-Speed Rail Authority (CHSRA).



Figure 1. Current San Joaquins Route Map



New Station Location

- Approximately 1 mile north of Avenue 12 along the BNSF railroad and HSR corridor, and 2 miles from the Madera Community College Center
- Primarily on publicly-owned land within the Transit Area Specific Plan, which will guide future development in the area and provide opportunity for transit-oriented development
- Close to approved future growth areas of Madera County

Funding

The Phase 1 project is fully funded by a 2018 Transit Intercity Rail Improvement Program (TIRCP) award. For Phase 2, the SJPPA has partnered with Caltrans to apply for a 2022 MEGA grant. Madera County has also received a Sustainable Communities Grant to study the station area, with work starting this year.

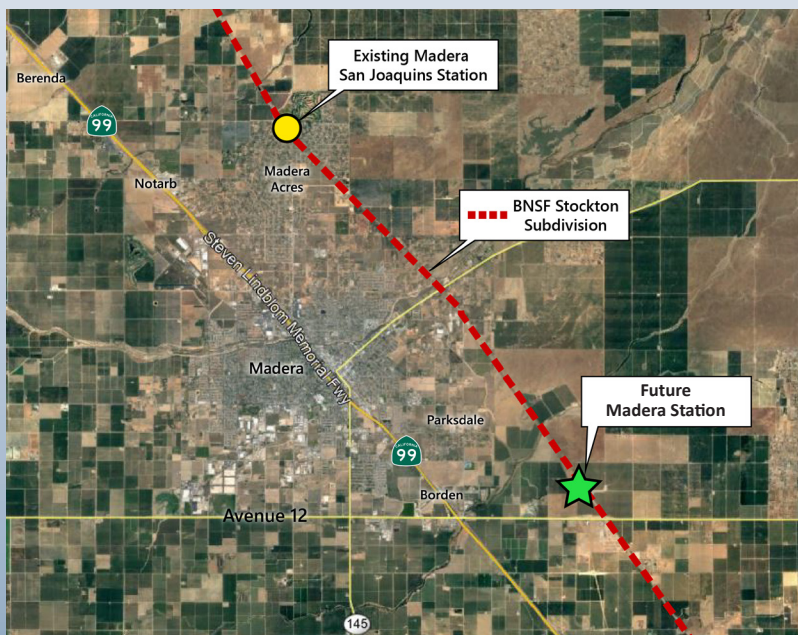


Figure 2. Current and Future Madera Station

Benefits of New Avenue 12 Station Location



Avenue 12 is a primary transit route for Madera County



Excellent access to State Route 99 with a recently updated interchange at Avenue 12 while continuing to provide access to central Madera with similar travel times



Improves access times for riders from neighborhoods in southern Madera County



Accommodates anticipated growth in southeast Madera County and north Fresno



Supports transit-oriented development (TOD) as part of the Transit Area Specific Plan being conducted by Madera County, which will guide design and land use in the surrounding areas

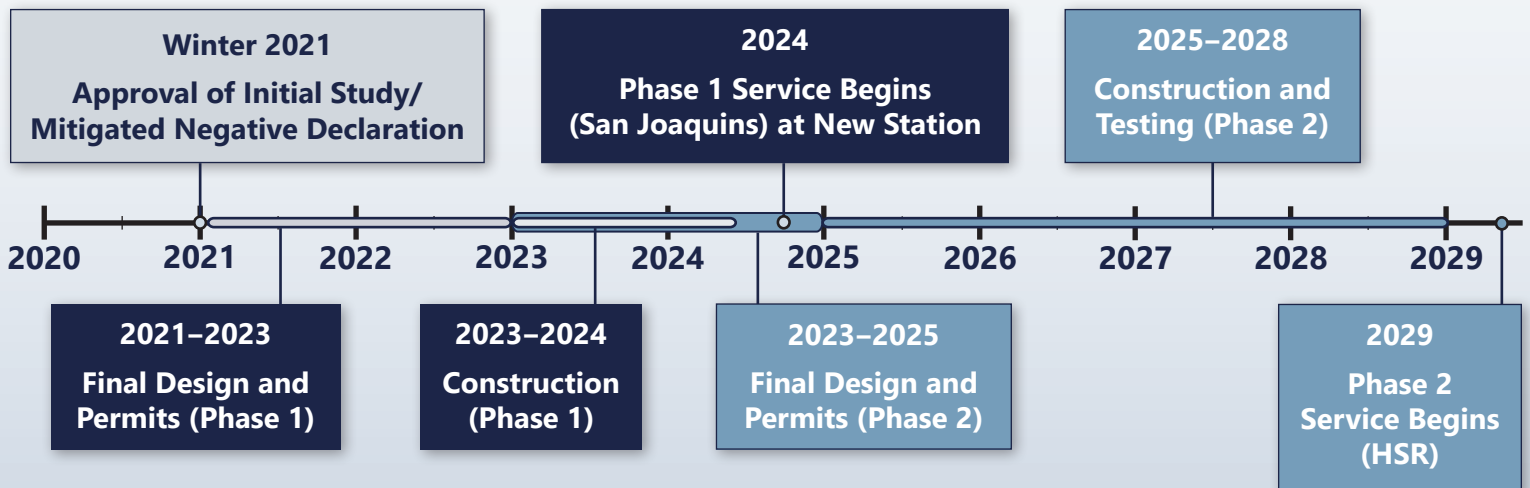


Location near Madera Community College Center will allow easy access for staff, students, and visitors



Will enable future high-speed rail service to access the Madera Station

What is the anticipated timeline for the Madera Station?



For More Information

Visit the website below to view additional project materials:

www.sjjpa.com/madera-station-relocation-project

Stay Connected

Join SJJPA on our social media platforms for the most up to date information.



facebook.com/AmtrakSanJoaquins



[@SanJoaquins](https://twitter.com/SanJoaquins)

Contact:

Dan Leavitt

Manager of Regional Initiatives

San Joaquin Joint Powers Authority

dan@sjjpa.com

(209) 944-6266



San Joaquin
Joint Powers Authority