



San Joaquin Joint Powers Authority

Madera Station Relocation Project

(Initial Study / Mitigated Negative Declaration)

Project Webinar

May 14, 2020

(2:00-3:00pm / 6:00-7:00pm)

(Note: This document contains minor clarification updates since it was presented at the May 14th public webinars.)



San Joaquin Joint Powers Authority

Welcome, Introductions, and Meeting Goals



San Joaquin Joint Powers Authority

Opening Remarks



Introduction from Madera County
Supervisor Brett Frazier



San Joaquin Joint Powers Authority

Presenters



Dan Leavitt

Manager of Regional Initiatives
San Joaquin Joint Powers Authority



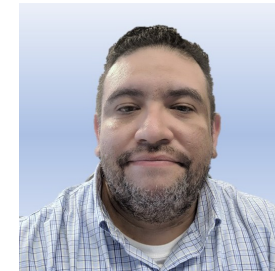
Daniel Krause

Project Manager
AECOM



Daniel Hartman

Project Engineer
AECOM



Jaime Guzman

CEQA Lead
AECOM



San Joaquin Joint Powers Authority

Agenda

- I. Project Background and History
- II. Project Benefits
- III. Proposed Relocated Madera Station Site Plans
- IV. Environmental Review Process
- V. Questions and Answers



San Joaquin Joint Powers Authority

Project Background and History



San Joaquin Joint Powers Authority

Project Background

- San Joaquin Joint Powers Authority (SJIPA), which is the managing agency for the San Joaquins Rail Service (“San Joaquins”), is the Lead Agency in pursuing this project.
- SJIPA has a goal to improve service and performance of the San Joaquins.
- The Madera Station Relocation Project will relocate the station to a site at Avenue 12.



San Joaquin Joint Powers Authority

Project Background

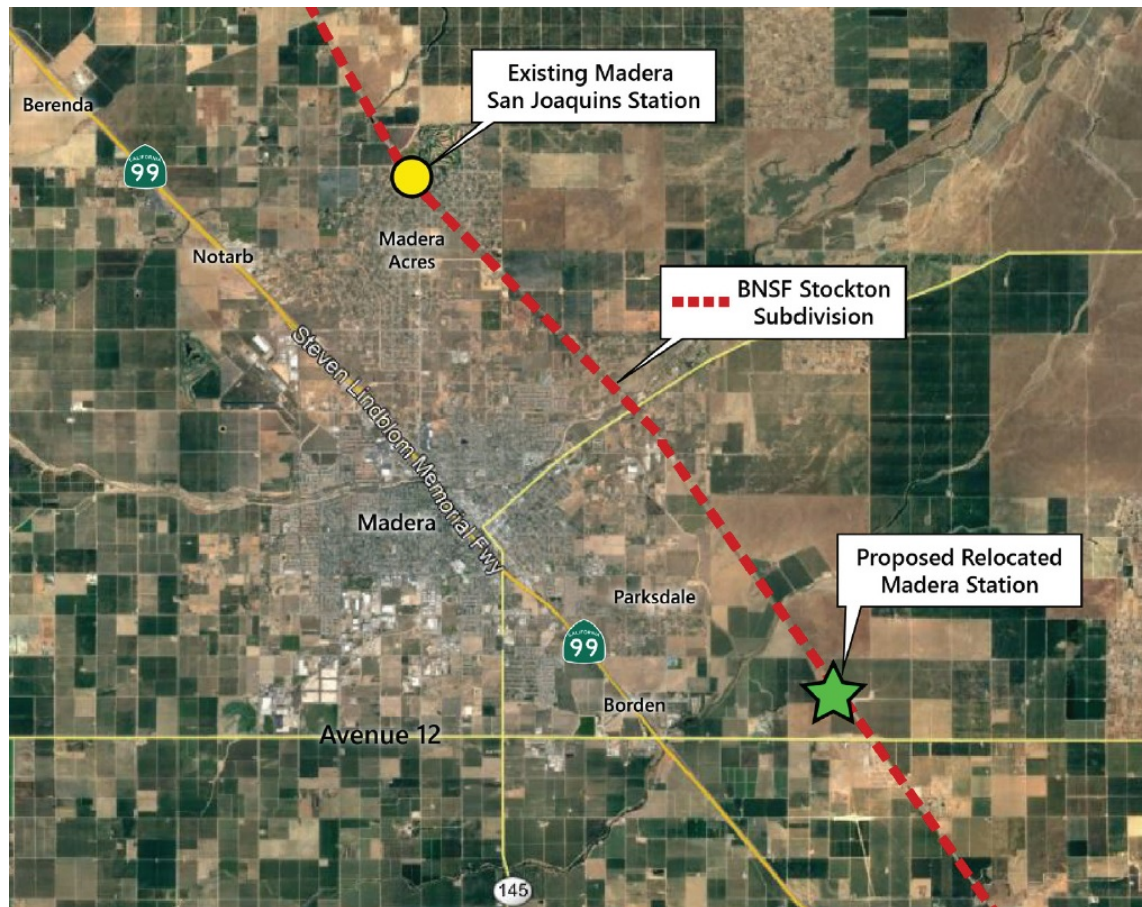


- San Joaquin System Map



San Joaquin Joint Powers Authority

Project Background



- Existing Madera San Joaquin Station located in vicinity of Madera Acres
- Proposed Station located just north of Avenue 12 along the existing BNSF tracks



San Joaquin Joint Powers Authority

Project History – How Did We Get Here?

- In late 2016, SJJPA analysis identified Madera Station as lacking any public transportation connections.
- Additional analysis showed poor access to SR 99, very low ridership, and limited transit-oriented development potential .
- It was determined that the station location was a major contributing factor for the lack of connectivity and low ridership.





San Joaquin Joint Powers Authority

Project History – How Did We Get Here?

- In late 2016, SJJPA staff began meeting with Madera CTC, Madera County, the City of Madera, CalSTA, and the CHSRA to review the negative issues associated with the existing Madera Acres Station location and to discuss the possibility of moving the Madera Station to a better location.
- The result of these meetings led to a determination that Avenue 12 is the best location for meeting the goals of the region and SJJPA.



San Joaquin Joint Powers Authority

Project History – How Did We Get Here?

The Avenue 12 location has the following advantages:

- Excellent connectivity to SR 99 due to a new interchange at Route 99/Avenue 12 recently completed and planned further improvements to Avenue 12.
- Two existing bus lines already run along Avenue 12, providing great public transportation access to the new station.
- Central to the fast growing region of Madera County.
- Within the Madera State Center Community College (SCCC) Specific Plan, which envisions TOD in the immediate station area.



San Joaquin Joint Powers Authority

Project History – How Did We Get Here?

- Through its formal 2017 Business Plan process, SJJPA identified the desire to relocate the Madera Station away from Madera Acres as a key goal.
- The intention to relocate the Madera Station was first presented at the January 27, 2017 SJJPA Board Meeting as part of the discussion of key new items proposed to be included in the Draft 2017 Business Plan.
- At the May 26, 2017 SJJPA Board Meeting, SJJPA approved their Final 2017 Business Plan, and identified Avenue 12 as the preferred location for the Relocated Madera Station.



San Joaquin Joint Powers Authority

Project History – How Did We Get Here?

Funding for the Project

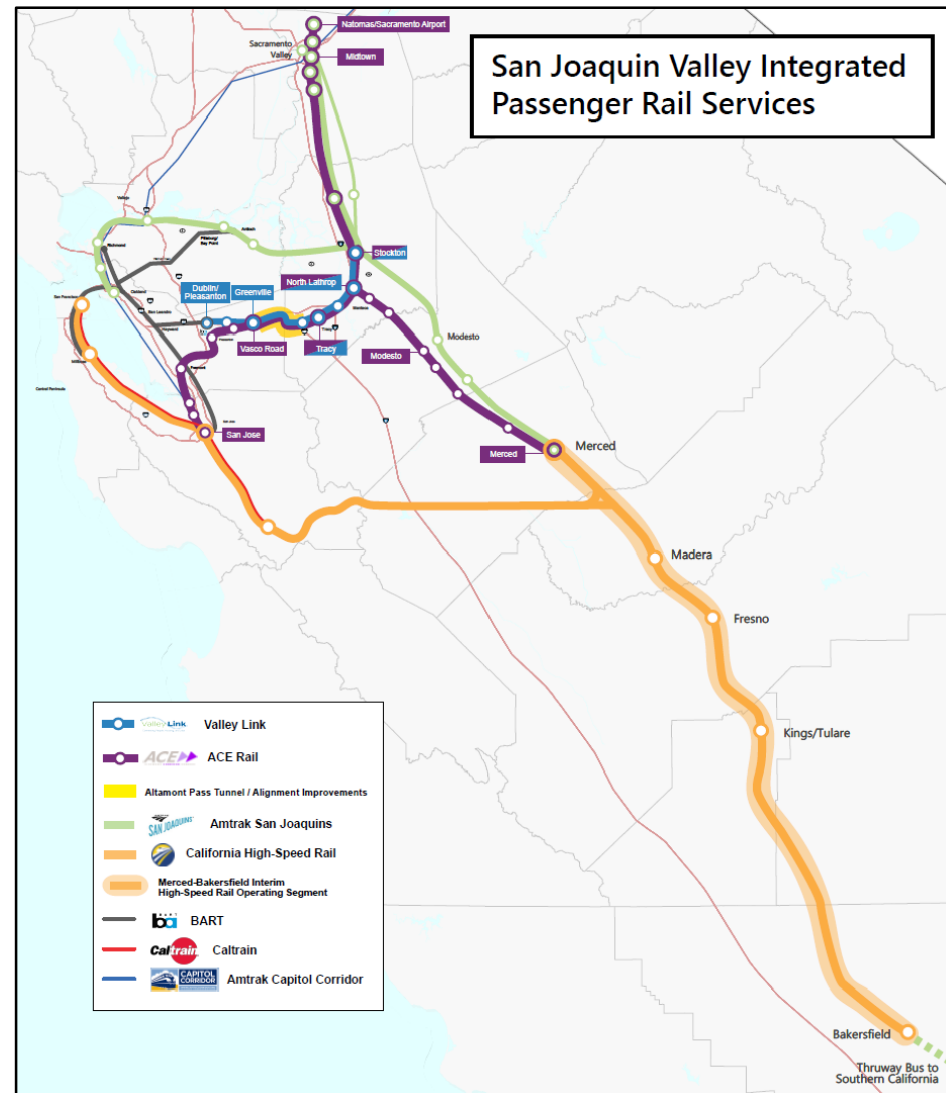
- In January 2018, SJJPA submitted an application for a grant as part of the State of California's Transit and Intercity Rail Capital Program (TIRCP).
 - The TIRCP was strongly supported by Madera County, Madera CTC, and Councilmember Oliver.
- A TIRCP grant was awarded on April 26, 2018, which included \$26 million to relocation of Madera San Joaquins Station to the Avenue 12 site.



San Joaquin Joint Powers Authority

Integration with High-Speed Rail

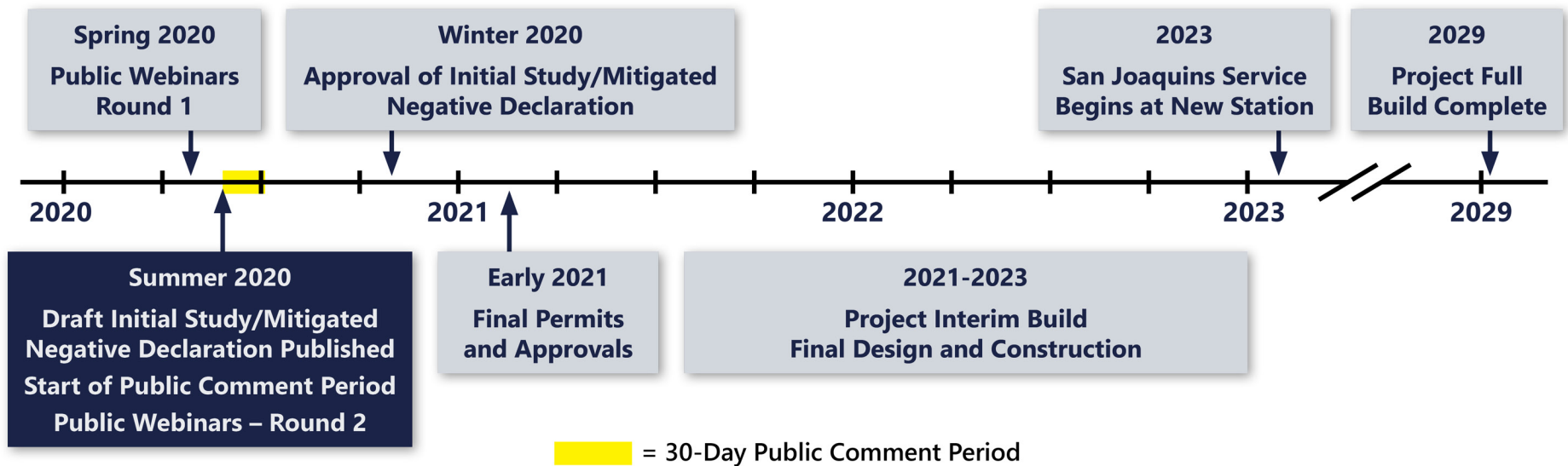
- By 2028/29, San Joaquin's service is planned to terminate in Merced, once high-speed rail service is operating.
- This project includes environmental clearance of facilities needed to enable this station to be served by high-speed rail as part of the interim operating segment.





San Joaquin Joint Powers Authority

Project Timeline





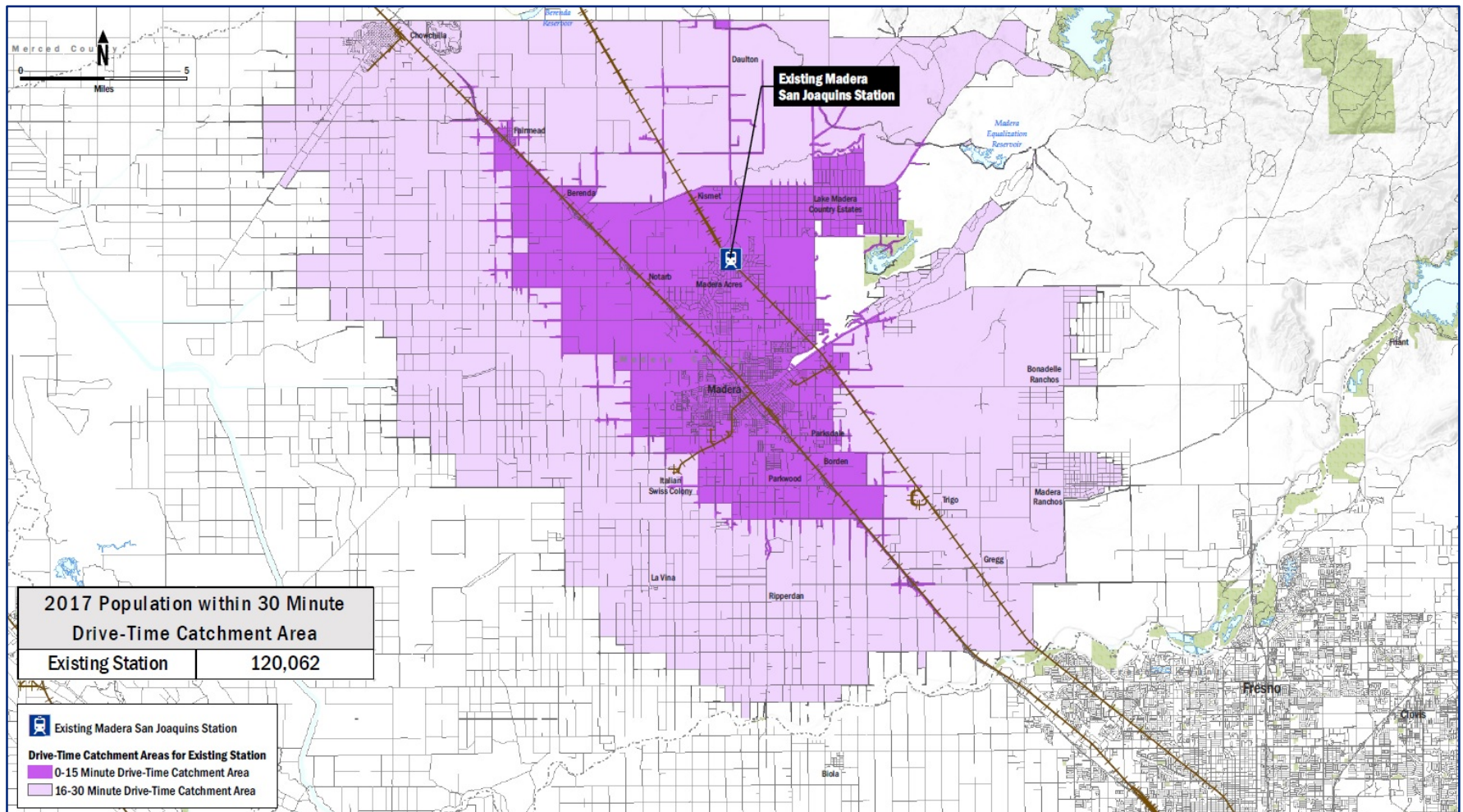
San Joaquin Joint Powers Authority

Project Benefits



San Joaquin Joint Powers Authority

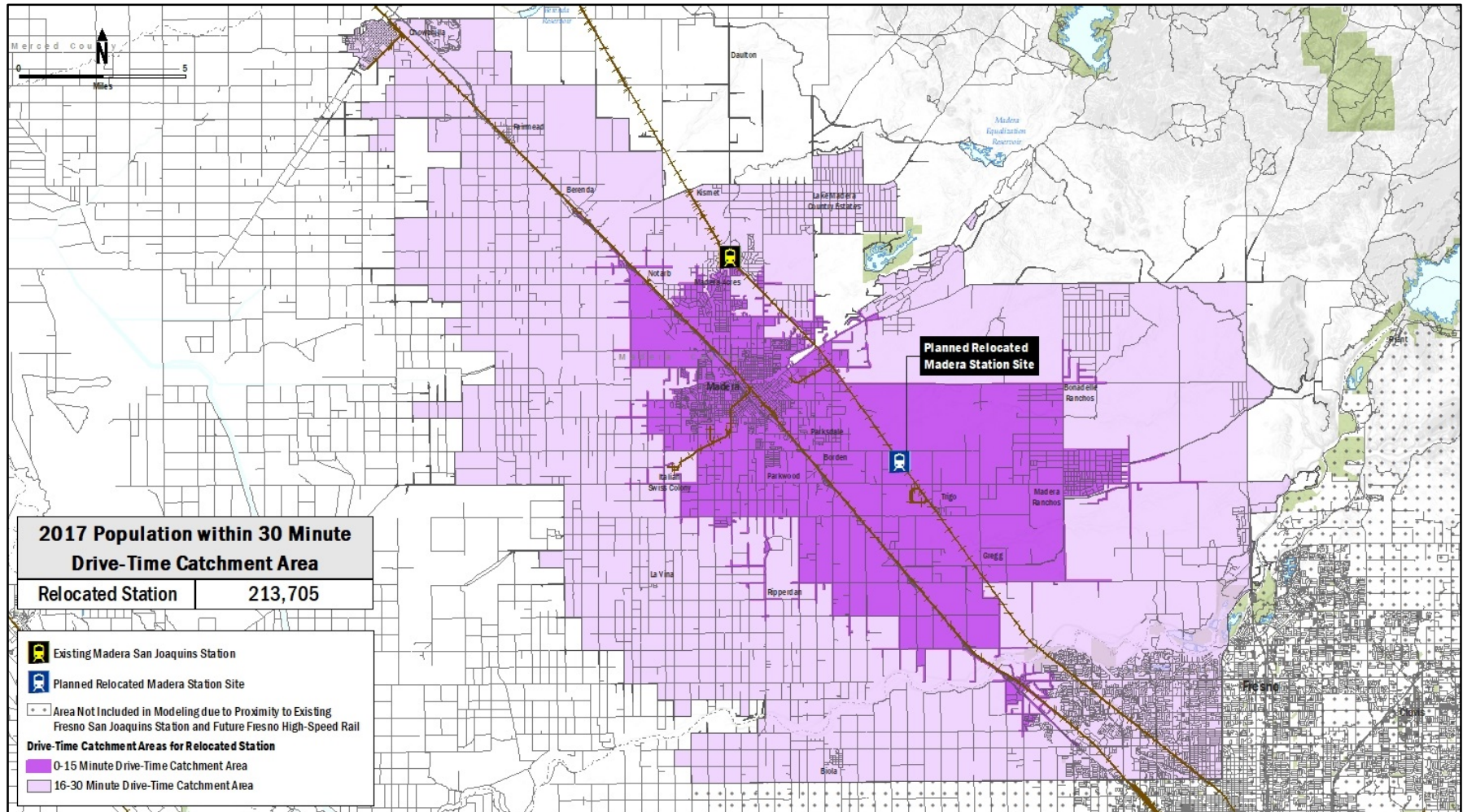
Catchment Area Analysis – Existing Station





San Joaquin Joint Powers Authority

Catchment Area Analysis – Proposed Station





San Joaquin Joint Powers Authority

Station Located Near College

- The Avenue 12 station site is also located very near the Madera Community College Center.
- Site is also located within the boundaries of the State Center Community College Specific Plan, which provides Transit-Oriented Development opportunities in the vicinity of the station.





San Joaquin Joint Powers Authority

Transit Access

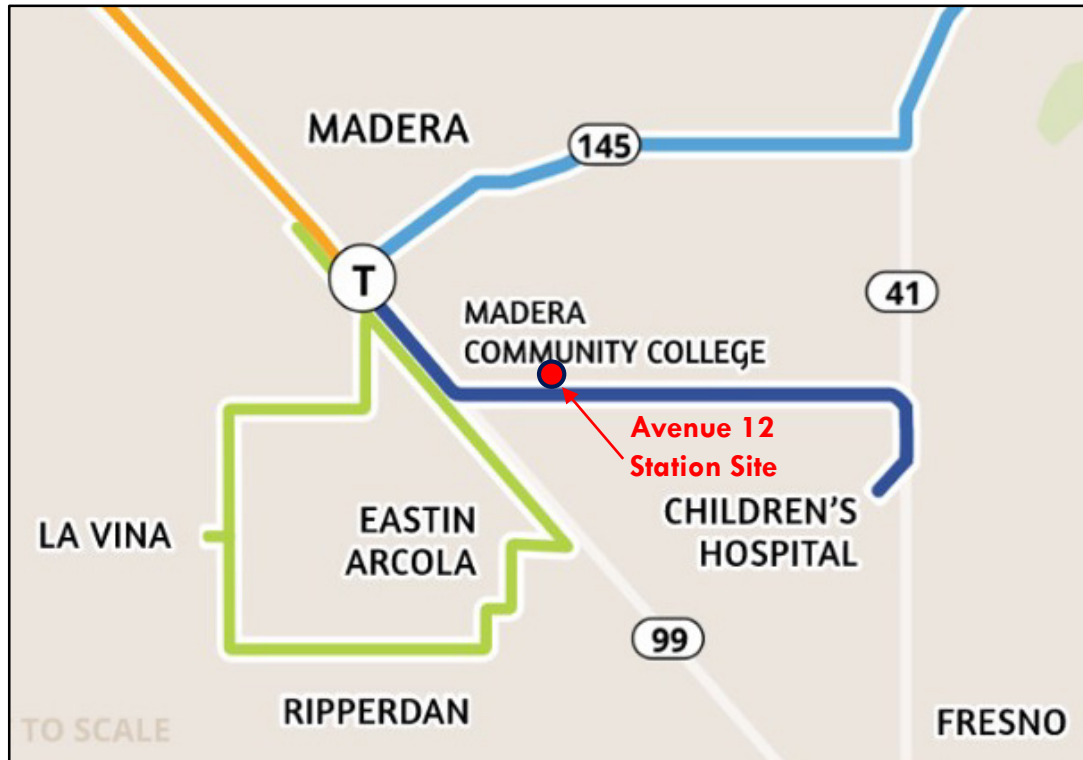


Image Source: Madera County Connection (<http://mcctransit.com/>)

Bus Routes Serving Avenue 12 Corridor

- Madera County Connection's (MCC) "College Route" runs 5 roundtrips a day (M-F)
- Madera Area Express's (MAX) "Route 3" runs throughout the day to Madera Community College Center from central Madera



San Joaquin Joint Powers Authority

Automobile Access



Image Source: Google Maps

Recently Completed Upgrades

- Interchange Upgrade at SR 99 and Avenue 12
- Avenue 12 widening (from 2 to 4 lanes) between SR 99/Rd 30 ½

Upgrades Under Construction

- Grade separation of Avenue 12 at the BNSF tracks and future HSR tracks + 4 lanes



San Joaquin Joint Powers Authority

Automobile Access

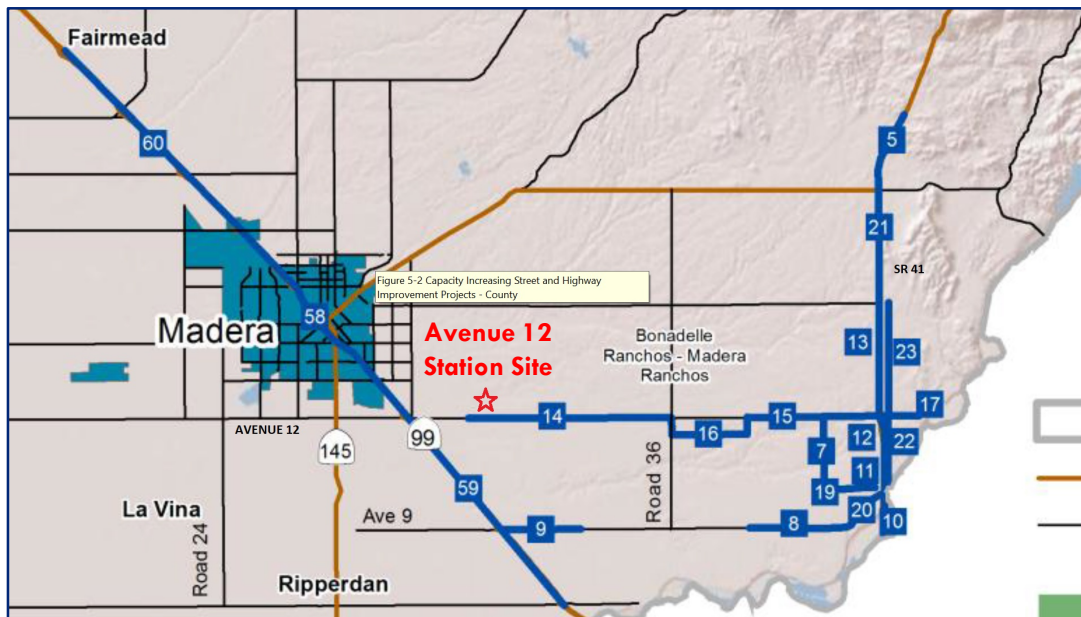


Image Source: MCTC 2018 Regional Transportation Plan/
Sustainable Communities Strategies - Amendment No.1
(Image includes annotations to original image)

Planned Upgrades to Avenue 12 (by 2030)

- Expansion from 2 to 4 lanes between Road 30 ½/Road 36 (#14)
- Expansion from 2 to 4 lanes between Road 38/SR 41 (#15)
- Avenue 12 By-Pass between Road 36/Road 38 (#16)

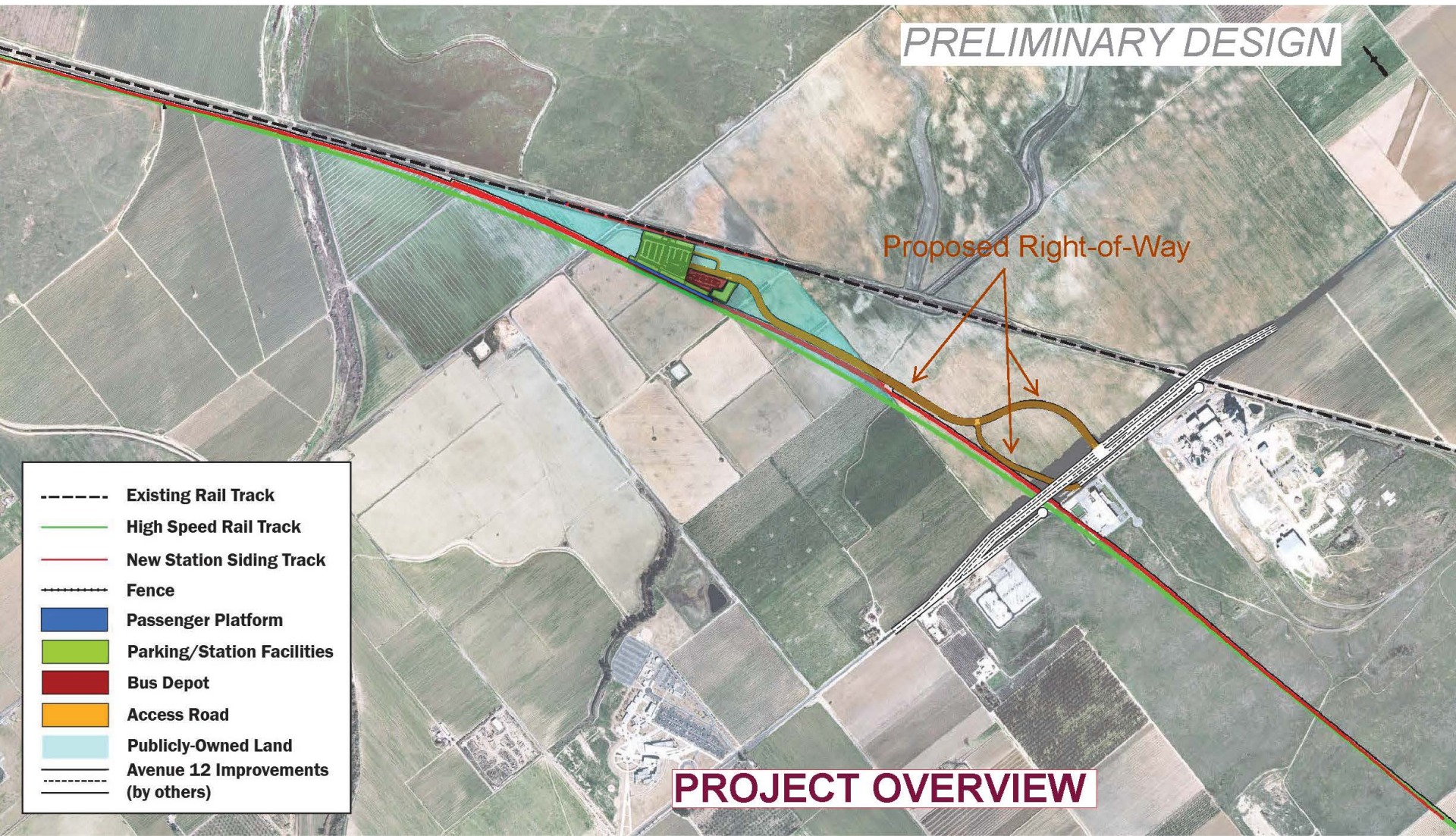


San Joaquin Joint Powers Authority

Proposed Relocated Madera Station Site Plans



San Joaquin Joint Powers Authority



PRELIMINARY DESIGN

Proposed Right-of-Way

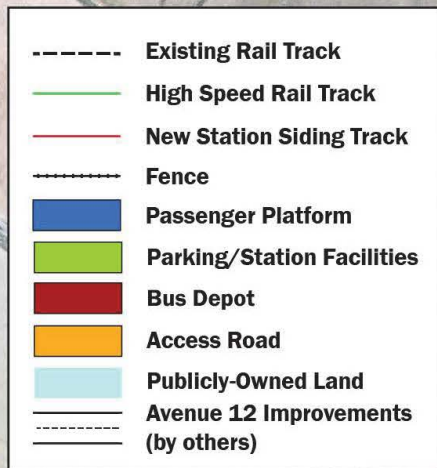
- Existing Rail Track
- High Speed Rail Track
- New Station Siding Track
- Fence
- Passenger Platform
- Parking/Station Facilities
- Bus Depot
- Access Road
- Publicly-Owned Land
- Avenue 12 Improvements (by others)

PROJECT OVERVIEW



San Joaquin Joint Powers Authority

PRELIMINARY DESIGN



Proposed Right-of-Way

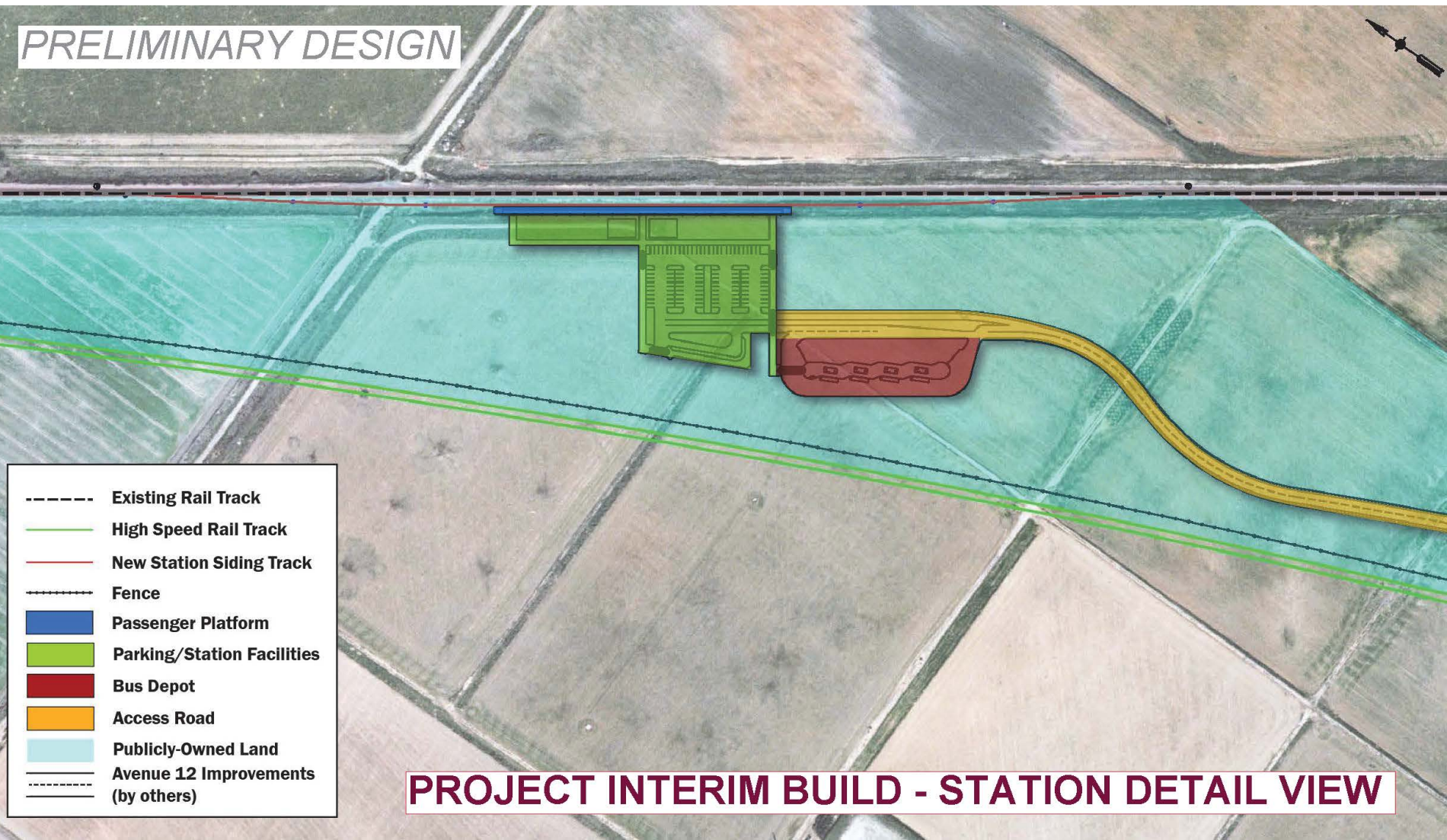
Elevated New Ave 12
Ave 12

PROJECT INTERIM BUILD



San Joaquin Joint Powers Authority

PRELIMINARY DESIGN

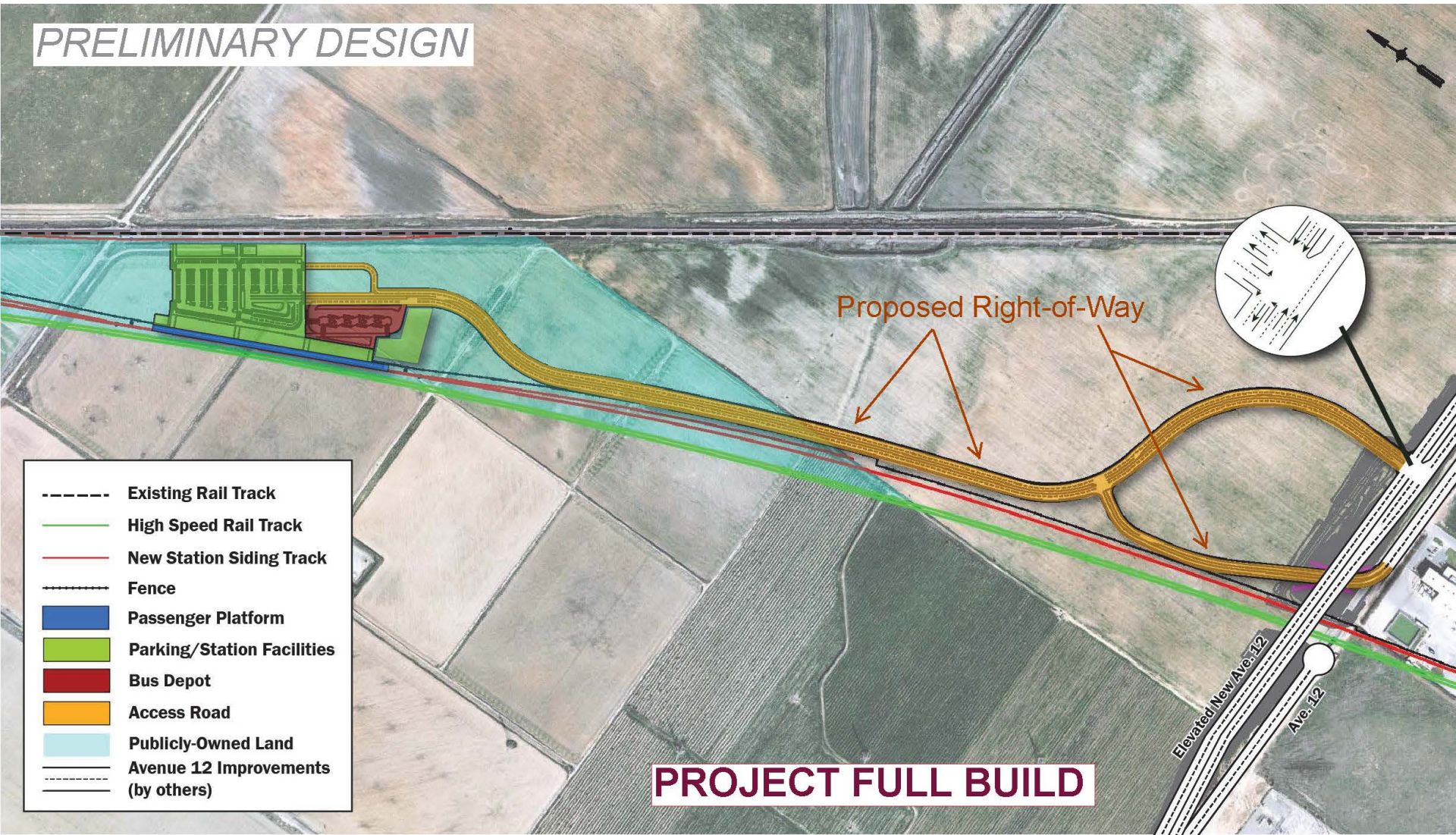


PROJECT INTERIM BUILD - STATION DETAIL VIEW



San Joaquin Joint Powers Authority

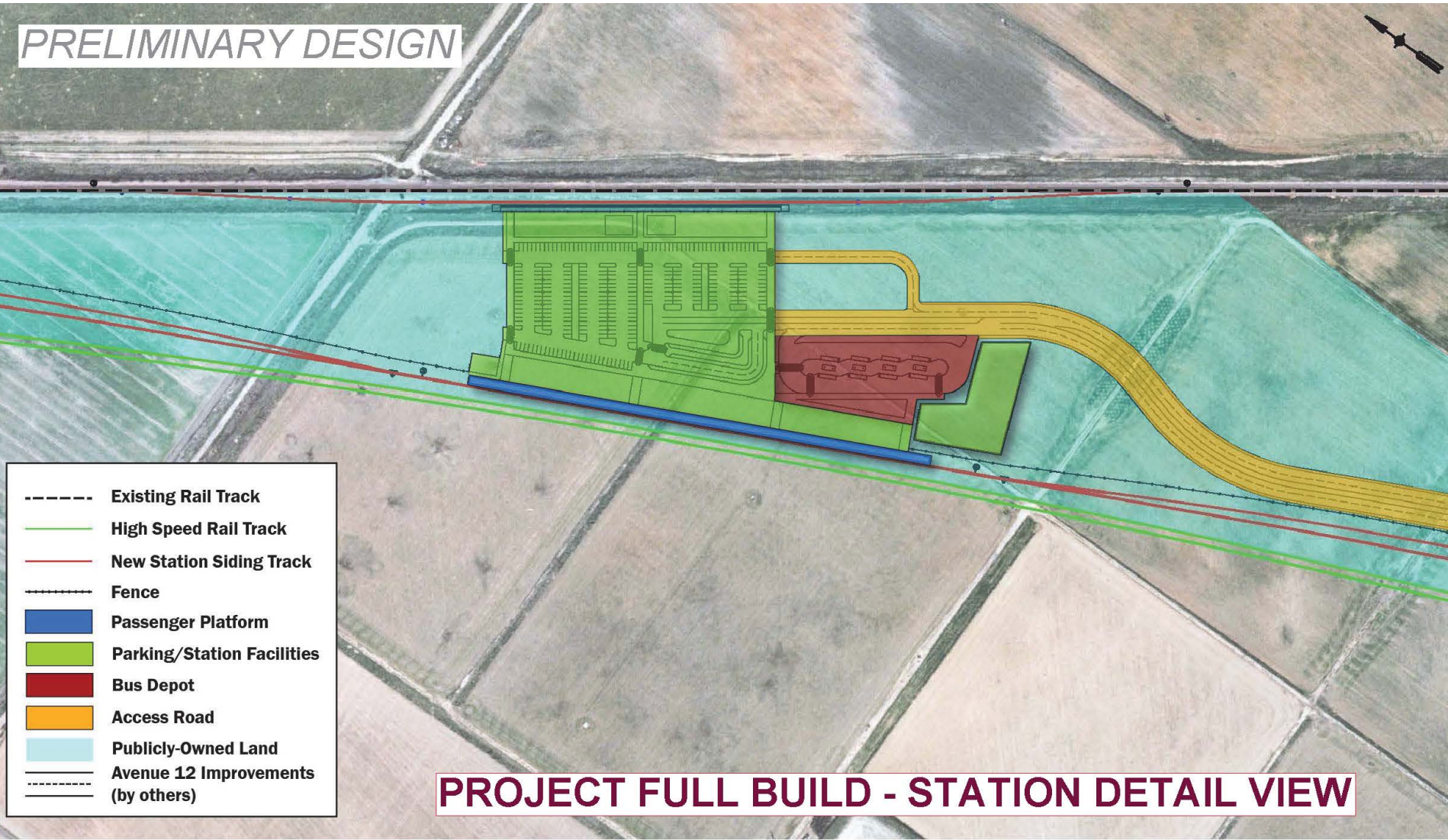
PRELIMINARY DESIGN





San Joaquin Joint Powers Authority

PRELIMINARY DESIGN



- Existing Rail Track
- High Speed Rail Track
- New Station Siding Track
- Fence
- Passenger Platform
- Parking/Station Facilities
- Bus Depot
- Access Road
- Publicly-Owned Land
- Avenue 12 Improvements (by others)

PROJECT FULL BUILD - STATION DETAIL VIEW



San Joaquin Joint Powers Authority

Environmental Review Process



San Joaquin Joint Powers Authority

Environmental Process

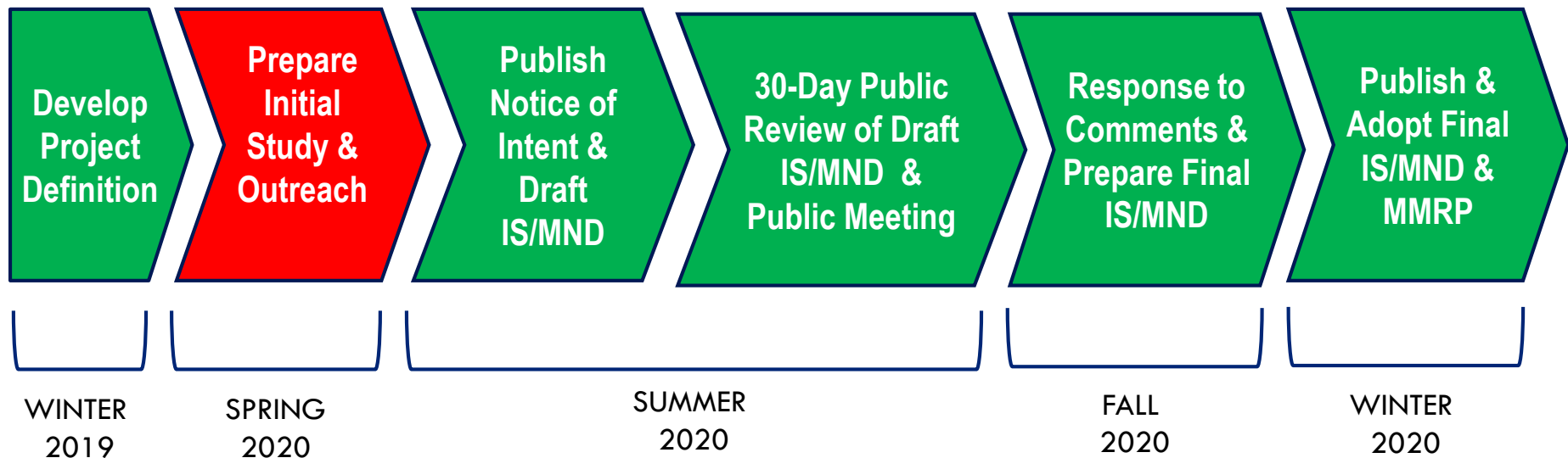
- Project requires compliance with the California Environmental Quality Act (CEQA)
- Environmental document used by other agencies for issuing permits
- Process to determine adequate environmental document
- San Joaquin Joint Powers Authority is the Lead Agency
- California High-Speed Rail Authority is a Responsible Agency
- Public input is important part of the process



San Joaquin Joint Powers Authority

Environmental Process

Initial Study and Mitigated Negative Declaration





San Joaquin Joint Powers Authority

Environmental Process

Topics to be Evaluated in Initial Study

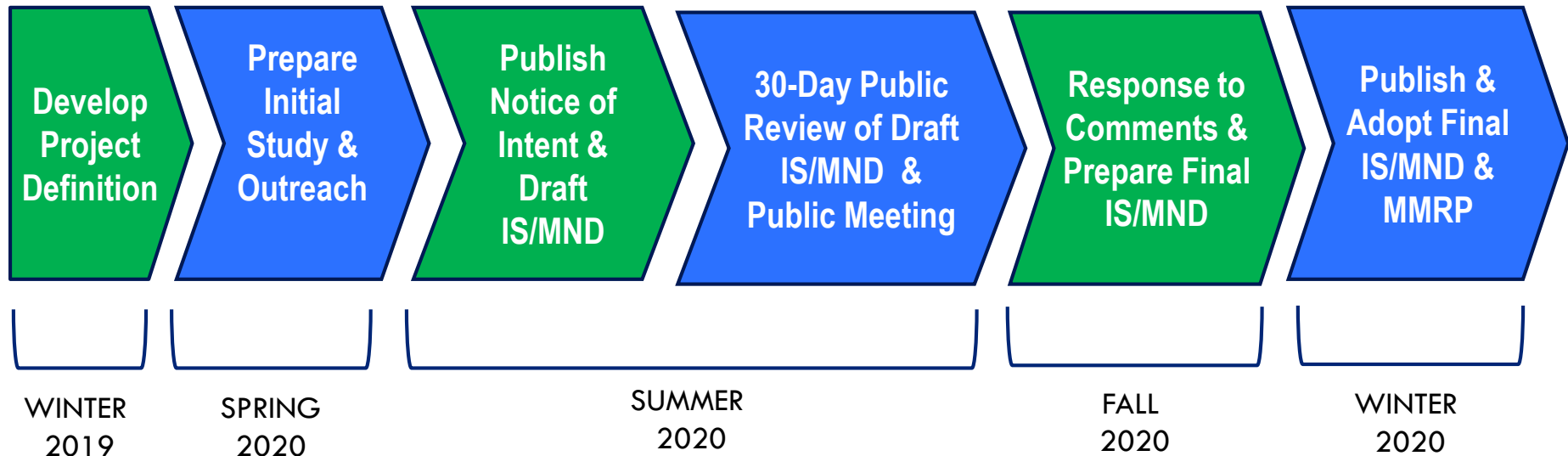
- Aesthetics & Visual Quality
- Agriculture & Forestry Resources
- Air Quality
- Biological Resources
- Cultural Resources
- Energy
- Geology, Soils, Seismicity & Paleontological Resources
- Greenhouse Gases
- Hazards & Hazardous Materials
- Hydrology & Water Resources
- Land Use & Development
- Mineral Resources
- Noise & Vibration
- Population & Housing
- Public Services
- Recreation
- Transportation
- Tribal Resources
- Utilities & Service Systems
- Wildfires
- Mandatory Findings of Significance



San Joaquin Joint Powers Authority

Environmental Process

Opportunities for Public Input





San Joaquin Joint Powers Authority

For more information, visit the project webpage at:

<https://sjjpa.com/madera-station-relocation-project/>

Questions?

**Contact SJJPA's Madera Station Relocation
Project Manager:**

Dan Leavitt, Manager of Regional Initiatives
San Joaquin Joint Powers Authority

dan@sjjpa.com
(209) 944-6266



San Joaquin Joint Powers Authority

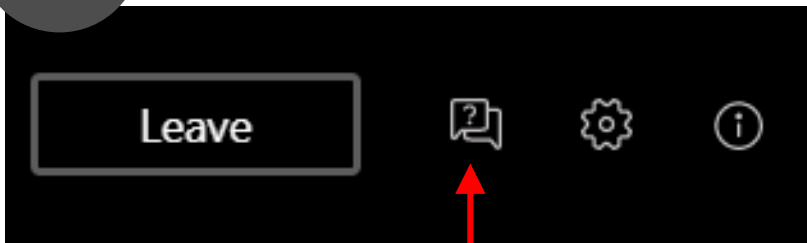
Questions and Answers



San Joaquin Joint Powers Authority

Questions?

1.



Click this icon in the top- right corner of your screen

Note:

Questions asked during this webinar will be considered but are not official comments. An official public comment period will take place following the publication of the Draft Initial Study/Mitigated Negative Declarations.

2.

Enter your questions here:



San Joaquin Joint Powers Authority

Thank you!

For more information, visit the project webpage at:

<https://sjjpa.com/madera-station-relocation-project/>

Questions?

**Contact SJJPA's Madera Station Relocation
Project Manager:**

Dan Leavitt, Manager of Regional Initiatives
San Joaquin Joint Powers Authority

dan@sjjpa.com
(209) 944-6266