

Madera High-Speed Rail Station Project



San Joaquin
Joint Powers Authority

Project Overview

What is the Madera High-Speed Rail Station Project?

The project will construct a new station in Madera County for California's Interim High-Speed Rail (HSR) Service between Merced and Bakersfield. Located along Avenue 12, the station will provide Madera County with direct access to HSR service and better connect it with Fresno, the larger Central Valley region, and the rest of California. Future transit-oriented development along the Avenue 12 Corridor, together with improved transit connectivity, will ensure that Madera County can capture the full economic and environmental benefits of HSR and sustainable growth patterns.

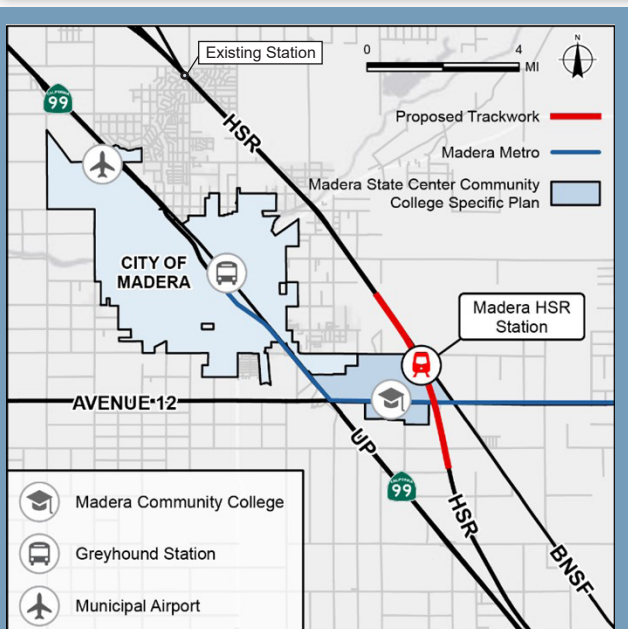
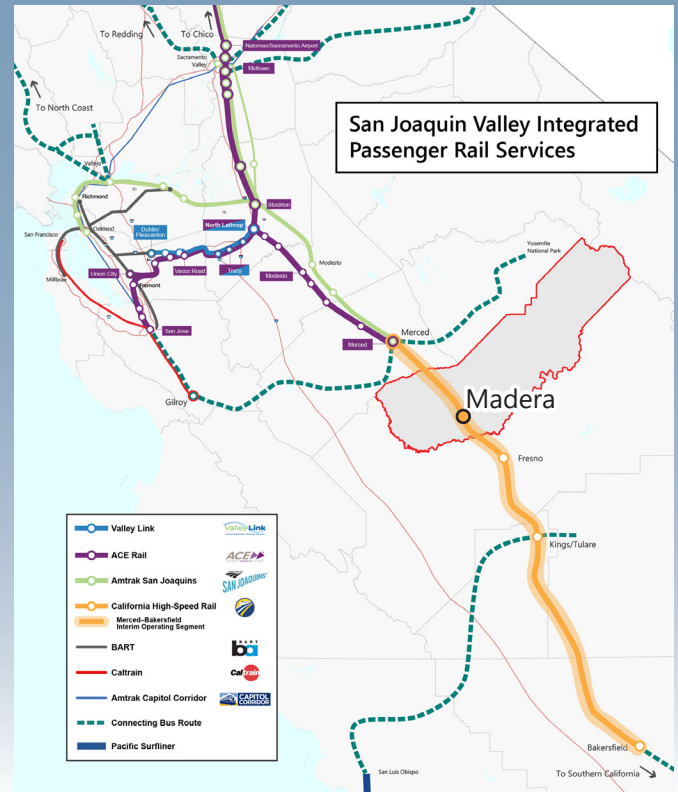
Madera County received a Sustainable Communities Grant from Caltrans to develop a new Transit Area Specific Plan focusing on the Avenue 12 Corridor that is expected to begin in late 2022.

What has been completed to date?

SJPPA completed environmental review for the improvements needed for the Madera HSR Station for Interim Service in accordance with the California Environmental Quality Act (CEQA) on January 22, 2021.

Who is the Lead Agency?

SJPPA manages the San Joaquin rail service and is expected to be the Operating Agency for HSR Interim Service. SJPPA is responsible for implementing the improvements needed for the Madera HSR Station. SJPPA is working in partnership with the Madera County Transportation Commission, Madera County, City of Madera, Caltrans, the California State Transportation Agency (CalSTA), and the California High-Speed Rail Authority (CHSRA).



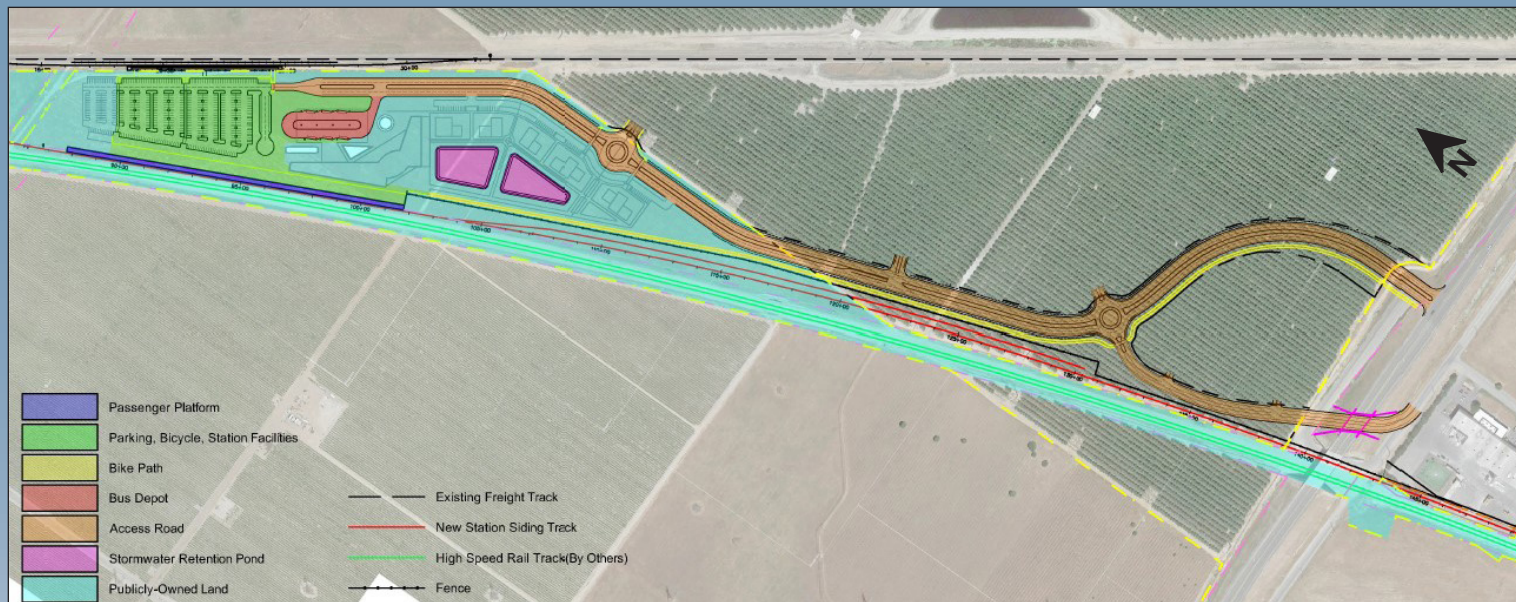
Funding

In partnership with SJPPA, Caltrans will submit a joint application by May 23, 2022 for a 2022 MEGA grant for the improvements needed for the Madera HSR Station for Interim Service. The State will be providing the necessary matching funding for the MEGA grant.








New Station Location

- Approximately 1 mile north of Avenue 12 along the BNSF railroad and HSR corridor, and 2 miles from the Madera Community College Center
- Primarily on publicly-owned land within the Transit Area Specific Plan, which will guide future development in the area and provide opportunity for transit-oriented development
- Close to approved future growth areas of Madera County

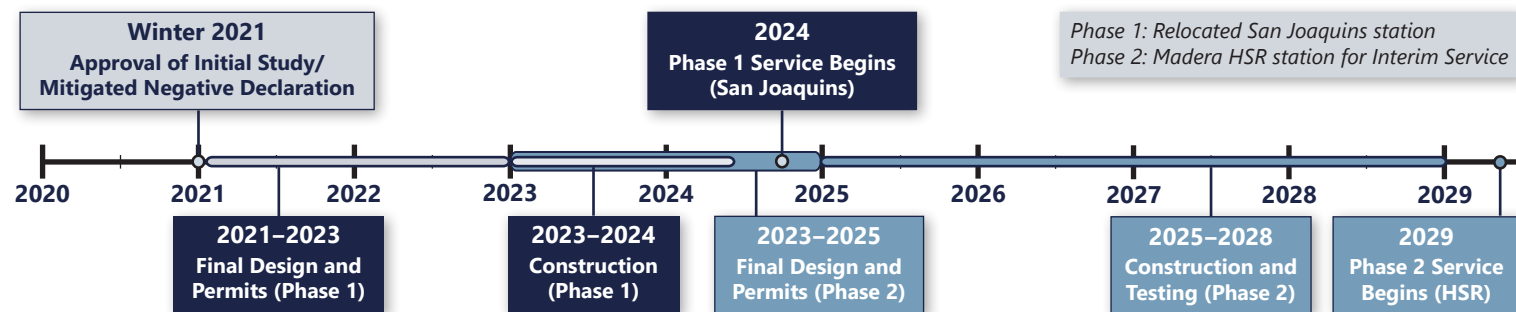
Station Site Plan



Benefits of New Avenue 12 Station Location

-  Avenue 12 is a primary transit route for Madera County
-  Excellent access to State Route 99 with a recently updated interchange at Avenue 12 while continuing to provide access to central Madera with similar travel times
-  Improves access times for riders from neighborhoods in southern Madera County
-  Accommodates anticipated growth in southeast Madera County and north Fresno
-  Supports transit-oriented development (TOD) as part of the Transit Area Specific Plan being conducted by Madera County, which will guide design and land use in the surrounding areas
-  Location near Madera Community College Center will allow easy access for staff, students, and visitors
-  Will enable future high-speed rail service to access the Madera Station

What is the anticipated timeline for the Madera Station?



For More Information

Visit the website below to view additional project materials:
www.sjjpa.com/madera-station-relocation-project

Stay Connected

Join SJJPA on our social media platforms for the most up to date information.

 facebook.com/AmtrakSanJoaquins

 @SanJoaquins

Contact:

Dan Leavitt
 Manager of Regional Initiatives
 San Joaquin Joint Powers Authority
dan@sjjpa.com
 (209) 944-6266

