

Phase 3

What is Phase 3?

Phase 3 completes the full build-out of the station, allowing for expanded High-Speed Rail (HSR) operations beyond the Merced-Bakersfield Early Operating Segment (EOS) and supporting the extension of HSR. As part of Phase 3, a second HSR platform will be constructed on the west side of the HSR alignment, along with a pedestrian overpass and expanded parking facilities.

What's Next for Phase 3?

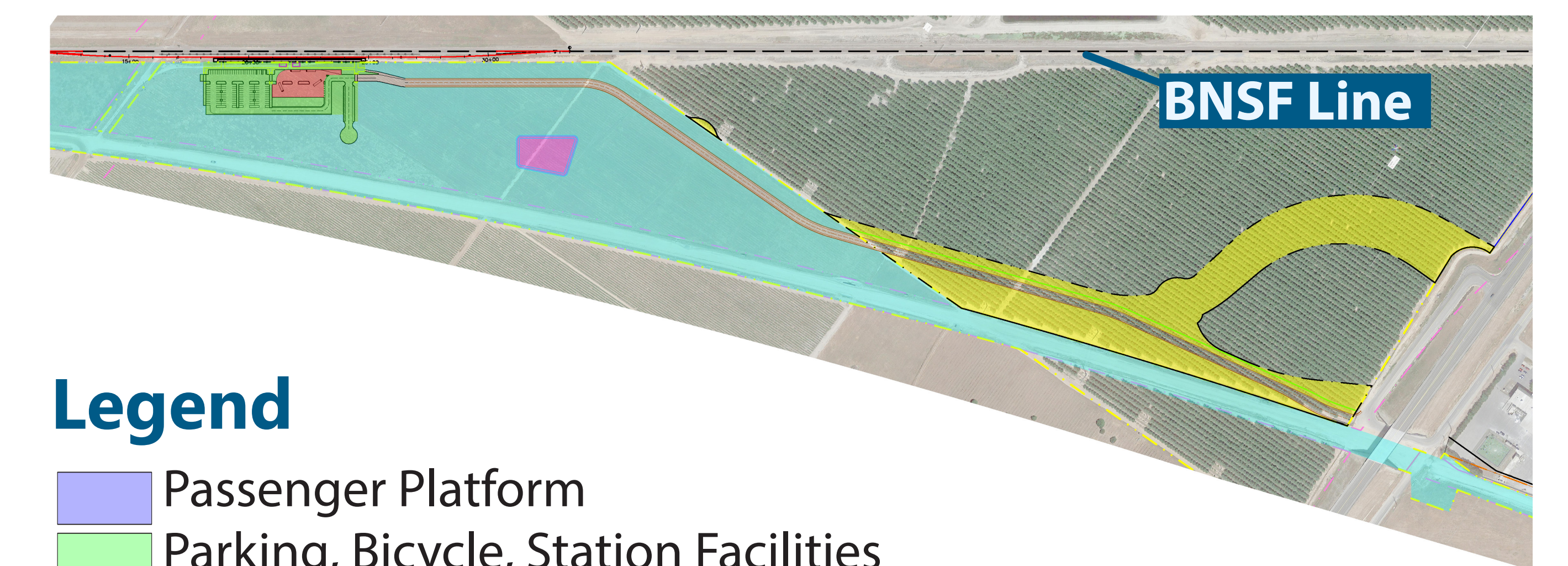
SJJPA has initiated the environmental review process. A draft Environmental Impact Report (EIR) for Phase 3 was released on April 14, 2025.

Who is the Lead Agency?

SJJPA manages the San Joaquins rail service and is the CEQA lead agency for this effort. SJJPA is working closely with the Madera County Transportation Commission, Madera County, City of Madera, the California State Transportation Agency (CalSTA), and the California High-Speed Rail Authority (CHSRA).

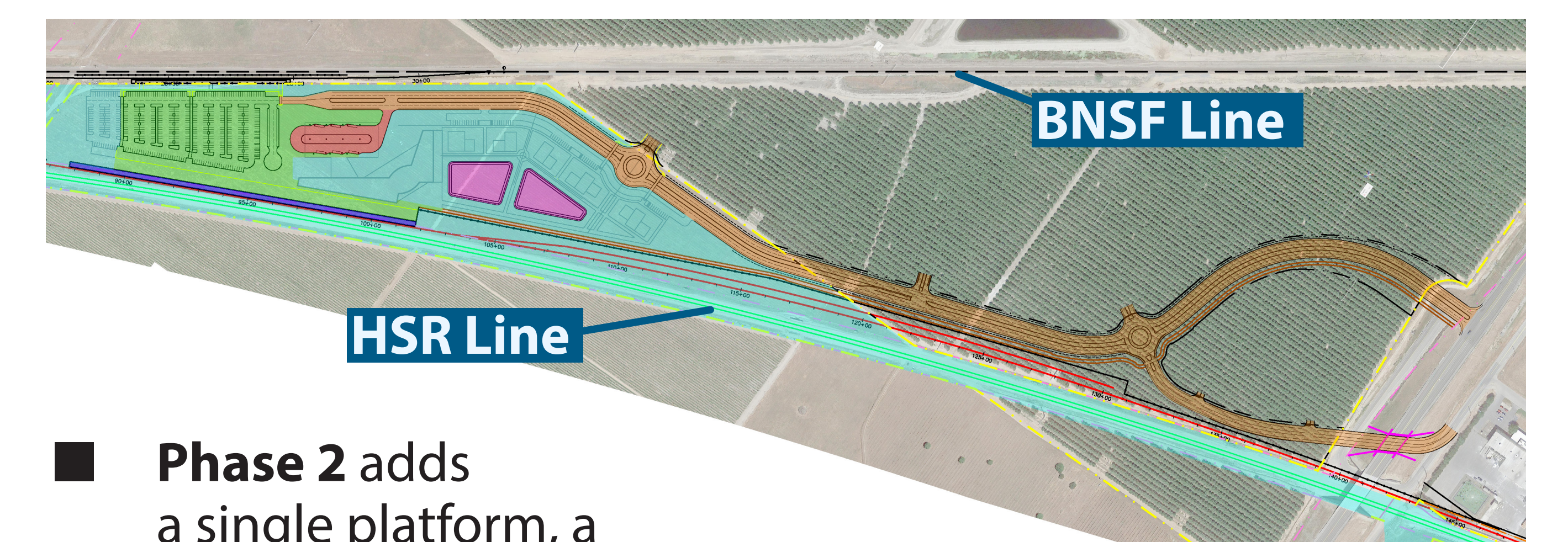
SJJPA completed environmental review for the California Environmental Quality Act (CEQA) for Phases 1 and 2. The Final Initial Study/Negative Mitigated Declaration (IS/MND) for those phases was approved by the SJJPA Board in January 2021.

- **Phase 1** for the Madera HSR Station project will relocate the existing San Joaquins station, currently in northern Madera County, to a site north of Avenue 12 where the future HSR station will be located. Final design is nearly complete and the required right-of-way has been secured. Construction is expected to begin in 2025.



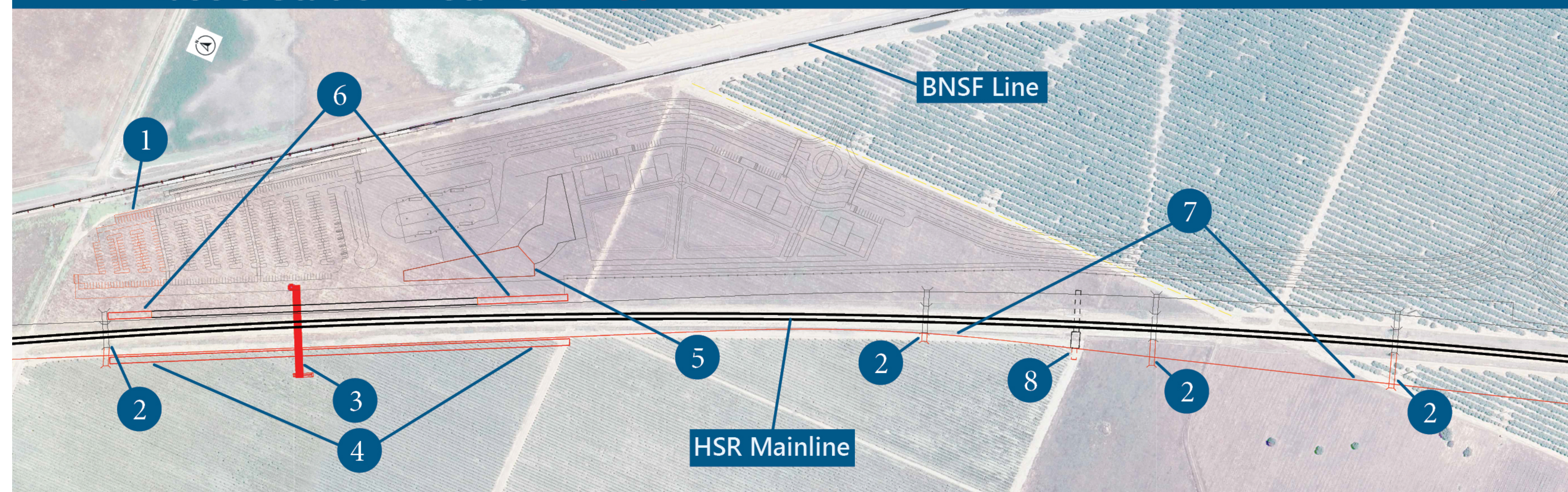
Legend

- Passenger Platform
- Parking, Bicycle, Station Facilities
- Land Secured for Phase 2
- Bus Depot
- Access Road and Bicycle Path
- Stormwater Retention Pond
- Publicly-Owned Land
- Existing Freight Track
- New Station Siding Track
- HSR Track (by others)
- Fence



- **Phase 2** adds a single platform, a stopping track, and access and station improvements on the east side of the HSR mainline, which will allow HSR trains to serve Madera Station as part of the EOS between Merced and Bakersfield. Once HSR is in service between Merced and Bakersfield, the San Joaquins service will be discontinued south of Merced. The improvements needed at the Madera HSR Station for initial service will be implemented in this phase. The Phase 2 station will provide Madera with direct HSR service, and transfers between HSR and the truncated San Joaquins service will be available at the Merced HSR Station.

Phase 3 Station Details in Red



1. Proposed Additional Parking
2. Existing Culvert (To Be Extended)
3. Proposed Overhead Pedestrian Bridge
4. Proposed Western Station Platform (20 ft. x 1,410 ft.)
5. Proposed Station Building/Canopy
6. Eastern Station Platform Extended to 1,410 ft. (Platform In Previous Phase 2 Was 1,000 ft.)
7. Proposed Western Station Siding Track
8. Existing Wildlife Crossing (To Be Extended)