

# What Is in the Draft EIR?

## What is an Environmental Impact Report?

**An Environmental Impact Report (EIR):**

- **Is required** by CEQA for projects that may have significant environmental impacts.
- **Identifies** potential physical environmental impacts of a project.
- **Informs** the public and public agency decision-makers prior to deciding whether to approve a project.
- **Recommends** ways to reduce significant environmental impacts.

**The Draft EIR analyzes impacts to the following resource areas:**

- Aesthetics
- Agricultural and Forestry Resources
- Air Quality and Greenhouse Gas Emissions
- Biological Resources
- Cultural Resources
- Tribal Cultural Resources
- Energy
- Geology, Soils, Seismicity, and Paleontological Resources
- Hazards and Hazardous Materials
- Hydrology and Water Quality
- Land Use and Planning
- Mineral Resources
- Noise and Vibration
- Population and Housing/ Growth-Inducing
- Public Services and Utilities and Service Systems
- Recreation
- Transportation
- Wildfire
- Cumulative

## Construction Impacts\*

Resource Area	No Impact	Less-than-Significant Impact	Less-than-Significant Impact with Mitigation	Significant and Unavoidable Impact
Aesthetics		●		
Agricultural Resources				●
Air Quality and Greenhouse Gas Emissions			●	
Biological Resources			●	
Cultural Resources			●	
Tribal Cultural Resources			●	
Energy		●		
Geology, Soils, Seismicity, and Paleontological Resources			●	
Hazards and Hazardous Materials			●	
Hydrology and Water Quality		●		
Land Use and Planning		●		
Mineral Resources		●		
Noise and Vibration		●		
Population and Housing		●		
Public Services and Utilities and Service Systems		●		
Recreation	●			
Safety and Security				
Transportation			●	
Wildfire		●		
Cumulative		●		

\* All operational impacts would be less than significant



# Agricultural Resource Impacts

Construction of the Project would require temporary and permanent use of agricultural land. Even with implementation of Mitigation Measure AG-1: Restore Important Farmlands and Mitigation Measure AG-2: Conserve Important Farmlands, the impact of conversion of Important Farmland to non-agricultural use could be a significant and unavoidable impact during construction of the Project.

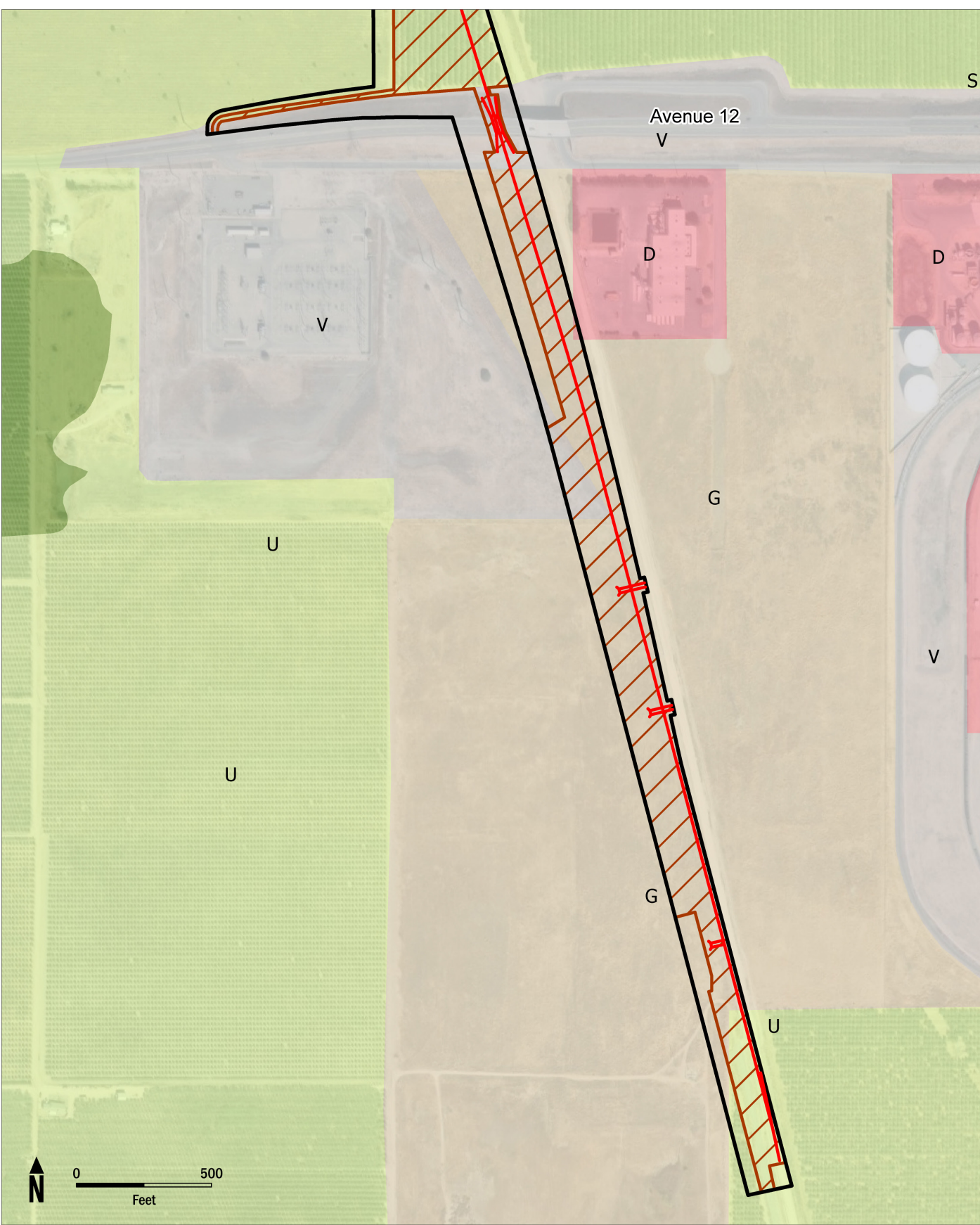
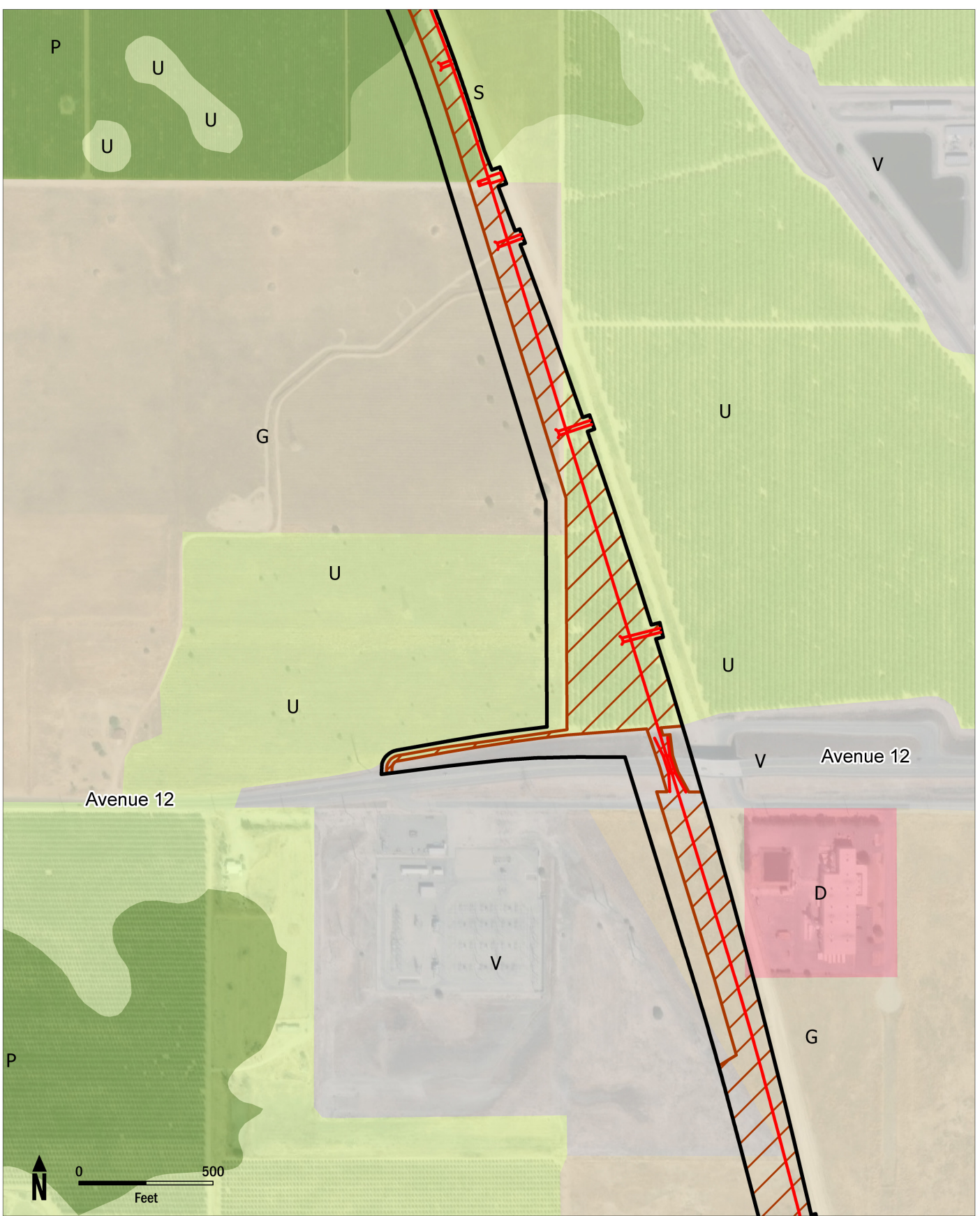
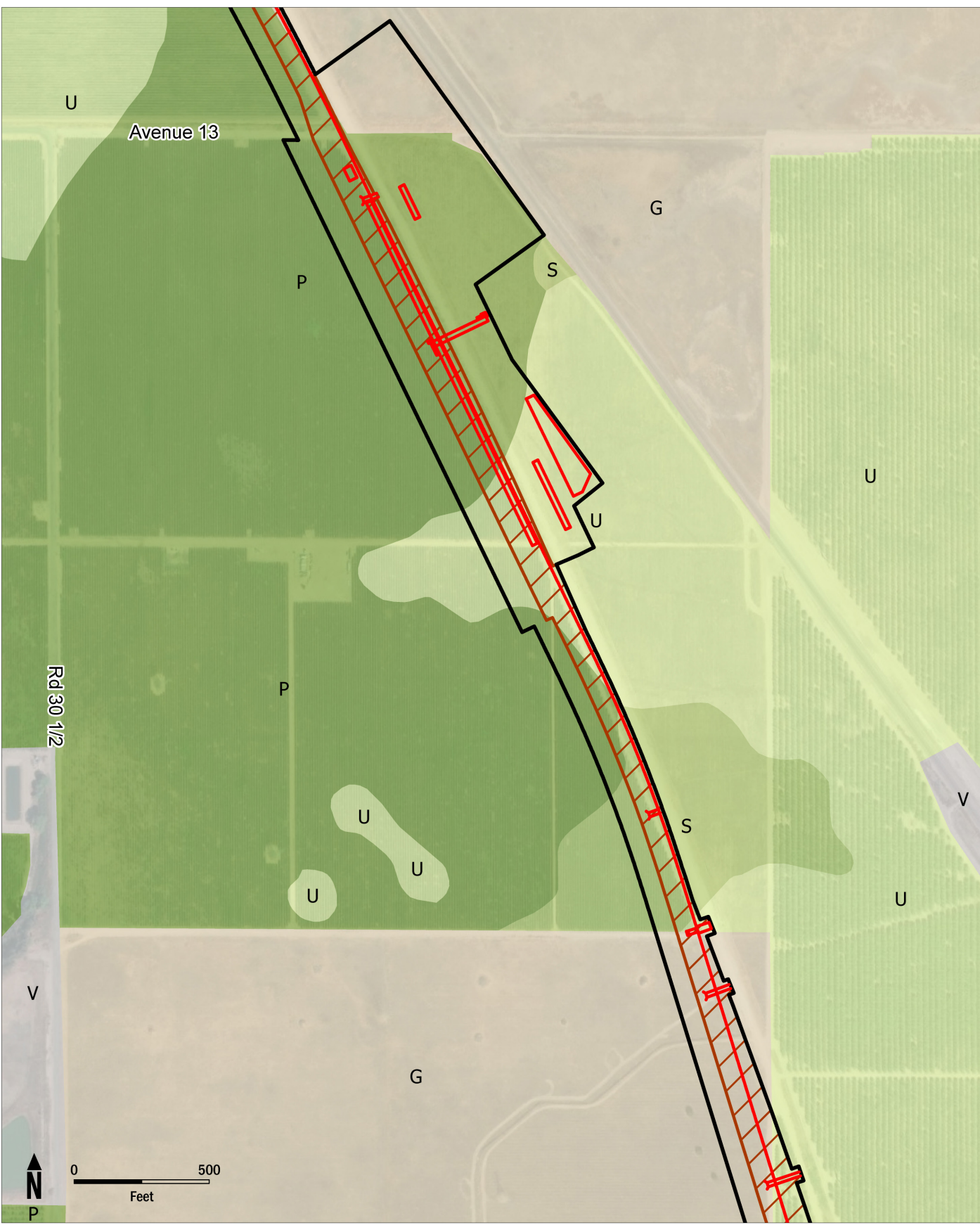
## Mitigation measures would incorporate the following:

### MM AG-1

- Prepare a restoration plan for temporary impacts.
- Remove and stockpile top 18 inches of soil for replacement onsite.
- Plan will include time-stamped photograph of pre-construction conditions.
- Staging areas will be returned to condition equal to pre-construction staging condition.

### MM AG-2

- SJJPA enter agreement with DOC and its California Farmland Conservancy Program.
- Fund purchase of agricultural easements from willing sellers.



**Legend**  
Project Location  
Project Components  
Permanent Impact

Impact AG-1	Level of Impact	Mitigation Measures	Level of Impact After Mitigation
Construction of the Project could convert Prime Farmland, Unique Farm-land, or Farm-land of Statewide Im-portance (Farm-land) to non-agricultural use.	Potentially significant impact	<b>AG-1:</b> Restore Important Farmlands <b>AG-2:</b> Conserve Important Farmlands	Significant and unavoidable impact

