



San Joaquin

Joint Powers Authority

MADERA STATION SCOPING MEETING – DECEMBER 13, 2023



SCOPING MEETING PURPOSE

The purpose of this meeting is to:

- Inform you that the CEQA lead agency, the San Joaquin Joint Powers Authority (SJJPA), is evaluating the Phase 3 Project under the California Environmental Quality Act (CEQA)
- Solicit public comment regarding the type and extent of environmental analyses to be done for the Phase 3 Project

In addition, at a later time, the Project will comply with the requirements of the National Environmental Policy Act (NEPA).





OPENING REMARKS

- While the 171-mile Merced-Bakersfield line is already under construction, the California High Speed Rail Authority is also planning the connection from Gilroy to Central Valley, through the Pacheco Pass.
- Madera HSR Station will need to be expanded to allow higher frequency service and non-stop express service to meet future needs.





OPENING REMARKS

- Phase 1: Existing SJ station relocation
- Phase 2: Needed for initial HSR service frequency (18 round trips per day) between Merced and Bakersfield
- Phase 3: Project is needed when HSR expands service to the Bay Area



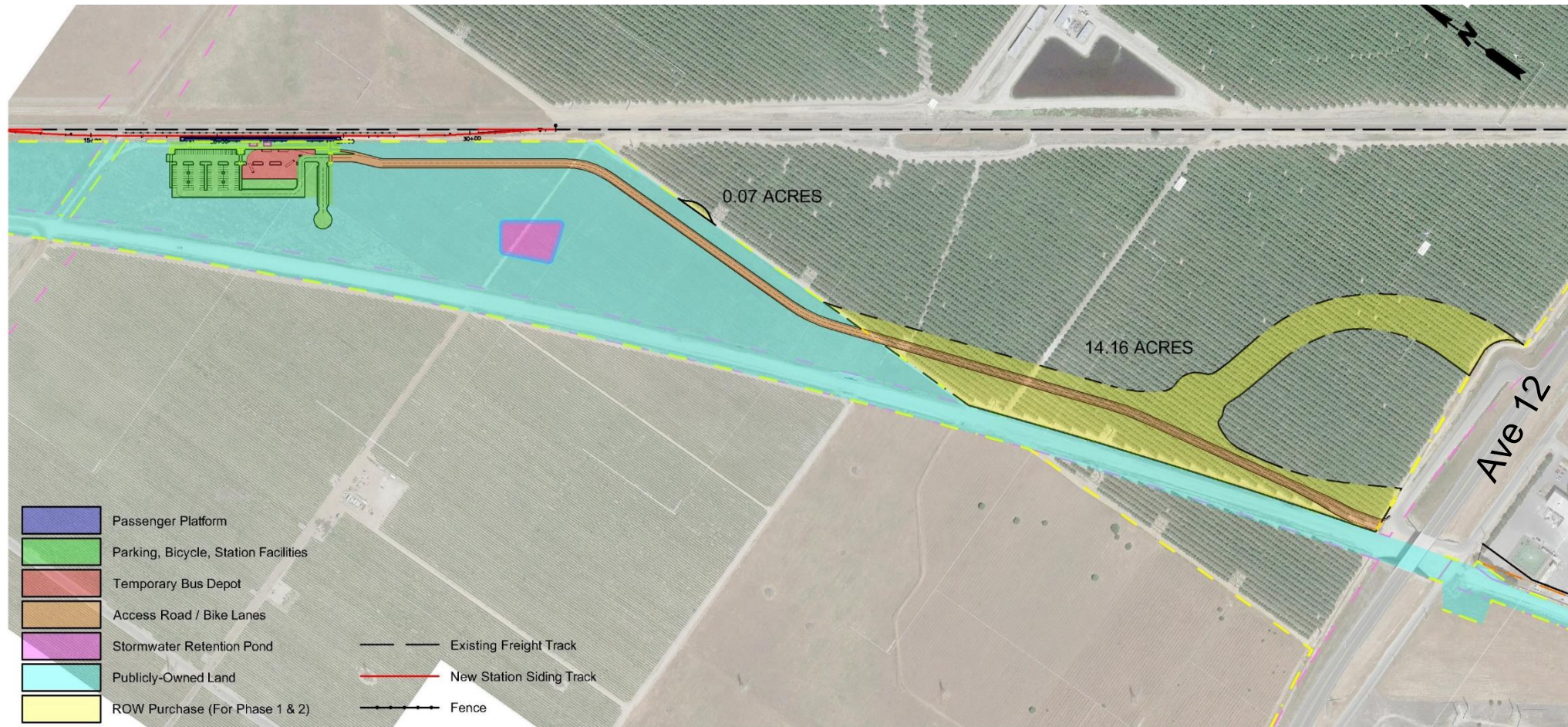


AGENDA

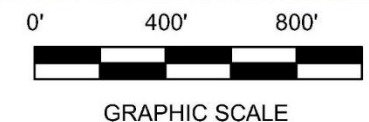
- Building on Phases 1 & 2
- Phase 3 Project Area
- Phase 3 Project Elements
- Goals and Objectives
- Environmental Review Process
- Potential Environmental Impacts
- Q&A



PHASE 1 – Relocated Station

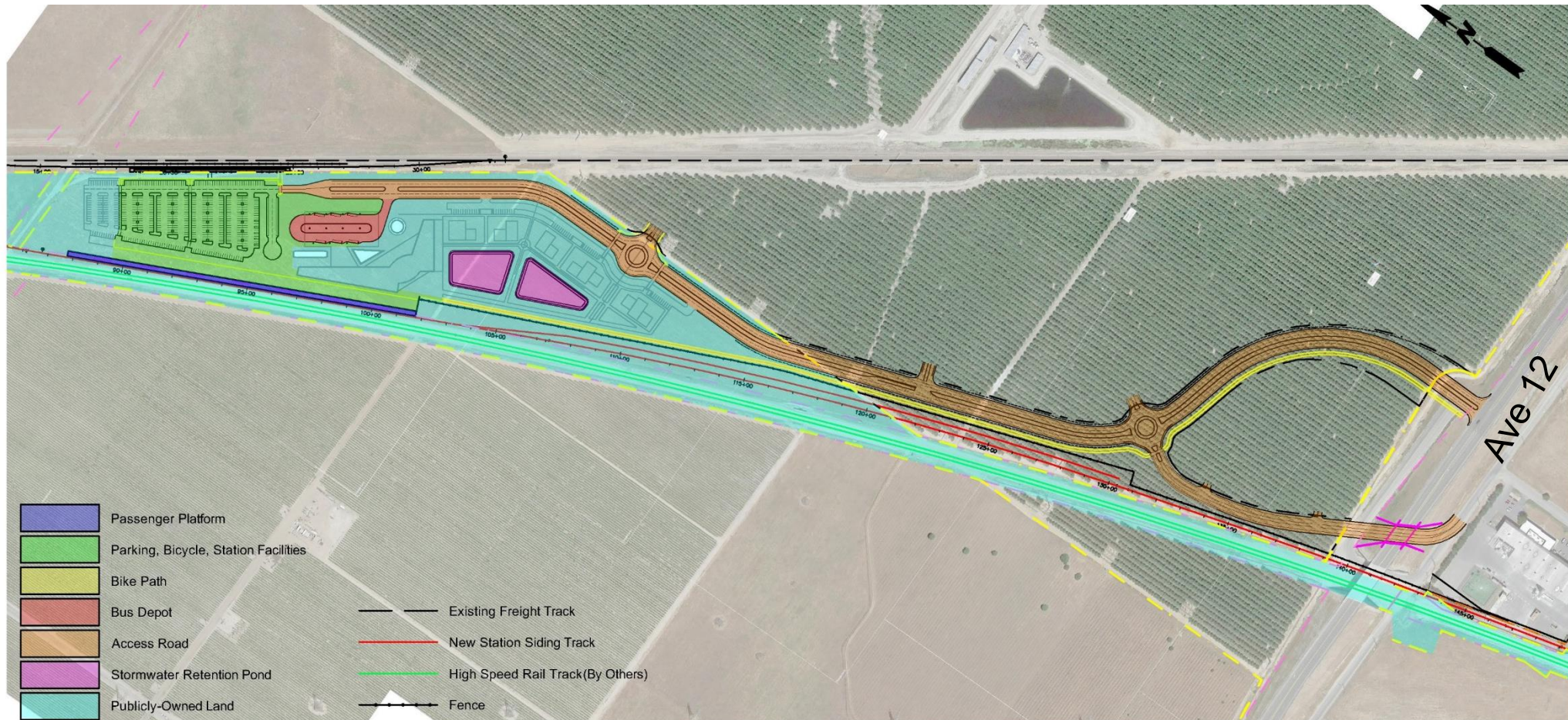


Parking Spaces - 102 spaces
Bus Stops - 2 spaces
Kiss and Ride - 150 lf

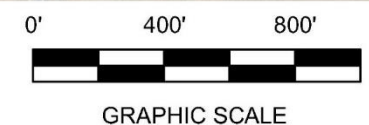




PHASE 2 – HSR Early Operating Segment

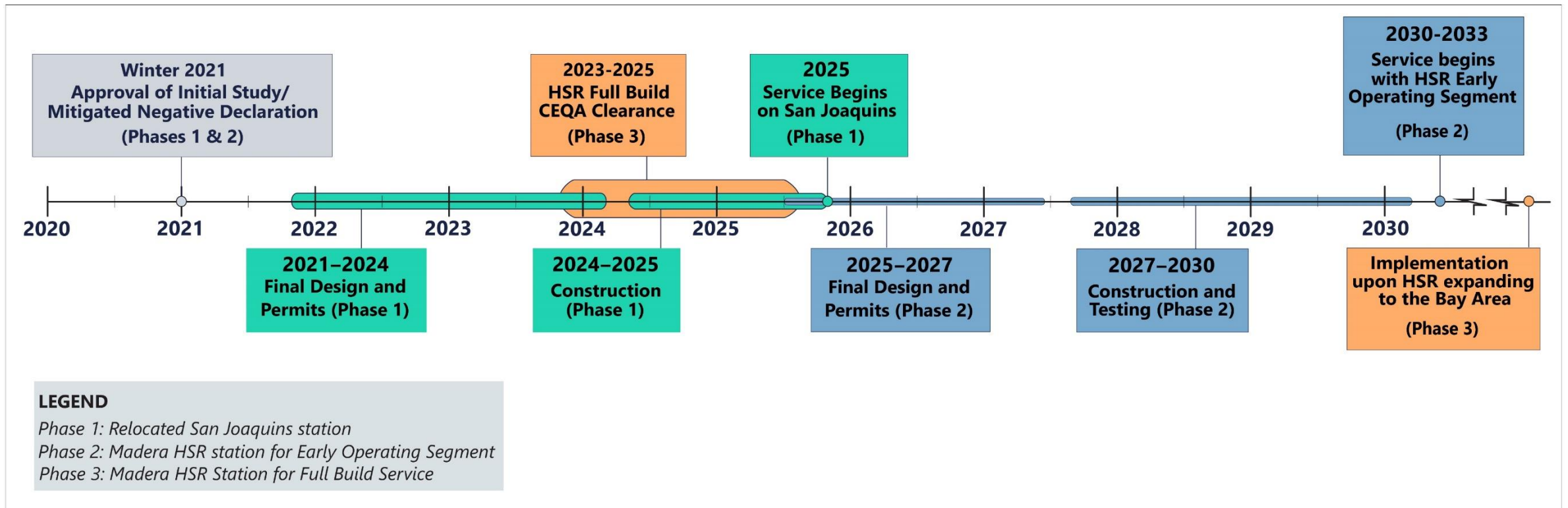


Parking Spaces - 400 spaces
Bus Stops - 6 spaces
Kiss and Ride - 300 lf
Future Building Footprint - 48,000 sf





BUILDING ON PHASES 1 AND 2





PHASE 3 – LOCATION



LEGEND:

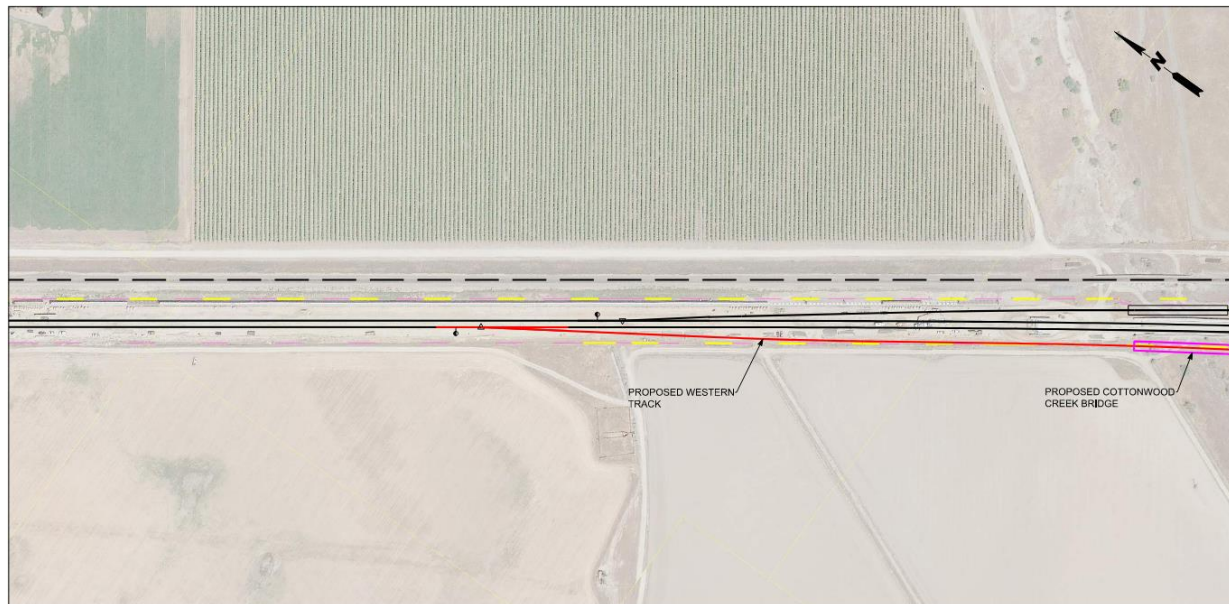
- PROPOSED MCC BUILD-OUT LIMITS
- ALTERNATIVE ROAD IMPROVEMENTS
- PUBLICLY OWNED LAND RIGHT OF WAY

NOTES:

1. OVERHEAD PEDESTRIAN WALKWAY PROVIDING ACCESS FROM MAIN PARKING LOT TO NEW NORTHBOUND TRAIN PLATFORM



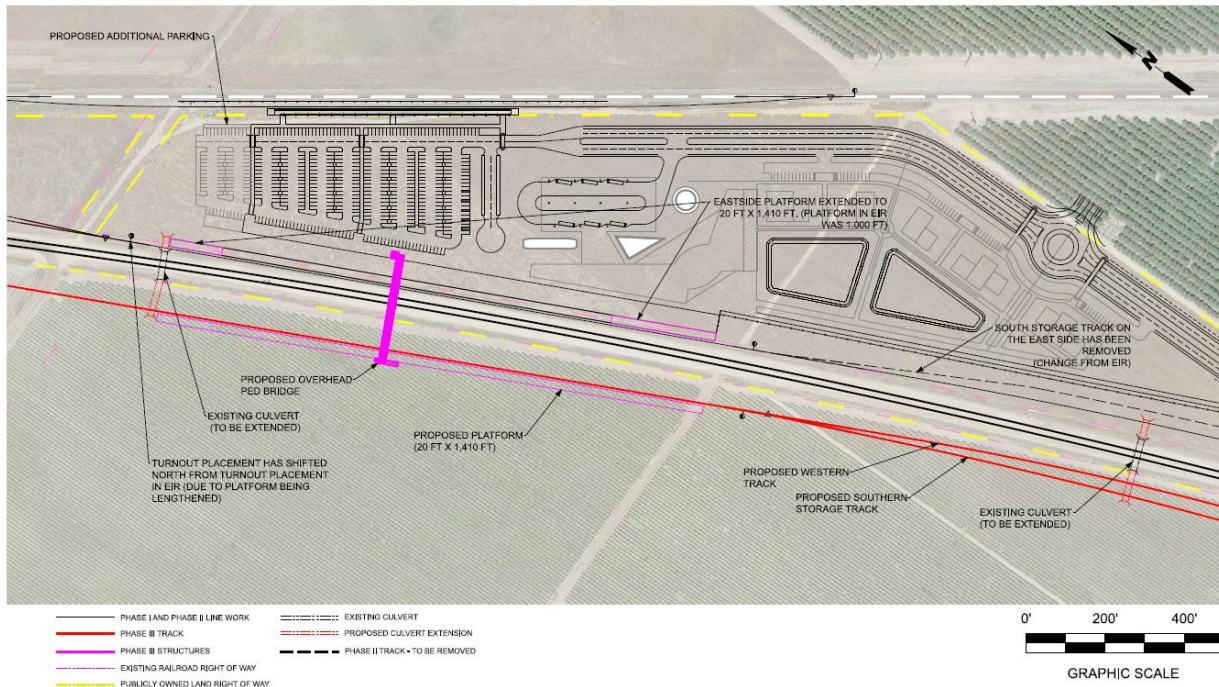
PHASE 3 – HSR FULL BUILD



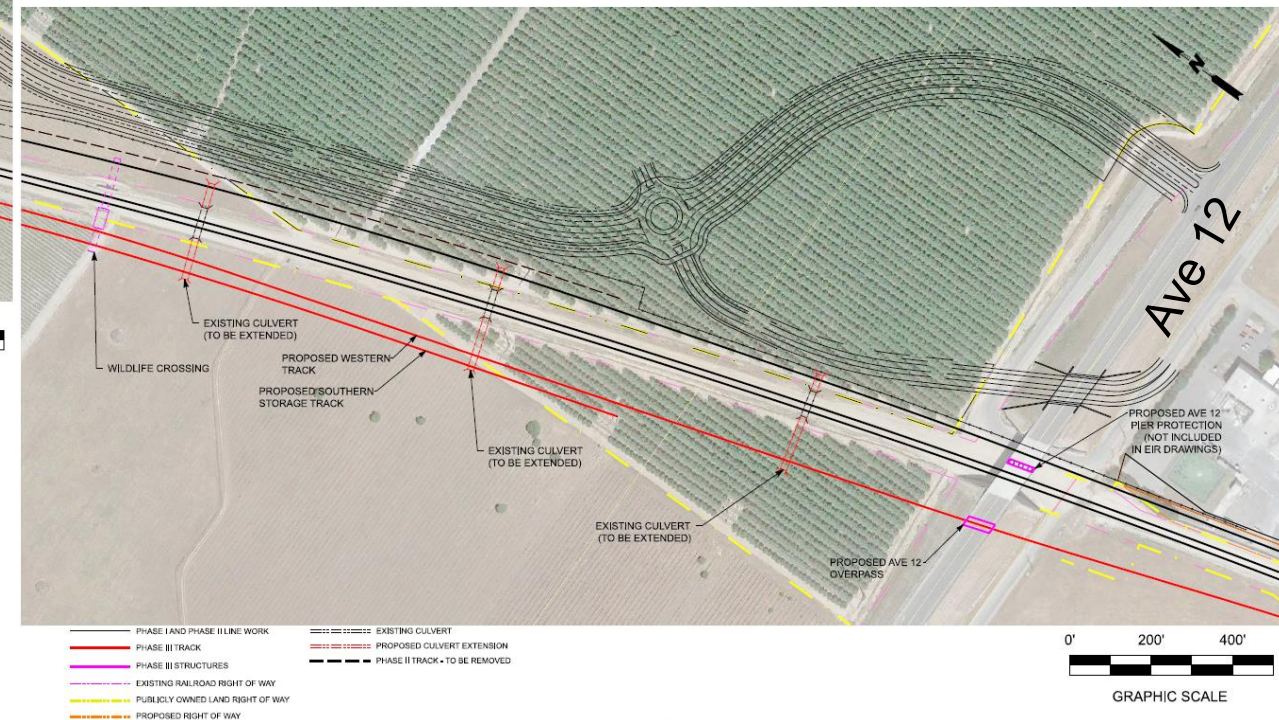
- Approximately 16,600 TF of new track
- 410' platform extension for eastside platform
- 1,410' new westside platform
- 1 new pedestrian bridge
- 1 new roadway bridge at Ave 12
- 1 new railroad bridge at Cottonwood Creek
- 5 culvert extensions
- 2 new wildlife crossings



PHASE 3 – HSR FULL BUILD



- Approximately 16,600 TF of new track
- 410' platform extension for eastside platform
- 1,410' new westside platform
- 1 new pedestrian bridge
- 1 new roadway bridge at Ave 12
- 1 new railroad bridge at Cottonwood Creek
- 5 culvert extensions
- 2 new wildlife crossings





PHASE 3 – HSR FULL BUILD



- Approximately 16,600 TF of new track
- 410' platform extension for eastside platform
- 1,410' new westside platform
- 1 new pedestrian bridge
- 1 new roadway bridge at Ave 12
- 1 new railroad bridge at Cottonwood Creek
- 5 culvert extensions
- 2 new wildlife crossings



ENVIRONMENTAL REVIEW PROCESS

SJJPA will prepare an Environmental Impact Report (EIR) consistent with CEQA.
The Draft EIR will:

Identify Potential Impacts

Provide opportunity for public review and comment



Analyze potential environmental effects and identify ways to avoid or mitigate them



Identify significant environmental impacts (if any)



Propose Potential Mitigations

Evaluate reasonable alternatives that could avoid or reduce environmental impacts



Develop detailed mitigation (ways to reduce or avoid environmental impacts) if needed



Disclose to decision makers the impacts, mitigation, and public comments



GOALS AND OBJECTIVES

Goals and Objectives:

- Connectivity Options for Residents of Madera County
- Climate Change, Resiliency, and the Environment
- Equity and Quality of Life
- Economic Impacts and Job Creation
- Safety



POTENTIAL ENVIRONMENTAL IMPACTS

SJPA has initially determined that the following topics will be included for evaluation in the EIR, consistent with the CEQA Environmental Checklist Form ([link](#)):

- ☐ Aesthetics
- ☐ Agricultural and Forestry Resources
- ☐ Air Quality
- ☐ Biological Resources
- ☐ Cultural Resources
- ☐ Energy
- ☐ Geology, Soils, and Paleontological Resources
- ☐ Greenhouse Gas Emissions
- ☐ Hazards and Hazardous Materials
- ☐ Hydrology and Water Quality
- ☐ Land Use and Planning
- ☐ Mineral Resources
- ☐ Noise
- ☐ Population and Housing
- ☐ Public Services
- ☐ Recreation
- ☐ Transportation
- ☐ Tribal Cultural Resources
- ☐ Utilities and Service Systems
- ☐ Wildfire



POTENTIAL ENVIRONMENTAL IMPACTS

Considerations:

- The EIR will consider both temporary construction-period and permanent (operational) impacts.

- The EIR will also include a cumulative impact analysis of the potential impacts in combination with other planned projects along the Project corridor.



WHAT'S NEXT?

- ❑ Scoping Comment period closes at 5:00pm on January 5th.
- ❑ Environmental impact analysis begins, incorporating scoping comments received.
- ❑ Draft EIR released for public review – Winter 2024.
- ❑ Public comments received on the Draft EIR.
- ❑ Final EIR certified – Summer 2025.



SCOPING COMMENTS

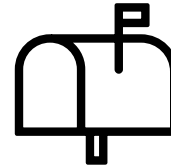
You can submit Scoping Comments through 5:00 pm on Friday, January 5, 2024.



BY EMAIL

info@maderastation.com

Include “Madera HSR
Phase 3 Project” in the
subject line



BY MAIL

San Joaquin Joint Powers Authority
Attn: Madera HSR Station Full Build Project
(Phase 3)
949 East Channel Street
Stockton, CA 95202